

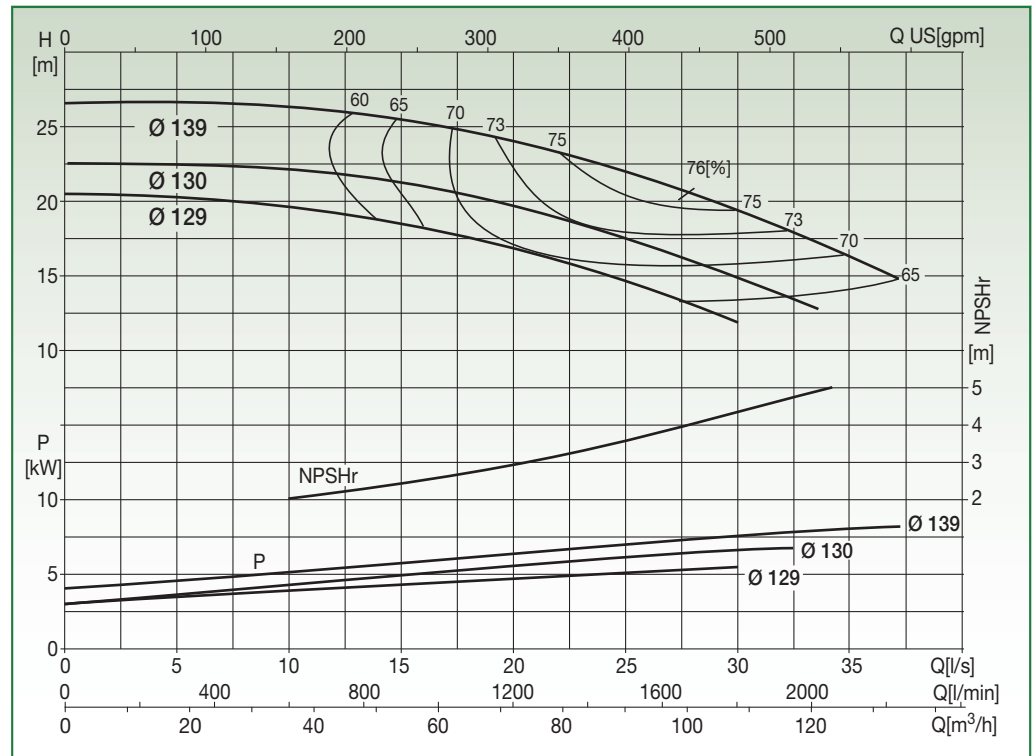
N2SG 65-13

EN 733 STANDARD PUMP 2900 rpm



Liquid temp.: -10°C +120°C
Max. ambient temp.: +40°C

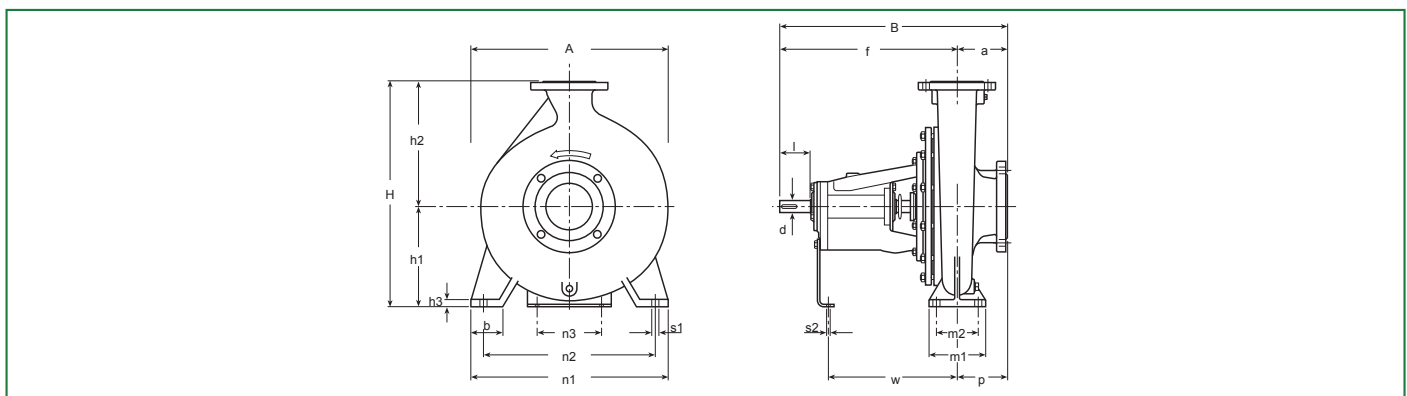
Special versions on request



Test to UNI EN ISO 9906 level 2 - Test liquid: water ($\rho = 1000 \text{ kg/m}^3$, kinematic viscosity $\nu = 1 \text{ mm}^2/\text{s}$)
Tolerance on performance curves to UNI EN ISO 9906 Annex A

PERFORMANCE DATA

Code	Type	Motor P2 Rated		Capacity										
		[kW]	[HP]	l/s	0	5	10	15	20	25	30	33	35	37
				m³/h	0	18	36	54	72	90	108	63	126	133,2
10037993	N2SG 65-13.129	5,5	7,5	H [m]	20,4	20,2	19,6	18,5	16,8	14,6	11,8			
10037994	N2SG 65-13.130	7,5	10		22,5	22,4	22,1	21,2	19,6	17,5	14,8	13,1		
10037995	N2SG 65-13.139	9	12,5		26,5	26,6	26,3	25,4	24	22	19,4	17,8	16,2	14,8



DIMENSIONAL DATA

Type	DNA	DNM	Pump													Shaft		Key	Weight [kg]	A [mm]	B [mm]	H [mm]	Area [m²]	Vol. [m³]		
			a	f	h ₁	h ₂	b	m ₁	m ₂	n ₁	n ₂	n ₃	h ₃	s ₁	s ₂	w	p								d	l
N2SG 65-13	80	65	100	360	160	180	65	125	95	280	212	110	14	14	14	267	100	24	50	8x7	39	280	460	340	0,13	0,04