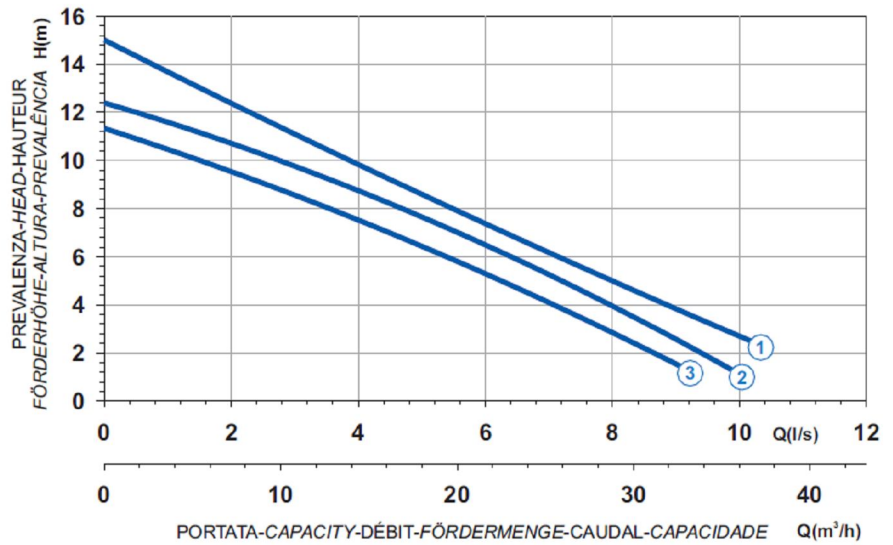





	Ghisa EN-GJL-250		Cast Iron EN-GJL-250
	Fonte EN-GJL-250		Grauguss EN-GJL-250
	Hierro fundido EN-GJL-250		Ferro fundido EN-GJL-250

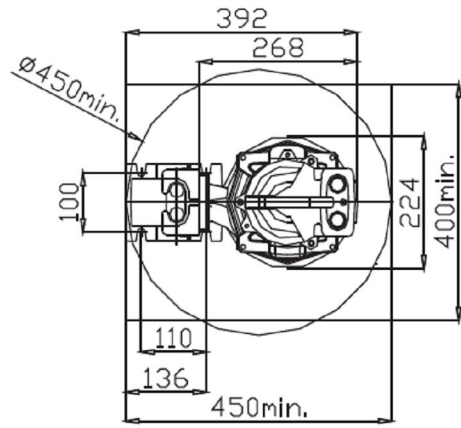
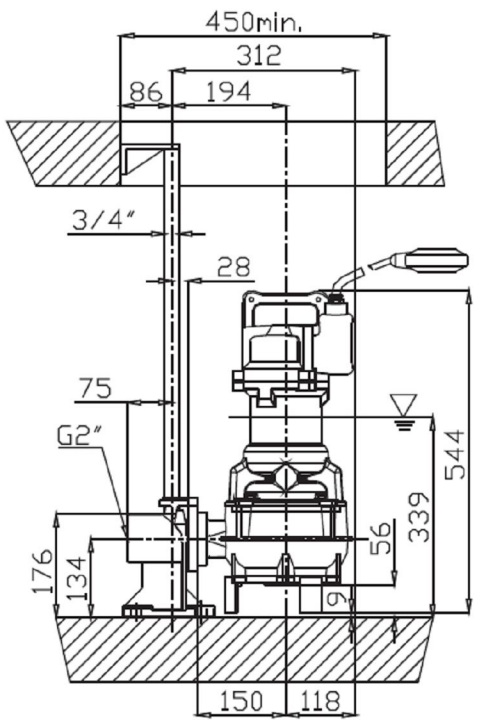
Curva caratteristica - Performance curve - Courbe caractéristique
Kennlinie - Curva característica - Curva característica



Power supply	1ph 230V 50Hz
R.P.M.	2850
Free passage (mm)	50
Discharge (mm)	DN 50
Weight (Kg)	43

Curve N°	Code	Type	MOTOR			ATEX code 
			Nominal power P2 (kW)	Nominal current I (A)	Starting current Is (A)	
1	7005432	G271M3V1-K50AB1	1,8	10	35	7005618
2	7006436	G271M3V2-K50AB1	1,8	10	35	7006438
3	7006437	G271M3V3-K50AB1	1,1	7,5	21	7006443

Dimensioni - Dimensions - Dimensions - Abmessungen - Dimensiones - Dimensões (mm)



▽ LIVELLO MINIMO DI SOMMERGIBILITÀ
MINIMUM SUBMERSIBLE LEVEL
NIVEAU MINIMUM D'IMMERSION
MINDESTWASSERSTAND
NIVEL SUMERGIBLE MÍNIMO
NIVEL MÍNIMO DE SUBMERGIBILIDADE

