

Descrizione - Description	Unità di misura - Unit of measurement	Grandezze - Size																
		32-16	50-16	32-20	50-20	65-20	80-20	80-20S	50-25	80-25	100-25	125-25	80-31	125-31	150-31	150-35	200-35	250-35
Grandezza supporto - Bearing size		25			35						50			65				
Corpo - Casing																		
Spessore corpo - Casing thickness	mm	6,5	7	7	7	7,5	7,5	7,5	7	7,5	12	12	11	12	12,5	13	14,5	15
Prese di pressione - Pressure gauge holes		G.1/4 ^(b)			G.1/4 ^(b)						G.1/2 ^(b)			G.1/2				
Foro drenaggio - Casing drain		G.1/4 ^(b)			G.3/8 ^(b)				G.1/2 ^(b)				G.1/2 ^(b)			G.1/2	G.3/4	G.1
Girante - Impeller																		
Passaggio sferico RC - Max. sphere RC	mm	20	40	20	40	55	70	50	45	70	95	115	60	95	120	110	125	150
Dia ingresso - Inlet diameter	mm	50	65	50	65	80	100	100	65	100	125	125	100	150	200	200	250	300
Dia massimo - Max. diameter	mm	169	169	209	209	209	209	209	259	259	259	259	319	319	310	349	349	349
Dia minimo - Min. diameter	mm	125	125	160	160	160	160	160	200	200	200	200	260	260	260	320	320	320
Momento di inerzia J ^(a) - Moment of inertia J ^(a)	kgm ²	5,6	5,6	19,4	19,4	19,4	19,4	38	35,4	59,9	59,9	59,9	163	218	320	378	378	378
Cassa stoppa - Seal chamber																		
Diametro - Diameter	mm	55			68						80			100				
Profondità - Depth	mm	71			79						92			110				
Dia camicia - Dia. shaft sleeve	mm	33			43						53			70				
Sezione baderna - Section packing	mm	10			12						12			15				
N.° anelli baderna con anello idraulico Packing ring with lantern ring		4			4						4			4				
N.° anelli baderna senza anello idraulico Packing ring without lantern ring		6			6						6			6				
Diam. Tenuta meccanica - Dia. mechanical seal	mm	33			43						53			70				
Ingresso anello idraulico - Lantern ring holes		G.1/4			G.1/4						G.1/4			G.1/4				
Ingresso Ten. Mecc. - Connections mech. seal		G.1/4			G.1/4						G.1/4			G.1/4				
Camera di raffreddamento - Cooling jacket																		
Pressione max - Max. pressure	bar	3			3						3			3				
Pressione di prova - Max. hydrostatic pressure	bar	4,5			4,5						4,5			4,5				
Connessioni - Connections holes		G.1/4			G.3/8						G.3/8			G.3/8				
Albero - Shaft																		
Dia sotto la camicia - Shaft dia. under sleeve	mm	25			35						45			60				
Dia sotto la girante - Shaft dia. under impeller	mm	20			28						38			48				
Supporto - Bearing housing																		
Valore max. P/n - Max. value P/n		0,008			0,022						0,045			0,1				
Potenza max. - Max. power to 960 1/min.	kW	7,7			21						43			96				
Potenza max. - Max. power to 1450 1/min.	kW	11,5			32						65			145				
Potenza max. - Max. power to 2900 1/min.	kW	23			64						130			-				
Supportazione standard - Standard bearings																		
Lato pompa - Pump side		6305			6307						6310			6313				
Lato motore - Motor side		6305			3307						3310			3313				
Supportazione pesante 1 - HD1 bearings																		
Lato pompa - Pump side		6305			NJ 307						NJ 310			NJ 313				
Lato motore - Motor side		3305			2x7307						2x7310			2x7313				
Supportazione pesante 2 - HD2 bearings																		
Lato pompa - Pump side		NJ 305			-						-			-				
Lato motore - Motor side		2x7305			-						-			-				

I dati indicati non sono impegnativi e possono cambiare con le condizioni di lavoro
Technical data are indicative and they can change according to pump work

^(a) Dividi per 1000 per ottenere il momento di inerzia J in kgm²
Divide by 1000 to obtain the moment of inertia J in kgm²

^(b) A richiesta
On request

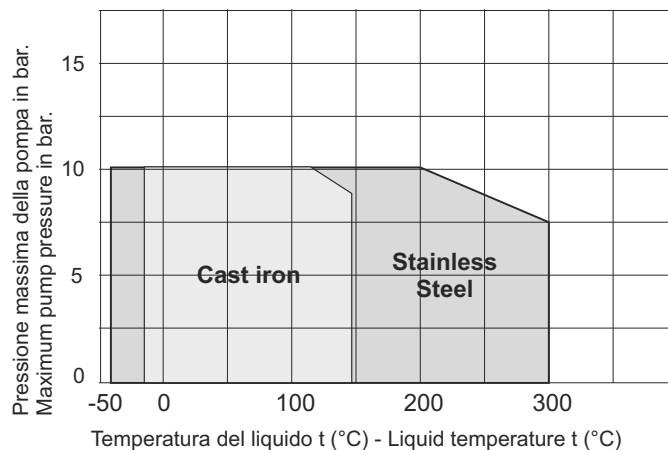
Limiti di pressione e di temperatura

Pompe in ghisa: impiego per tutti i liquidi, ad eccezione di acqua calda e liquidi diatermici organici.

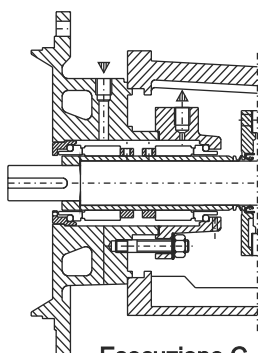
Pressure and temperature limits

Cast iron pumps: suitable for every kind of liquids, except for hot water and organic heat-transfer oils.

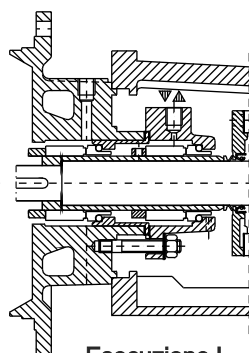
Materiali di costruzione : Construction Materials :



Materiali a richiesta : Sanicro, SAF, CF3M, Hastelloy
Materials on request : Sanicro, SAF, CF3M, Hastelloy



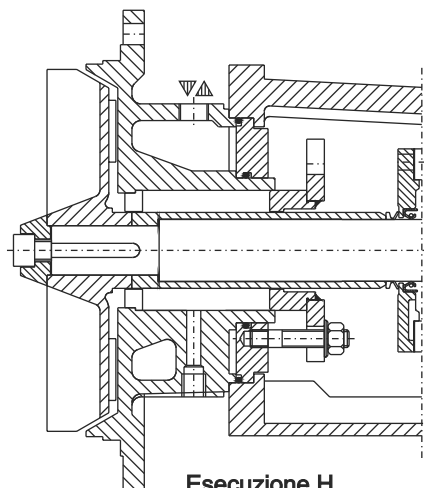
Esecuzione C
C Execution



Esecuzione L
L Execution

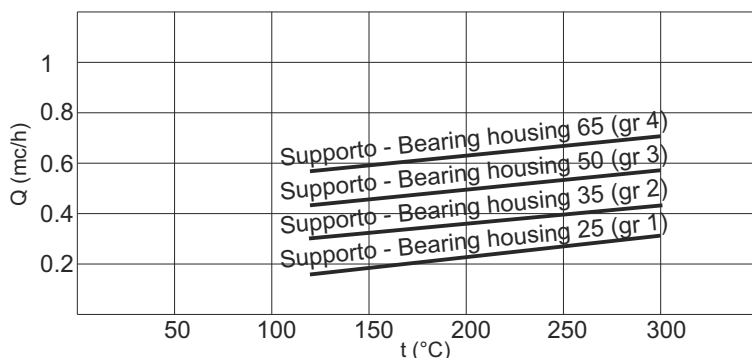
Flussaggio tenuta meccanica doppia esecuzione C - L
Double mechanical seal flushing C - L exec.

Supporto Bearing [mm]	Dia. ten. mecc. Mech. seal dia. [mm]	Portata flussaggio Flushing capacity [l/min].		P di flussaggio Flushing pressure [bar]	
		2900 rpm	1450 rpm	C	L
25	33	1,4	0,7	0.5 > p mandata 0.5 > discharge p	< 0.3
35	43	2	1		
50	53	3	1,5		
65	70	4	2		



Esecuzione H
H Execution

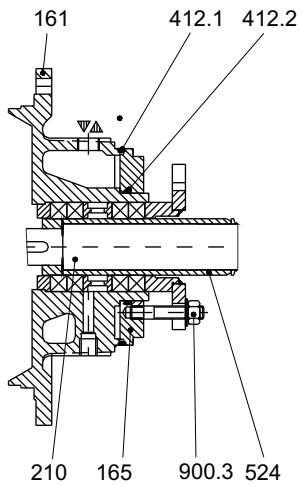
Flussaggio camera di raffreddamento esecuzione H
Cooling chamber flushing H execution



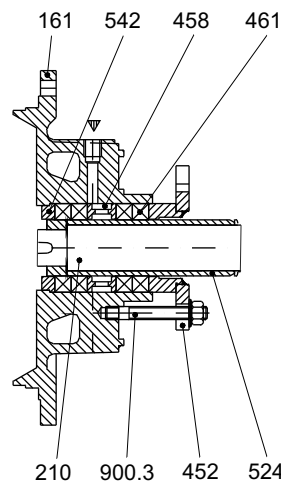
Dispositivi di raffreddamento (o riscaldamento) e di tenuta

Cooling (or heating) and sealing device

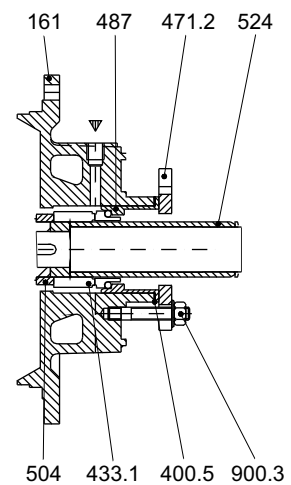
Camera Raffreddamento/Riscaldamento
Cooling/Heating jacket
"H" exec.



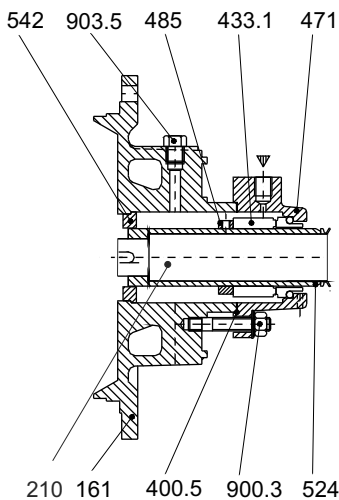
Tenuta baderna/Tenuta baderna flussata
Packing gland/Flushed packing gland
"B" and "S" exec.



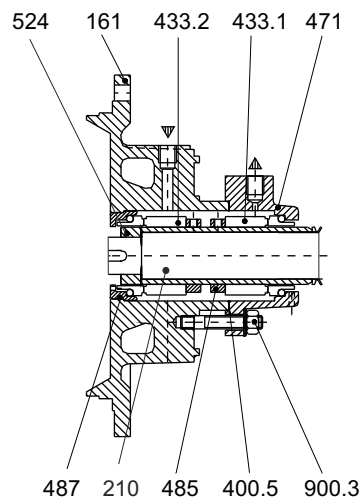
Tenuta meccanica singola
Single mechanical seal
"M" exec. API PLAN 02



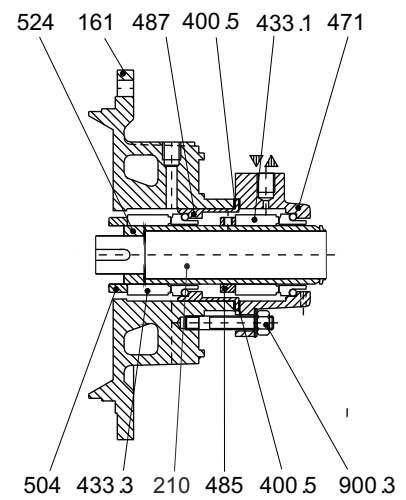
Singola con bussola di fondo
Single with throttle bushing
"A" exec. API PLAN 11/32



Tenuta meccanica doppia contrapposta
Double back to back mechanical seal
"C" exec. API PLAN 53/54

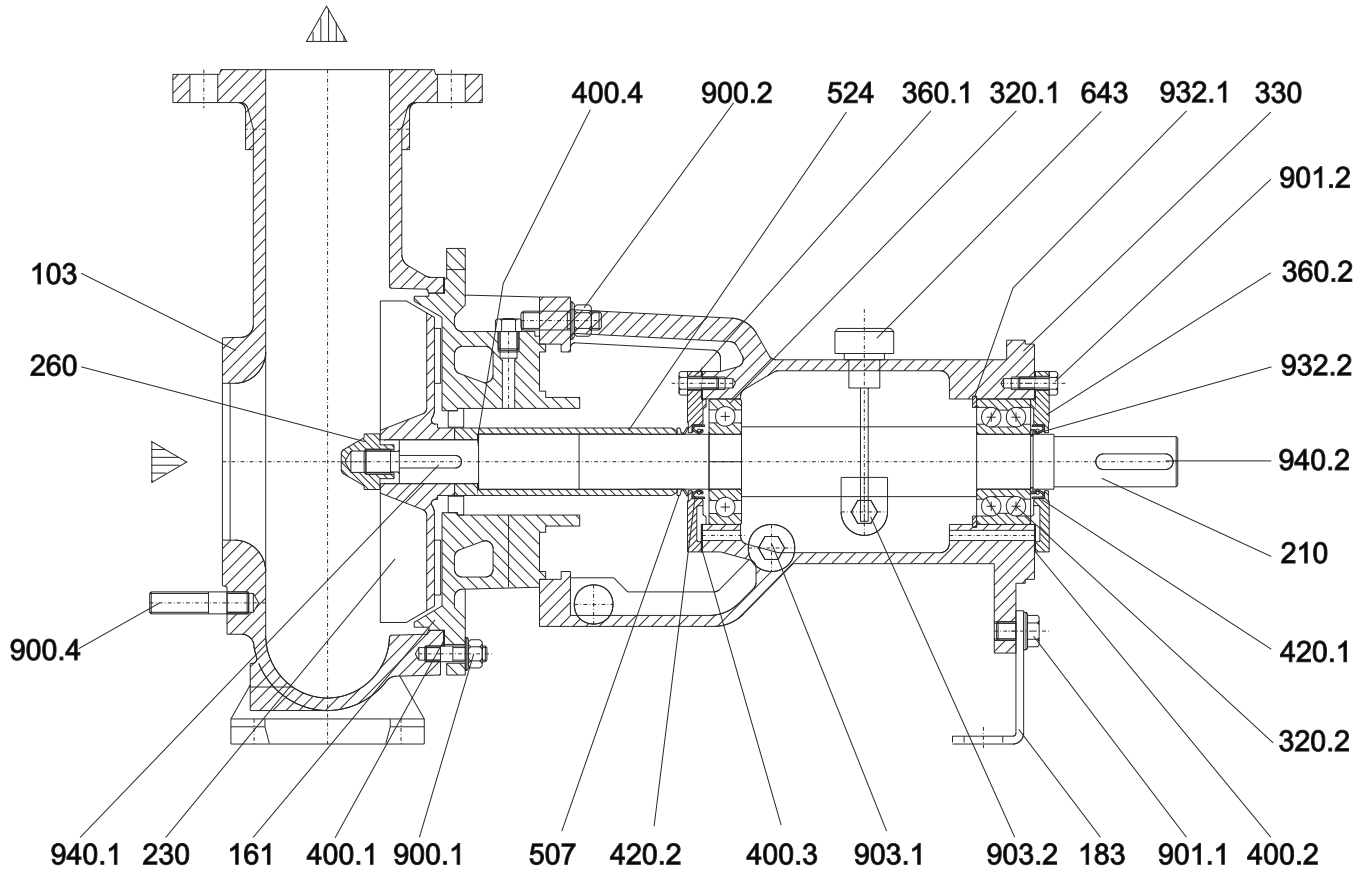


Tenuta meccanica doppia in tandem
Double tandem mechanical seal
"L" exec. API PLAN 52



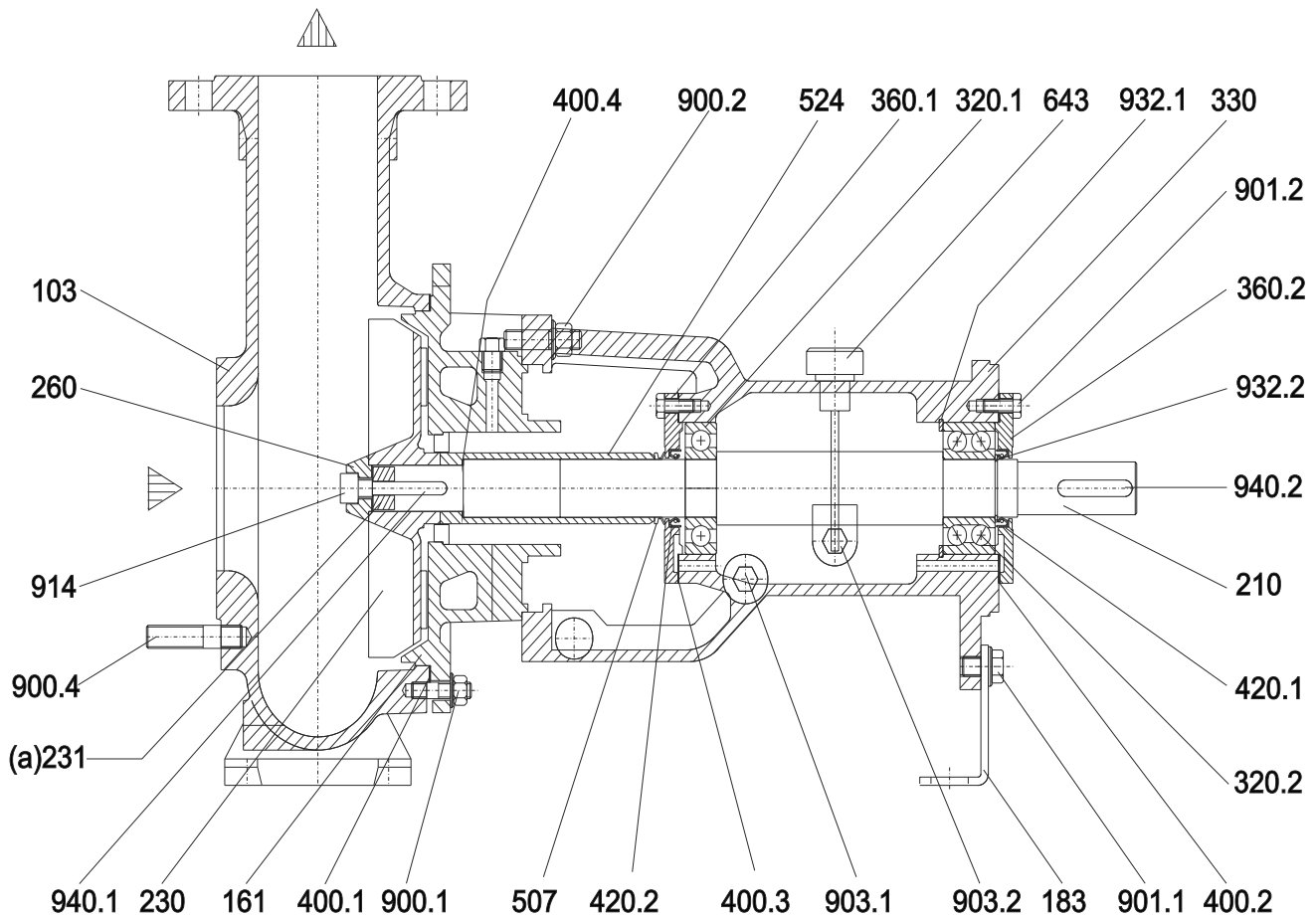
N.	DESCRIZIONE	DESCRIPTION
161	Coperchio del corpo	Casing cover
165	Coperchio camera di raffreddamento	Cooling chamber cover
210	Albero	Shaft
400.5	Guarnizione piana	Seal plate gasket
412.1	O-ring	O-ring
412.2	O-ring	O-ring
433.1	Tenuta meccanica l.c.	Mechanical seal D.S.
433.2	Tenuta meccanica l.o.c.	Mechanical seal N.D.S.
433.3	Tenuta meccanica l.o.c.	Mechanical seal N.D.S.
452	Premitreccia	Packing gland
458	Anello idraulico(solo per exec. S)	Lantern ring(only for exec. S)
461	Baderna	Packing ring
471	Coperchio tenuta meccanica	Seal chamber cover
471.2	Coperchio tenuta meccanica	Seal chamber cover
485	Anello arresto tenuta meccanica	Abutmen ring
487	Anello sede tenuta meccanica	Seal seat ring
504	Distanziale	Spacer
524	Camicia albero	Shaft sleeve
542	Bussola di fondo	Bottom sleeve
900.3	Prigioniero con dado	Stud with nut
903.5	Tappo	Plug

Grandezze - Size : 32-16, 32-20, 50-16



N.	DESCRIZIONE	DESCRIPTION
103	Corpo	Casing
161	Coperchio del corpo l.c.	Casing cover d.s
183	Piede di appoggio	Support foot
210	Albero	Shaft
230	Girante	Impeller
260	Ogiva girante	Impeller hub
320.1	Cuscinetto a sfere l.o.c.	Ball bearing N.D.S.
320.2	Cuscinetto a sfere l.c.	Ball bearing D.S.
330	Supporto	Bearing housing
360.1	Coperchio cuscinetto l.o.c.	Bearing cover N.D.S.
360.2	Coperchio cuscinetto l.c.	Bearing cover D.S.
400.1	Guarnizione del corpo l.c.	Casing gasket D.S.
400.2	Guarnizione coperchio cuscinetto l.c.	Bearing cover gasketl D.S.
400.3	Guarnizione coperchio cuscinetto l.o.c.	Bearing cover gasket N.D.S.
400.4	Guarnizione camicia	Sleeve gasket
420.1	Anello di tenuta l.c.	Bearing cover seal D.S.

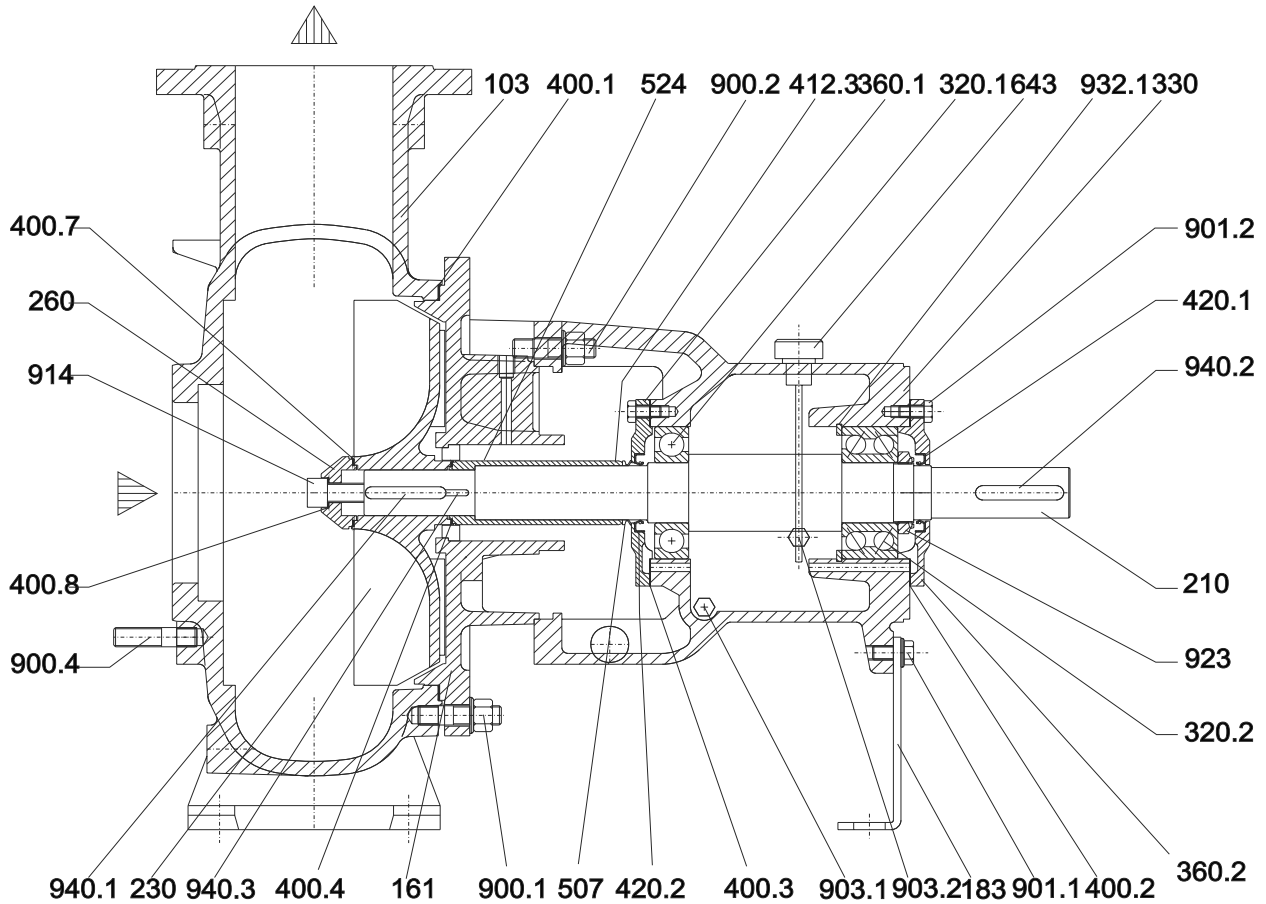
N.	DESCRIZIONE	DESCRIPTION
420.2	Anello di tenuta l.o.c.	Bearing cover seal N.D.S.
507	V. Ring	V. Ring
524	Camicia albero	Shaft sleeve
643	Tappo di sfiato con astina	Oil dipstick
900.1	Prigioniero con dado	Stud with nut
900.2	Prigioniero con dado	Stud with nut
900.4	Prigioniero con dado	Stud with nut
901.1	Vite T.E.	Hex head screw
901.2	Vite T.E.	Hex head screw
903.1	Tappo scarico olio	Oil drain plug
903.2	Tappo oliatore	Constant level oiler plug
932.1	Anello di sicurezza (seeger) foro	Hole circlip
932.2	Anello di sicurezza (seeger) albero	Shaft circlip
940.1	Linguetta girante	Impeller key
940.2	Linguetta giunto	Coupling key

Grandezze - Size : 50-20, 50-25, 65-20, 80-20, 80-25, 100-25, 125-25


N.	DESCRIZIONE	DESCRIPTION
103	Corpo	Casing
161	Coperchio del corpo l.c.	Casing cover d.s
183	Piede di appoggio	Support foot
210	Albero	Shaft
230	Girante	Impeller
231(a)	Anello vite girante(a)	Ring screw impeller(a)
260	Ogiva girante	Impeller hub
320.1	Cuscinetto a sfere l.o.c.	Ball bearing N.D.S.
320.2	Cuscinetto a sfere l.c.	Ball bearing D.S.
330	Supporto	Bearing housing
360.1	Coperchio cuscinetto l.o.c.	Bearing cover N.D.S.
360.2	Coperchio cuscinetto l.c.	Bearing cover D.S.
400.1	Guarnizione del corpo l.c.	Casing gasket D.S.
400.2	Guarnizione coperchio cuscinetto l.c.	Bearing cover gasket D.S.
400.3	Guarnizione coperchio cuscinetto l.o.c.	Bearing cover gasket N.D.S.
400.4	Guarnizione camicia	Sleeve gasket
420.1	Anello di tenuta l.c.	Bearing cover seal D.S.

N.	DESCRIZIONE	DESCRIPTION
420.2	Anello di tenuta l.o.c.	Bearing cover seal N.D.S.
507	V. Ring	V. Ring
524	Camicia albero	Shaft sleeve
643	Tappo di sfiato con astina	Oil dipstick
900.1	Prigioniero con dado	Stud with nut
900.2	Prigioniero con dado	Stud with nut
900.4	Prigioniero con dado	Stud with nut
901.1	Vite T.E.	Hex head screw
901.2	Vite T.E.	Hex head screw
903.1	Tappo scarico olio	Oil drain plug
903.2	Tappo oliatore	Constant level oiler plug
914	Vite ogivale	Screw
932.1	Anello di sicurezza (seeger) foro	Hole circlip
932.2	Anello di sicurezza (seeger) albero	Shaft circlip
940.1	Linguetta girante	Impeller key
940.2	Linguetta giunto	Coupling key
940.3	Linguetta camicia	Sleeve key

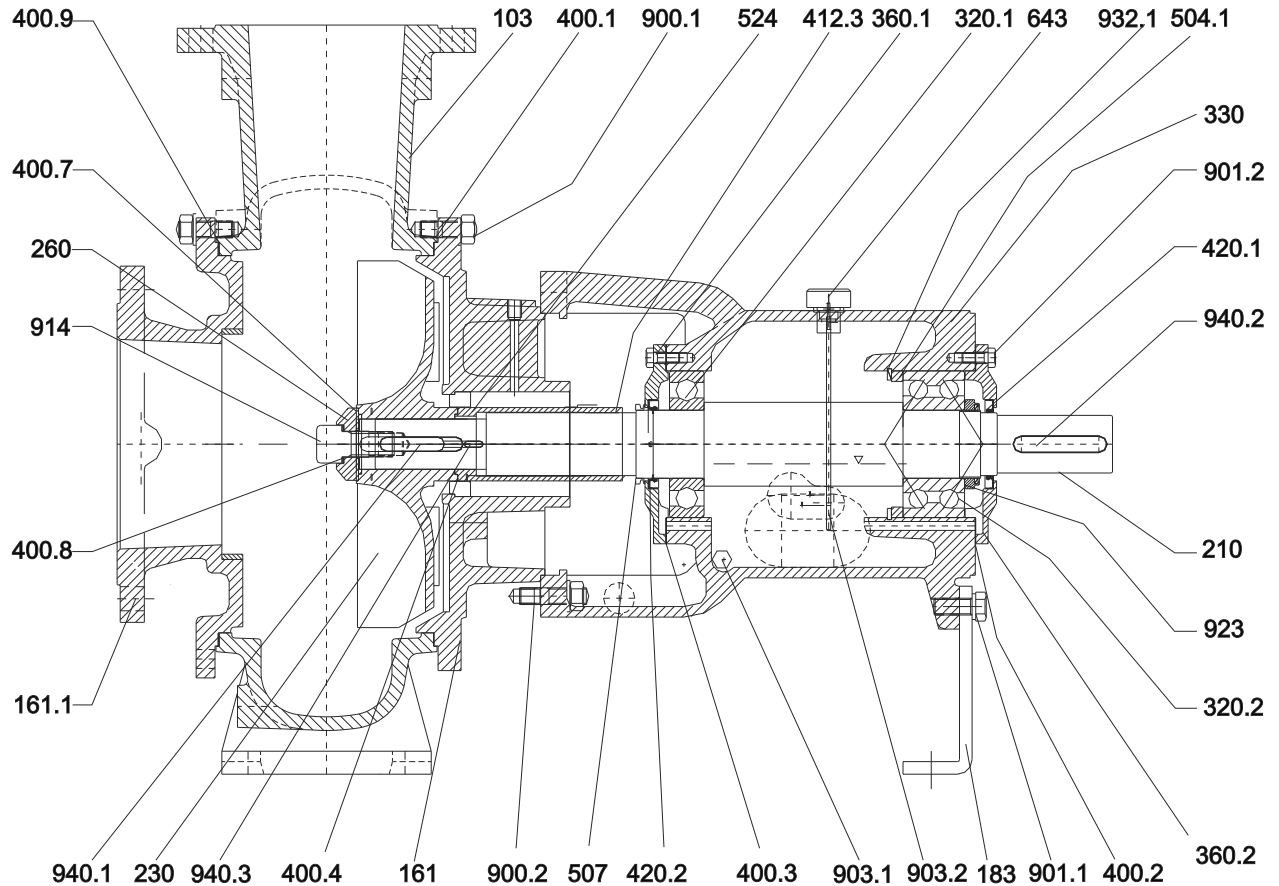
Grandezze - Size : 80-31, 125-31, 150-31



N.	DESCRIZIONE	DESCRIPTION
103	Corpo	Casing
161	Coperchio del corpo l.c.	Casing cover d.s.
183	Piede di appoggio	Support foot
210	Albero	Shaft
230	Girante	Impeller
260	Ogiva girante	Impeller hub
320.1	Cuscinetto a sfere l.o.c.	Ball bearing N.D.S.
320.2	Cuscinetto a sfere l.c.	Ball bearing D.S.
330	Supporto	Bearing housing
360.1	Coperchio cuscinetto l.o.c.	Bearing cover N.D.S.
360.2	Coperchio cuscinetto l.c.	Bearing cover D.S.
400.1	Guarnizione del corpo l.c.	Casing gasket D.S.
400.2	Guarnizione coperchio cuscinetto l.c.	Bearing cover gasket D.S.
400.3	Guarnizione coperchio cuscinetto l.o.c.	Bearing cover gasket N.D.S.
400.4	Guarnizione camicia	Sleeve gasket
400.7	Guarnizione ogiva	Hub gasket
400.8	Guarnizione vite ogivale	screw gasket
412.3	O.ring camicia	O-ring shaft sleeve

N.	DESCRIZIONE	DESCRIPTION
420.1	Anello di tenuta l.c.	Bearing cover seal D.S.
420.2	Anello di tenuta l.o.c.	Bearing cover seal N.D.S.
507	V. Ring	V. Ring
524	Camicia albero	Shaft sleeve
643	Tappo di sfiato con astina	Oil dipstick
900.1	Prigioniero con dado	Stud with nut
900.2	Prigioniero con dado	Stud with nut
900.4	Prigioniero con dado	Stud with nut
901.1	Vite T.E.	Hex head screw
901.2	Vite T.E.	Hex head screw
903.1	Tappo scarico olio	Oil drain plug
903.2	Tappo oliatore	Constant level oiler plug
914	Vite ogivale	Screw
923	Ghiera cuscinetto	Bearing nut
932.1	Anello di sicurezza (seeger) foro	Hole circlip
940.1	Linguetta girante	Impeller key
940.2	Linguetta giunto	Coupling key
940.3	Linguetta camicia	Sleeve key

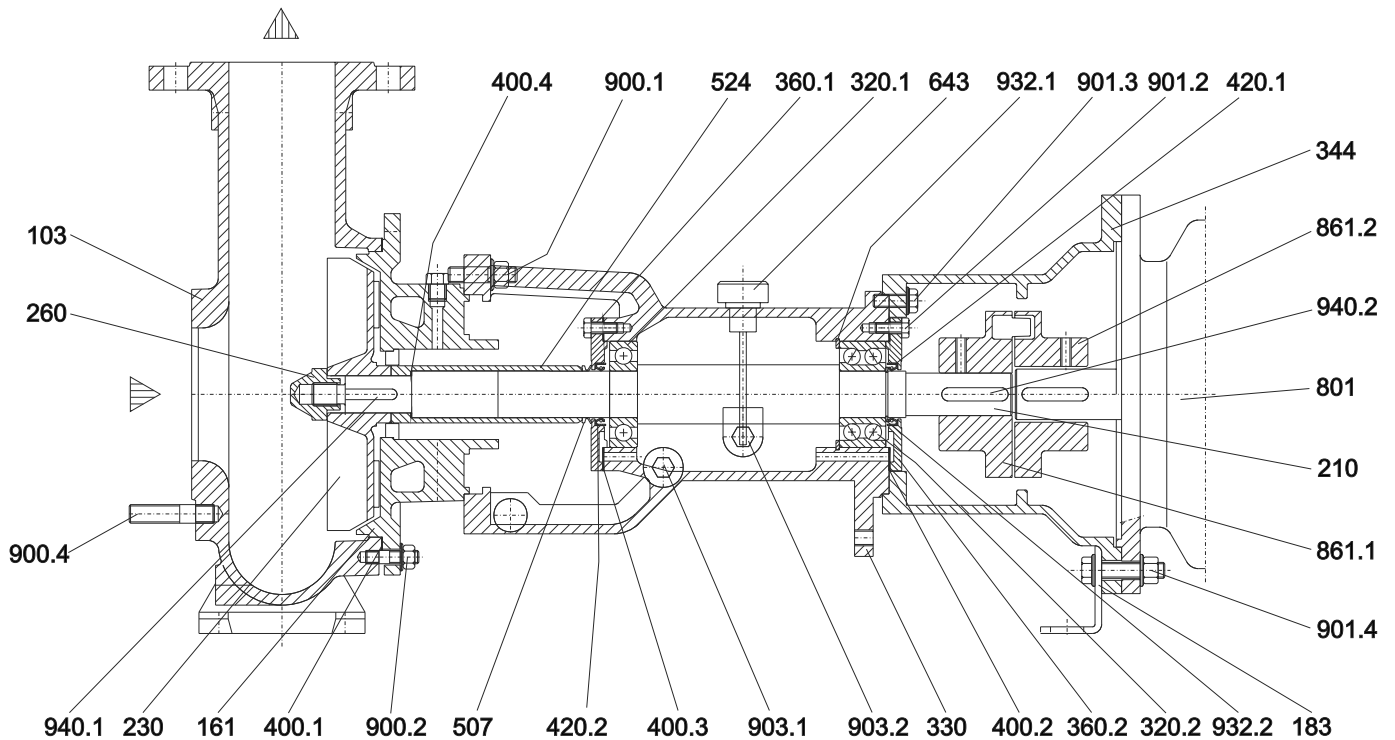
Grandezze - Size : 150-35, 200-35, 250-35



N.	DESCRIZIONE	DESCRIPTION
103	Corpo	Casing
161	Coperchio del corpo l.c.	Casing cover d.s
161.1	Coperchio del corpo l.o.c.	Casing cover n.d.s.
183	Piede di appoggio	Support foot
210	Albero	Shaft
230	Girante	Impeller
260	Ogiva girante	Impeller hub
320.1	Cuscinetto a sfere l.o.c.	Ball bearing N.D.S.
320.2	Cuscinetto a sfere l.c.	Ball bearing D.S.
330	Supporto	Bearing housing
360.1	Coperchio cuscinetto l.o.c.	Bearing cover N.D.S.
360.2	Coperchio cuscinetto l.c.	Bearing cover D.S.
400.1	Guarnizione del corpo l.c.	Casing gasket D.S.
400.2	Guarnizione coperchio cuscinetto l.c.	Bearing cover gasketl D.S.
400.3	Guarnizione coperchio cuscinetto l.o.c.	Bearing cover gasket N.D.S.
400.4	Guarnizione camicia	Sleeve gasket
400.7	Guarnizione ogiva	Hub gasket
400.8	Guarnizione vite ogivale	screw gasket
400.9	Guarnizione del corpo l.o.c.	Casing gasket N.D.S.

N.	DESCRIZIONE	DESCRIPTION
412.3	O.ring camicia	O-ring shaft sleeve
420.1	Anello di tenuta l.c.	Bearing cover seal D.S.
420.2	Anello di tenuta l.o.c.	Bearing cover seal N.D.S.
504.1	Distanziale cuscinetto	Ball bearing spacer
507	V. Ring	V. Ring
524	Camicia albero	Shaft sleeve
643	Tappo di sfiato con astina	Oil dipstick
900.1	Prigioniero con dado	Stud with nut
900.2	Prigioniero con dado	Stud with nut
901.1	Vite T.E.	Hex head screw
901.2	Vite T.E.	Hex head screw
903.1	Tappo scarico olio	Oil drain plug
903.2	Tappo oliatore	Constant level oiler plug
914	Vite ogivale	Screw
923	Ghiera cuscinetto	Bearing nut
932.1	Anello di sicurezza (seeger) foro	Hole circlip
940.1	Linguetta girante	Impeller key
940.2	Linguetta giunto	Coupling key
940.3	Linguetta camicia	Sleeve key

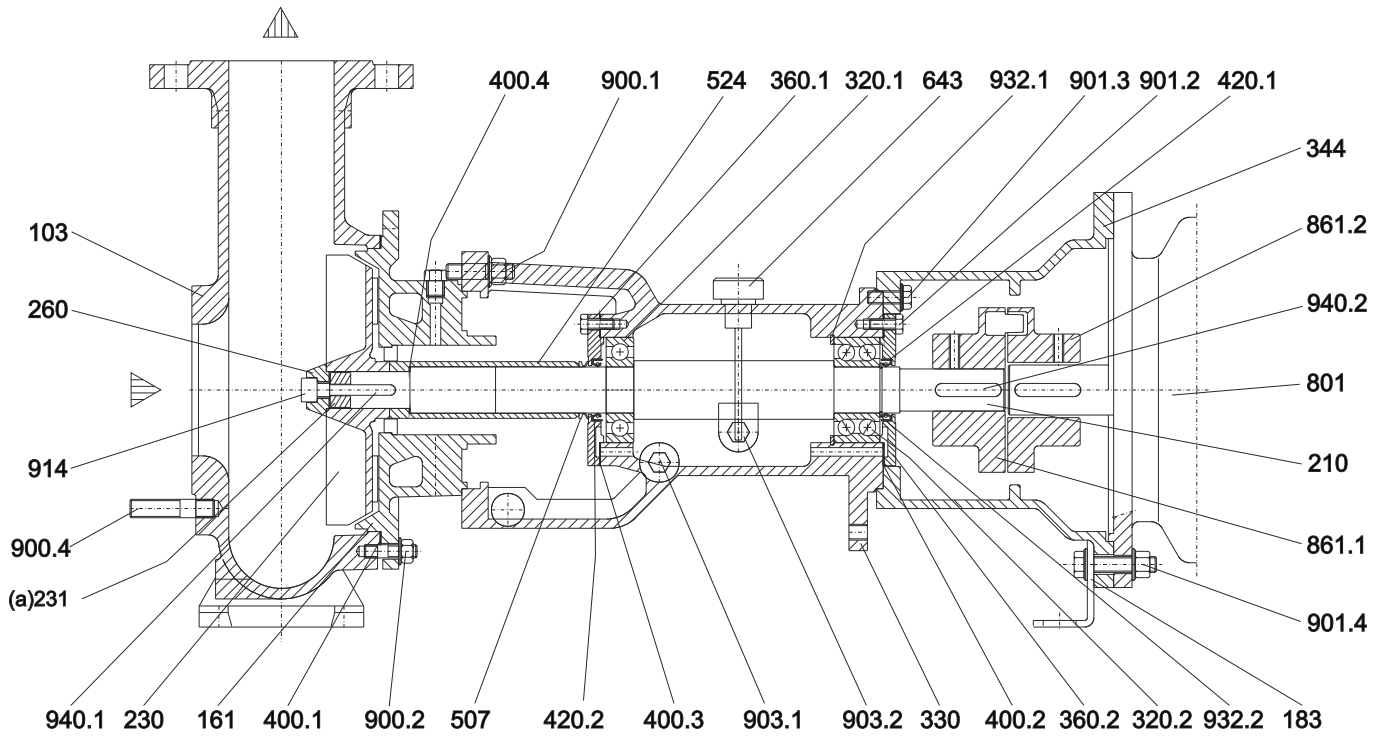
Grandezze - Size : 32-16, 32-20, 50-16



N.	DESCRIZIONE	DESCRIPTION
103	Corpo	Casing
161	Coperchio del corpo	Casing cover
183	Piede di appoggio	Support foot
210	Albero	Shaft
230	Girante	Impeller
260	Ogiva girante	Impeller hub
320.1	Cuscinetto a sfere l.o.c.	Ball bearing N.D.S.
320.2	Cuscinetto a sfere l.c.	Ball bearing D.S.
330	Supporto	Bearing housing
344	Lanterna motore	Lantern bracket
360.1	Coperchio cuscinetto l.o.c.	Bearing cover N.D.S.
360.2	Coperchio cuscinetto l.c.	Bearing cover D.S.
400.1	Guarnizione del corpo	Casing gasket
400.2	Guarnizione coperchio cuscinetto l.c.	Bearing cover gasket D.S.
400.3	Guarnizione coperchio cuscinetto l.o.c.	Bearing cover gasket N.D.S.
400.4	Guarnizione camicia	Sleeve gasket
420.1	Anello di tenuta l.c.	Bearing cover seal D.S.
420.2	Anello di tenuta l.o.c.	Bearing cover seal N.D.S.

N.	DESCRIZIONE	DESCRIPTION
507	V. Ring	V. Ring
524	Camicia albero	Shaft sleeve
643	Tappo di sfiato con astina	Oil dipstick
801	Motore elettrico	Electric motor
861.1	Semi giunto lato pompa	Half coupling pump side
861.2	Semi giunto lato motore	Half coupling motor side
900.1	Prigioniero con dado	Stud with nut
900.2	Prigioniero con dado	Stud with nut
900.4	Prigioniero con dado	Stud with nut
901.2	Vite T.E.	Hex head screw
901.3	Vite T.E.	Hex head screw
901.4	Vite T.E.	Hex head screw
903.1	Tappo scarico olio	Oil drain plug
903.2	Tappo oliatore	Constant level oiler plug
932.1	Anello di sicurezza (seeger) foro	Hole circlip
932.2	Anello di sicurezza (seeger) albero	Shaft circlip
940.1	Linguetta girante	Impeller key
940.2	Linguetta giunto	Coupling key

Grandezze - Size : 50-20, 50-25, 65-20, 80-20, 80-25, 100-25, 125-25

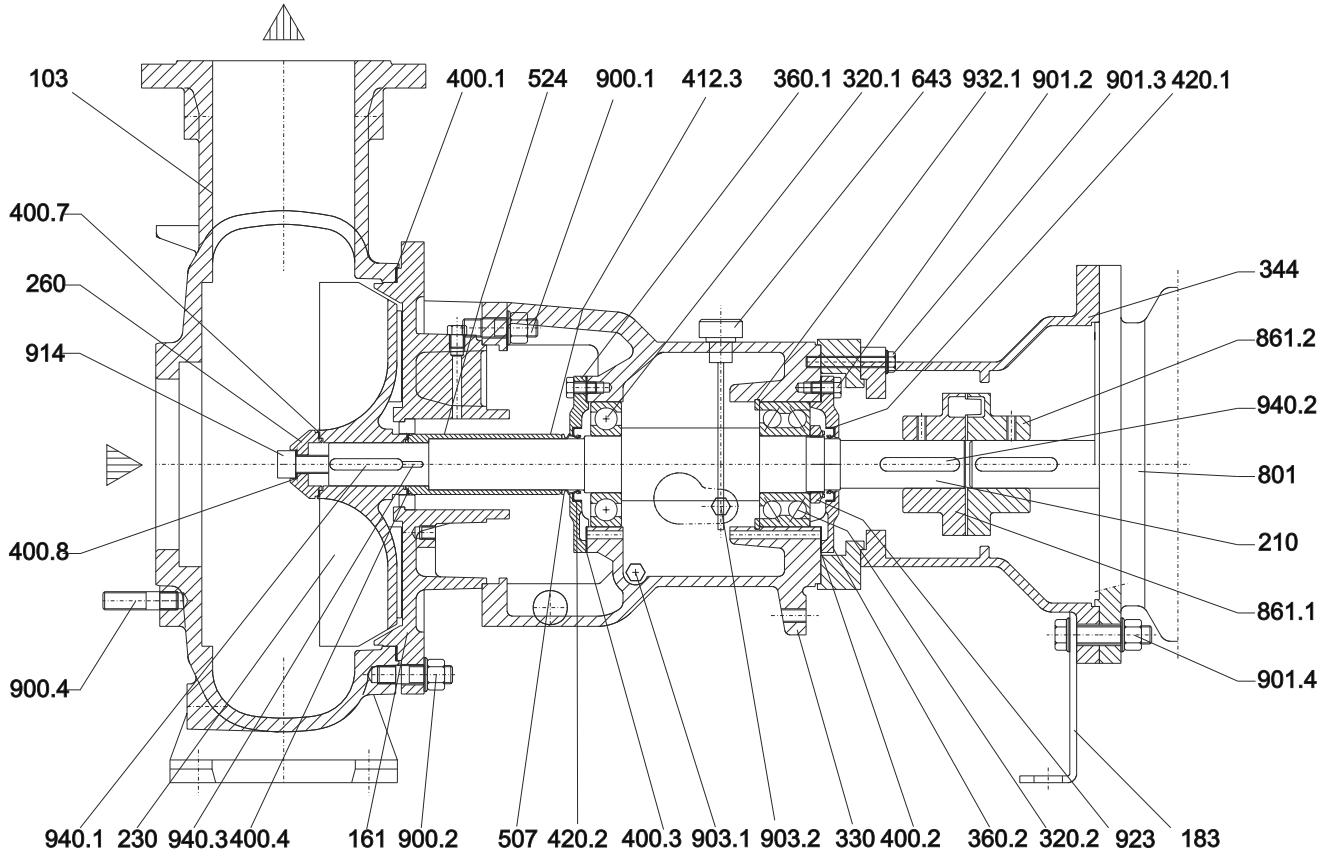


N.	DESCRIZIONE	DESCRIPTION
103	Corpo	Casing
161	Coperchio del corpo	Casing cover
183	Piede di appoggio	Support foot
210	Albero	Shaft
230	Girante	Impeller
231(a)	Anello vite girante(a)	Ring screw impeller(a)
260	Ogiva girante	Impeller hub
320.1	Cuscinetto a sfere I.o.c.	Ball bearing N.D.S.
320.2	Cuscinetto a sfere I.c.	Ball bearing D.S.
330	Supporto	Bearing housing
344	Lanterna motore	Lantern bracket
360.1	Coperchio cuscinetto I.o.c.	Bearing cover N.D.S.
360.2	Coperchio cuscinetto I.c.	Bearing cover D.S.
400.1	Guarnizione del corpo	Casing gasket
400.2	Guarnizione coperchio cuscinetto I.c.	Bearing cover gasket D.S.
400.3	Guarnizione coperchio cuscinetto I.o.c.	Bearing cover gasket N.D.S.
400.4	Guarnizione camicia	Sleeve gasket
420.1	Anello di tenuta I.c.	Bearing cover seal D.S.
420.2	Anello di tenuta I.o.c.	Bearing cover seal N.D.S.

N.	DESCRIZIONE	DESCRIPTION
507	V. Ring	V. Ring
524	Camicia albero	Shaft sleeve
643	Tappo di sfiato con astina	Oil dipstick
801	Motore elettrico	Electric motor
861.1	Semi giunto lato pompa	Half coupling pump side
861.2	Semi giunto lato motore	Half coupling motor side
900.1	Prigioniero con dado	Stud with nut
900.2	Prigioniero con dado	Stud with nut
900.4	Prigioniero con dado	Stud with nut
901.2	Vite T.E.	Hex head screw
901.3	Vite T.E.	Hex head screw
901.4	Vite T.E.	Hex head screw
903.1	Tappo scarico olio	Oil drain plug
903.2	Tappo oliatore	Constant level oiler plug
914	Vite ogivale	Screw
932.1	Anello di sicurezza (seeger) foro	Hole circlip
932.2	Anello di sicurezza (seeger) albero	Shaft circlip
940.1	Linguetta girante	Impeller key
940.2	Linguetta giunto	Coupling key

⁰⁰Solo per grandezze: 80-20S, 80-25, 100-25, 125.25
Only size : 80-20S, 80-25, 100-25, 125.25

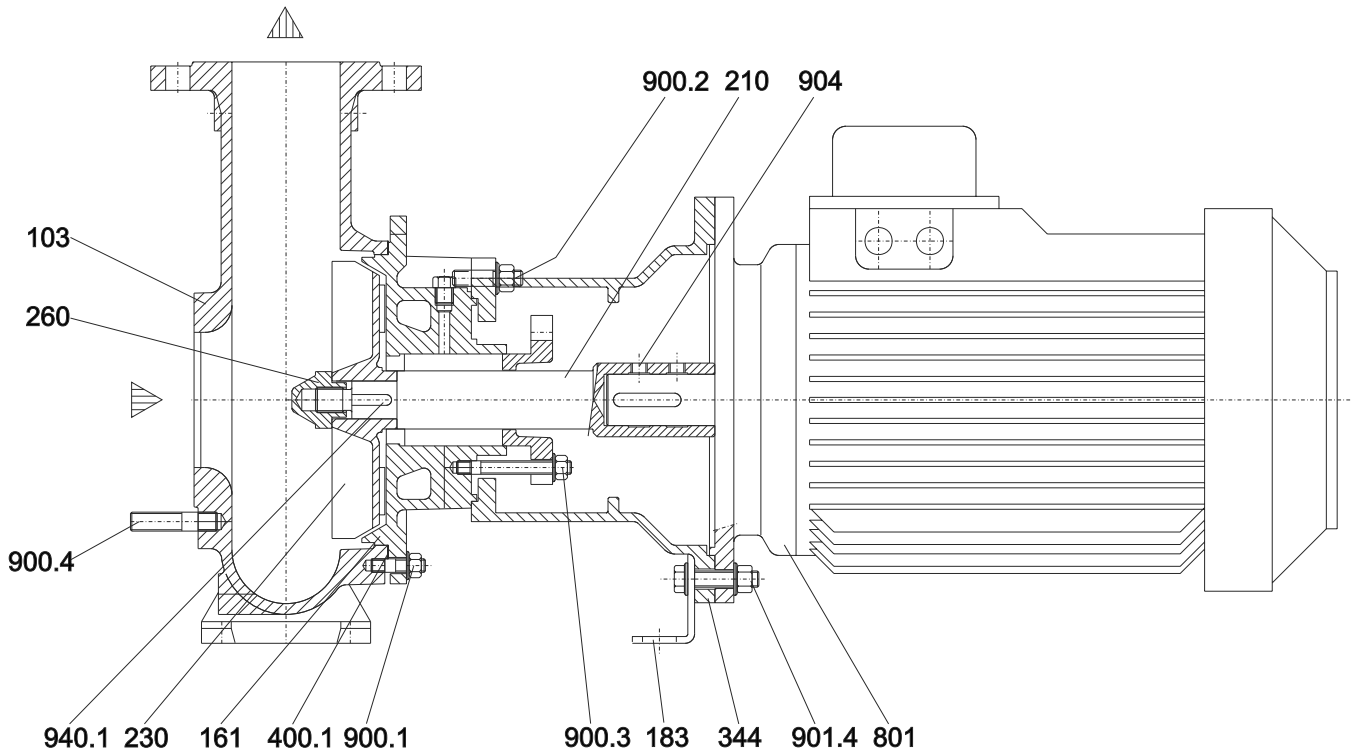
Grandezze - Size : 80-31, 125-31, 150-31



N.	DESCRIZIONE	DESCRIPTION
103	Corpo	Casing
161	Coperchio del corpo	Casing cover
183	Piede di appoggio	Support foot
210	Albero	Shaft
230	Girante	Impeller
260	Ogiva girante	Impeller hub
320.1	Cuscinetto a sfere l.o.c.	Ball bearing N.D.S.
320.2	Cuscinetto a sfere l.c.	Ball bearing D.S.
330	Supporto	Bearing housing
344	Lanterna motore	Lantern bracket
360.1	Coperchio cuscinetto l.o.c.	Bearing cover N.D.S.
360.2	Coperchio cuscinetto l.c.	Bearing cover D.S.
400.1	Guarnizione del corpo	Casing gasket
400.2	Guarnizione coperchio cuscinetto l.c.	Bearing cover gasket l.c.
400.3	Guarnizione coperchio cuscinetto l.o.c.	Bearing cover gasket N.D.S.
400.4	Guarnizione camicia	Sleeve gasket
400.7	Guarnizione ogiva	Hub gasket
400.8	Guarnizione vite ogivale	screw gasket
412.3	O-ring camicia	O-ring shaft sleeve
420.1	Anello di tenuta l.c.	Bearing cover seal D.S.
420.2	Anello di tenuta l.o.c.	Bearing cover seal N.D.S.

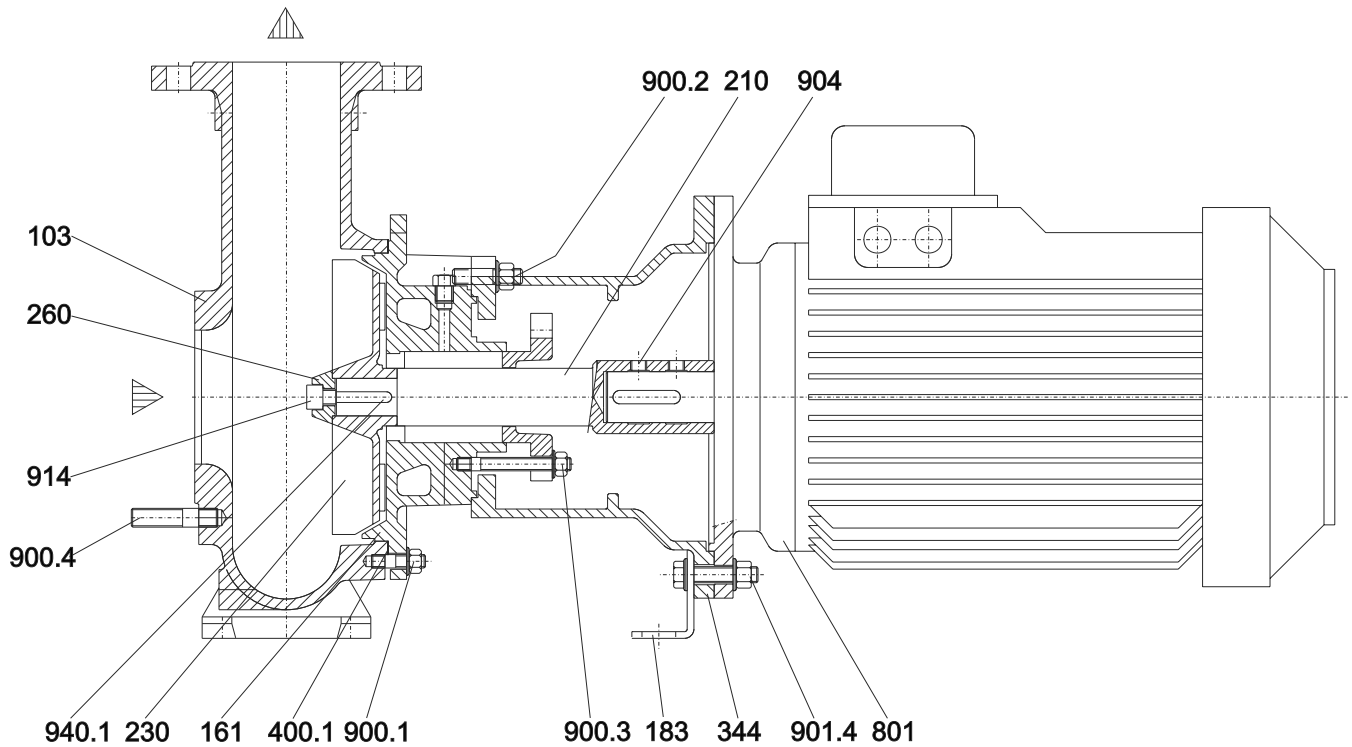
N.	DESCRIZIONE	DESCRIPTION
507	V. Ring	V. Ring
524	Camicia albero	Shaft sleeve
643	Tappo di sfiato con astina	Oil dipstick
801	Motore elettrico	Electric motor
861.1	Semi giunto lato pompa	Half coupling pump side
861.2	Semi giunto lato motore	Half coupling motor side
900.1	Prigioniero con dado	Stud with nut
900.2	Prigioniero con dado	Stud with nut
900.4	Prigioniero con dado	Stud with nut
901.2	Vite T.E.	Hex head screw
901.3	Vite T.E.	Hex head screw
901.4	Vite T.E.	Hex head screw
903.1	Tappo scarico olio	Oil drain plug
903.2	Tappo oliatore	Constant level oiler plug
914	Vite ogivale	Screw
923	Ghiera cuscinetto	Bearing nut
932.1	Anello di sicurezza (seeger) foro	Hole circlip
940.1	Linguetta girante	Impeller key
940.2	Linguetta giunto	Coupling key
940.3	Linguetta camicia	Sleeve key

Grandezze - Size : 32-16, 32-20, 50-16



N.	DESCRIZIONE	DESCRIPTION
103	Corpo	Casing
161	Coperchio del corpo	Casing cover
183	Piede di appoggio	Support foot
210	Albero	Shaft
230	Girante	Impeller
260	Ogiva girante	Impeller hub
344	Lanterna motore	Lantern bracket
400.1	Guarnizione del corpo	Casing gasket
801	Motore elettrico	Electric motor
900.1	Prigioniero con dado	Stud with nut
900.2	Prigioniero con dado	Stud with nut
900.3	Prigioniero con dado	Stud with nut
900.4	Prigioniero con dado	Stud with nut
901.4	Vite T.E.	Hex head screw
904	Grano	Locking screw
940.1	Linguetta girante	Impeller key

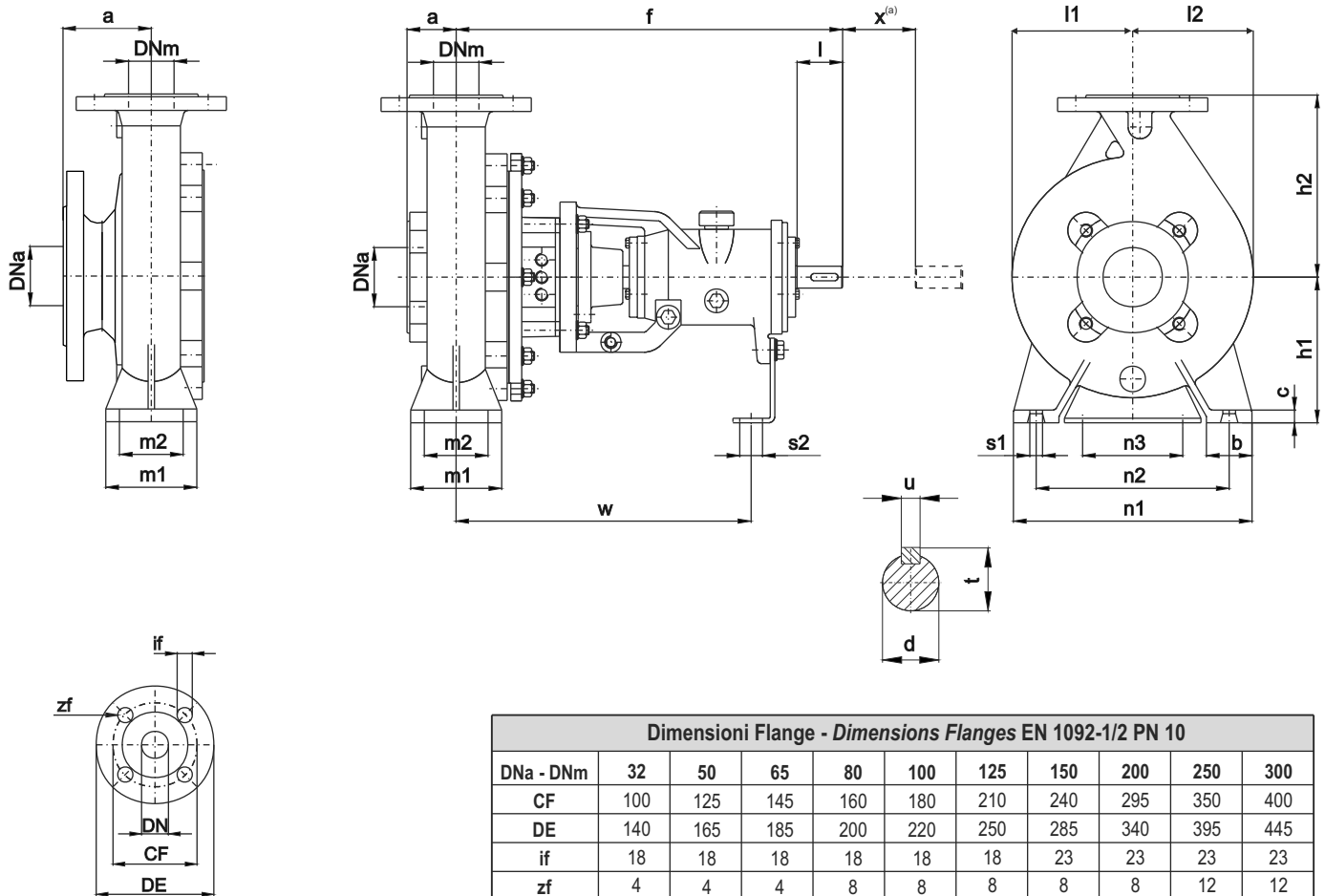
Grandezze - Size : 50-20, 50-25, 65-20, 80-20, 80-25, 100-25, 125-25



N.	DESCRIZIONE	DESCRIPTION
103	Corpo	Casing
161	Coperchio del corpo	Casing cover
183	Piede di appoggio	Support foot
210	Albero	Shaft
230	Girante	Impeller
260	Ogiva girante	Impeller hub
344	Lanterna motore	Lantern bracket
400.1	Guarnizione del corpo	Casing gasket
801	Motore elettrico	Electric motor
900.1	Prigioniero con dado	Stud with nut
900.2	Prigioniero con dado	Stud with nut
900.3	Prigioniero con dado	Stud with nut
900.4	Prigioniero con dado	Stud with nut
901.4	Vite T.E.	Hex head screw
904	Grano	Locking screw
914	Vite ogivale	Screw
940.1	Linguetta girante	Impeller key

Solo per Grandezze - only size :
150-35, 200-35, 250-35

Grandezze - Size :
32-16, 32-20, 50-16, 50-20, 50-25, 65-20,
80-20, 80-20S, 80-25, 100-25, 125-25, 125-31, 125-40, 150-31


Dimensioni Flange - Dimensions Flanges EN 1092-1/2 PN 10

DNa - DNm	32	50	65	80	100	125	150	200	250	300
CF	100	125	145	160	180	210	240	295	350	400
DE	140	165	185	200	220	250	285	340	395	445
if	18	18	18	18	18	18	23	23	23	23
zf	4	4	4	8	8	8	8	8	12	12

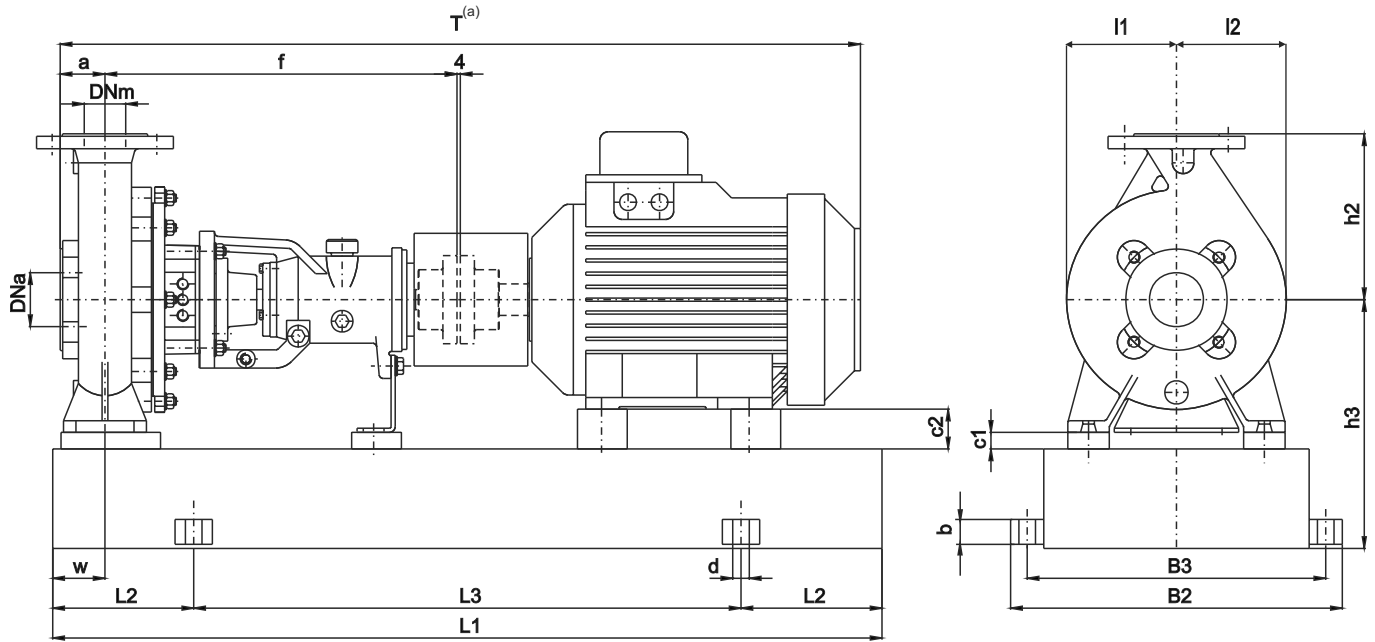
Pompa tipo Pump size	Supporto Bearing Housing	DIMENSIONI - DIMENSIONS [mm]																							Peso Weight [kg]	
		Pompa - Pump						Piedi - Feet						Albero - Shaft												
		Dna	Dnm	a	f	h1	h2	b	c	m1	m2	n1	n2	n3	s1	s2	w	d	l	t	u	l1	l2	x ^(a)		T ^(b)
32-16	25	50	32	48	418	132	160	50	14	100	70	240	190	110	14	14	317	24	50	27	8	114	114	100	566	33
32-20	25	50	32	48	418	160	180	50	14	100	70	240	190	110	14	14	317	24	50	27	8	135,5	135,5	100	566	39
50-16	25	65	50	55	427	160	180	50	14	100	70	265	212	110	14	14	327	24	50	27	8	121,5	121,5	100	582	36
50-20	35	65	50	55	532	160	200	50	14	100	70	265	212	110	14	14	403	32	80	35	10	141	141	100	687	51
50-25	35	65	50	55	534	180	225	65	16	125	95	320	250	110	14	14	405	32	80	35	10	175	175	100	689	59
65-20	35	80	65	66	542	180	225	65	16	125	95	320	250	110	14	14	413	32	80	35	10	150,5	150,5	140	748	58
80-20(S)	35	100	80	70	550	180	250	65	16	125	95	345	280	110	14	14	422	32	80	35	10	159	159	140	760	61
80-25	35	100	80	75	575	225	280	80	18	160	120	400	315	110	18	14	448	32	80	35	10	176	176	140	790	77
80-31	50	100	80	90	587	250	315	80	18	160	120	400	315	110	18	14	428	42	110	45	12	227	205	140	817	127
100-25	35	125	100	90	587	225	280	80	18	160	120	400	315	110	18	14	460	32	80	35	10	216	183	140	817	92
125-25	35	150	125	112	597	250	355	100	18	160	120	400	315	110	18	14	472	32	80	35	10	254	208	140	849	114
125-31	50	150	125	112	600	280	355	100	20	200	150	500	400	110	23	14	440	42	110	45	12	256	223	140	852	147
150-31	50	200	150	120	597	315	400	100	22	200	150	550	450	110	24	14	435	42	110	45	12	316	243	200	917	173
150-35	65	200	150	200	752	315	400	100	22	200	150	550	450	140	24	14	578	55	110	59	16	300	257	200	1152	261
200-35	65	250	200	250	765	355	450	100	22	200	150	550	450	140	24	19	591	55	110	59	16	352	275	200	1215	302
250-35	65	300	250	300	779	355	500	130	26	260	190	690	560	140	28	19	605	55	110	59	16	371	286	200	1279	355

Quote e pesi suscettibili di variazione.
Dimensions and weights are subject to variations.

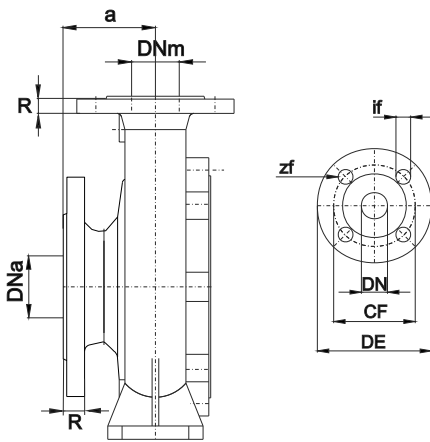
^(a) Lunghezza del giunto spaziatore.
Spacer coupling's length.

Grandezze - Size:

32-16, 32-20, 50-16, 50-20, 50-25, 65-20, 80-20, 80-20S, 80-25, 100-25, 125-25, 125-31, 125-40, 150-31



Solo per Grandezze - only size :
150-35, 200-35, 250-35



Dimensioni Flange - Dimensions Flanges EN 1092-1/2 PN 10										
DNa - DNm	32	50	65	80	100	125	150	200	250	300
CF	100	125	145	160	180	210	240	295	350	400
DE	140	165	185	200	220	250	285	340	395	445
if	18	18	18	18	18	18	23	23	23	23
zf	4	4	4	8	8	8	8	8	12	12

ACCOPIAMENTO POTENZA - POLARITA' / GRANDEZZA MOTORE POWER-POLARITY / MOTOR SIZE COUPLING																												
2POLI	Grand.	71	80	80	90S	90L	100L	112M	132S	132S	132M	160M	160M	160L	180M	200L	200L	225M	250M	280S	280M	315S	315M					
	kW	0,55	0,75	1,1	1,5	2,2	3	4	5,5	7,5	9,2	11	15	18,5	22	30	37	45	55	75	90	110	132					
4POLI	Grand.	80	80	90S	90L	100L	100L	112M	132S	132M	132M	160M	160L	180M	180L	200L	225S	225M	250M	280S	280M	315S	315M	315M	315L	355L	355L	355L
	kW	0,55	0,75	1,1	1,5	2,2	3	4	5,5	7,5	9,2	11	15	18,5	22	30	37	45	55	75	90	110	132	160	200	250	315	355
6POLI	Grand.	80	90S	90L	100L	112M	132S	132M	132M	160M	160L	180L	200L	200L	225L	250M	280S	280M	315S	315M	315M	315M						
	kW	0,55	0,75	1,1	1,5	2,2	3	4	5,5	7,5	11	15	18,5	22	30	37	45	55	75	90	110	132						

Ingombri su base con giunto standard
Overall dimensions on base with standard coupling

Pompa tipo - Pump size	Grandezza motore - Motor size	Base - Base plate	DIMENSIONI - DIMENSIONS [mm]																		Peso weight [kg] ^(a)	
			Dna	Dnm	a	f	h3	h2	L1	L2	L3	B2	B3	w	d	b	c1	c2	I1	I2		T ^(a)
32-16	80	1	50	32	48	418	192	160	750	120	510	355	320	60	19	30	0	52	240	190	760	64
	90S	1	50	32	48	418	192	160	750	120	510	355	320	60	19	30	0	42	240	190	780	67
	90L	1	50	32	48	418	192	160	750	120	510	355	320	60	19	30	0	42	240	190	805	70
	100L	2	50	32	48	418	252	160	1000	170	660	400	360	60	19	30	0	32	240	190	855	97
	112M	2	50	32	48	418	252	160	1000	170	660	400	360	60	19	30	0	20	240	190	871	108
	132S	2	50	32	48	418	252	160	1000	170	660	400	360	60	19	30	0	0	240	190	945	118
32-20	132M	2	50	32	48	418	252	160	1000	170	660	400	360	60	19	30	0	0	240	190	983	135
	80	1	50	32	48	418	220	180	750	120	510	355	320	60	19	30	0	80	240	190	760	71
	90S	1	50	32	48	418	220	180	750	120	510	355	320	60	19	30	0	70	240	190	780	73
	90L	1	50	32	48	418	220	180	750	120	510	355	320	60	19	30	0	70	240	190	805	76
	100L	2	50	32	48	418	280	180	1000	170	660	400	360	60	19	30	0	60	240	190	855	104
	112M	2	50	32	48	418	280	180	1000	170	660	400	360	60	19	30	0	48	240	190	871	114
50-16	132S	2	50	32	48	418	280	180	1000	170	660	400	360	60	19	30	0	28	240	190	945	124
	132M	2	50	32	48	418	280	180	1000	170	660	400	360	60	19	30	0	28	240	190	983	141
	160M	3	50	32	48	418	280	180	1200	205	790	440	400	60	19	30	0	0	240	190	1080	211
	160L	3	50	32	48	418	280	180	1200	205	790	440	400	60	19	30	0	0	240	190	1125	225
	90S	1	65	50	55	427	220	180	750	120	510	355	320	60	19	30	0	70	265	212	796	70
	90L	1	65	50	55	427	220	180	750	120	510	355	320	60	19	30	0	70	265	212	821	73
50-20	100L	2	65	50	55	427	280	180	1000	170	660	400	360	60	19	30	0	60	265	212	871	101
	112M	2	65	50	55	427	280	180	1000	170	660	400	360	60	19	30	0	48	265	212	887	111
	132S	2	65	50	55	427	280	180	1000	170	660	400	360	60	19	30	0	28	265	212	961	121
	132M	2	65	50	55	427	280	180	1000	170	660	400	360	60	19	30	0	28	265	212	999	138
	160M	3	65	50	55	427	280	180	1200	205	790	440	400	60	19	30	0	0	265	212	1096	208
	160L	3	65	50	55	427	280	180	1200	205	790	440	400	60	19	30	0	0	265	212	1141	222
50-25	100L	2	65	50	55	532	280	200	1000	170	660	400	360	60	19	30	0	60	265	212	976	116
	112M	2	65	50	55	532	280	200	1000	170	660	400	360	60	19	30	0	48	265	212	992	126
	132S	2	65	50	55	532	280	200	1000	170	660	400	360	60	19	30	0	28	265	212	1066	136
	132M	2	65	50	55	532	280	200	1000	170	660	400	360	60	19	30	0	28	265	212	1104	153
	160M	3	65	50	55	532	280	200	1200	205	790	440	400	60	19	30	0	0	265	212	1201	223
	160L	3	65	50	55	532	280	200	1200	205	790	440	400	60	19	30	0	0	265	212	1246	237
65-20	90S	2	65	50	55	534	300	225	1000	170	660	400	360	75	19	30	0	90	320	250	903	115
	90L	2	65	50	55	534	300	225	1000	170	660	400	360	75	19	30	0	90	320	250	928	118
	100L	2	65	50	55	534	300	225	1000	170	660	400	360	75	19	30	0	80	320	250	978	124
	112M	2	65	50	55	534	300	225	1000	170	660	400	360	75	19	30	0	68	320	250	994	134
	132S	2	65	50	55	534	300	225	1000	170	660	400	360	75	19	30	0	48	320	250	1068	144
	132M	2	65	50	55	534	300	225	1000	170	660	400	360	75	19	30	0	48	320	250	1106	161
80-20(S)	160M	3	65	50	55	534	300	225	1200	205	790	440	400	75	19	30	0	20	320	250	1203	231
	160L	3	65	50	55	534	300	225	1200	205	790	440	400	75	19	30	0	20	320	250	1248	245
	100L	2	80	65	66	542	300	225	1000	170	660	400	360	75	19	30	0	80	320	250	997	123
	112M	2	80	65	66	542	300	225	1000	170	660	400	360	75	19	30	0	68	320	250	1013	133
	132S	2	80	65	66	542	300	225	1000	170	660	400	360	75	19	30	0	48	320	250	1087	143
	132M	2	80	65	66	542	300	225	1000	170	660	400	360	75	19	30	0	48	320	250	1125	160
80-25	160M	3	80	65	66	542	300	225	1200	205	790	440	400	75	19	30	0	20	320	250	1222	230
	160L	3	80	65	66	542	300	225	1200	205	790	440	400	75	19	30	0	20	320	250	1267	244
	100L	3	100	80	70	550	300	250	1200	205	790	440	400	75	19	30	0	80	345	280	1009	136
	112M	3	100	80	70	550	300	250	1200	205	790	440	400	75	19	30	0	68	345	280	1025	146
	132S	3	100	80	70	550	300	250	1200	205	790	440	400	75	19	30	0	48	345	280	1099	156
	132M	3	100	80	70	550	300	250	1200	205	790	440	400	75	19	30	0	48	345	280	1137	173
80-31	160M	3	100	80	70	550	300	250	1200	205	790	440	400	75	19	30	0	20	345	280	1234	232
	160L	3	100	80	70	550	300	250	1200	205	790	440	400	75	19	30	0	20	345	280	1279	246
	112M	5	100	80	75	575	345	280	1200	205	790	505	465	90	19	30	0	113	400	315	1055	163
	132S	5	100	80	75	575	345	280	1200	205	790	505	465	90	19	30	0	93	400	315	1129	173
	132M	5	100	80	75	575	345	280	1200	205	790	505	465	90	19	30	0	93	400	315	1167	190
	160M	5	100	80	75	575	345	280	1200	205	790	505	465	90	19	30	0	65	400	315	1264	249
80-31	160L	5	100	80	75	575	345	280	1200	205	790	505	465	90	19	30	0	65	400	315	1309	263
	180M	6	100	80	75	575	390	280	1300	215	870	510	460	90	24	13	25	70	400	315	1344	297
	112M	5	100	80	75	575	345	280	1200	205	790	505	465	90	19	30	0	113	400	315	1055	163
	132S	5	100	80	75	575	345	280	1200	205	790	505	465	90	19	30	0	93	400	315	1129	173
	132M	5	100	80	75	575	345	280	1200	205	790	505	465	90	19	30	0	93	400	315	1167	190
	160M	5	100	80	75	575	345	280	1200	205	790	505	465	90	19	30	0	65	400	315	1264	249
80-31	160L	5	100	80	75	575	345	280	1200	205	790	505	465	90	19	30	0	65	400	315	1309	263
	180M	6	100	80	75	575	390	280	1300	215	870	510	460	90	24	13	25	70	400	315	1344	297
	180L	6	100	80	75	575	390	280	1300	215	870	510	460	90	24	13	25	70	400	315	1384	315
	132S	5	100	80	90	587	370	315	1200	205	790	505	465	90	19	30	0	118	400	315	1156	223
	132M	5	100	80	90	587	370	315	1200	205	790	505	465	90	19	30	0	118	400	315	1194	240
	160M	5	100	80	90	587	370	315	1200	205	790	505	465	90	19	30	0	90	400	315	1291	299
80-31	160L	5	100	80	90	587	370	315	1200	205	790	505	465	90	19	30	0	90	400	315	1336	313
	180M	6	100	80	90	587	415	315	1300													

Pompa tipo - Pump size	Grandezza motore - Motor size	Base - Base plate	DIMENSIONI - DIMENSIONS [mm]																		Peso weight ^(a) [kg]	
			Dna	Dnm	a	f	h3	h2	L1	L2	L3	B2	B3	w	d	b	c1	c2	l1	l2		T ^(a)
100-25	132S	5	125	100	90	587	345	280	1200	205	790	505	465	90	19	30	0	93	400	315	1156	188
	132M	5	125	100	90	587	345	280	1200	205	790	505	465	90	19	30	0	93	400	315	1194	205
	160M	5	125	100	90	587	345	280	1200	205	790	505	465	90	19	30	0	65	400	315	1291	264
	160L	5	125	100	90	587	345	280	1200	205	790	505	465	90	19	30	0	65	400	315	1336	278
	180M	6	125	100	90	587	390	280	1300	215	870	510	460	90	24	13	25	70	400	315	1371	312
	180L	6	125	100	90	587	390	280	1300	215	870	510	460	90	24	13	25	70	400	315	1411	330
200L	6	125	100	90	587	390	280	1300	215	870	510	460	90	24	13	25	50	400	315	1446	393	
125-25	132S	5	150	125	112	597	370	355	1200	205	790	505	465	90	19	30	0	118	400	315	1188	210
	132M	5	150	125	112	597	370	355	1200	205	790	505	465	90	19	30	0	118	400	315	1226	227
	160M	5	150	125	112	597	370	355	1200	205	790	505	465	90	19	30	0	90	400	315	1323	286
	160L	5	150	125	112	597	370	355	1200	205	790	505	465	90	19	30	0	90	400	315	1368	300
	180M	6	150	125	112	597	415	355	1300	215	870	510	460	90	24	13	25	95	400	315	1403	334
	180L	6	150	125	112	597	415	355	1300	215	870	510	460	90	24	13	25	95	400	315	1443	352
200L	6	150	125	112	597	415	355	1300	215	870	510	460	90	24	13	25	75	400	315	1478	415	
125-31	132M	6	150	125	112	600	445	355	1300	215	870	510	460	110	24	13	25	173	500	400	1229	262
	160M	6	150	125	112	600	445	355	1300	215	870	510	460	110	24	13	25	145	500	400	1326	321
	160L	6	150	125	112	600	445	355	1300	215	870	510	460	110	24	13	25	145	500	400	1371	335
	180M	6	150	125	112	600	445	355	1300	215	870	510	460	110	24	13	25	125	500	400	1406	367
	180L	6	150	125	112	600	445	355	1300	215	870	510	460	110	24	13	25	125	500	400	1446	385
	200L	7	150	125	112	600	445	355	1450	235	980	560	510	110	24	13	25	105	500	400	1481	456
	225S	7	150	125	112	600	445	355	1450	235	980	560	510	110	24	13	25	80	500	400	1526	469
	225M	7	150	125	112	600	445	355	1450	235	980	560	510	110	24	13	25	80	500	400	1551	501
250M	7	150	125	112	600	445	355	1450	235	980	560	510	110	24	13	25	55	500	400	1631	599	
150-31	160M	7	200	150	120	597	480	400	1450	235	980	560	510	110	24	13	25	180	550	450	1331	354
	160L	7	200	150	120	597	480	400	1450	235	980	560	510	110	24	13	25	180	550	450	1376	368
	180M	7	200	150	120	597	480	400	1450	235	980	560	510	110	24	13	25	160	550	450	1411	400
	180L	7	200	150	120	597	480	400	1450	235	980	560	510	110	24	13	25	160	550	450	1451	418
	200L	7	200	150	120	597	480	400	1450	235	980	560	510	110	24	13	25	140	550	450	1486	481
	225S	7	200	150	120	597	480	400	1450	235	980	560	510	110	24	13	25	115	550	450	1531	494
	225M	7	200	150	120	597	480	400	1450	235	980	560	510	110	24	13	25	115	550	450	1556	526
	250M	7	200	150	120	597	480	400	1450	235	980	560	510	110	24	13	25	90	550	450	1636	624
	280S	7	200	150	120	597	480	400	1450	235	980	560	510	110	24	13	25	60	550	450	1676	746
280M	8	200	150	120	597	480	400	1590	235	1120	560	510	110	24	13	25	60	550	450	1761	846	
315S	9	200	150	120	597	520	400	1900	260	1380	610	560	110	26	15	25	25	550	450	1936	1187	
150-35	180L	7	200	150	200	752	480	400	1450	235	980	560	510	110	24	13	25	160	550	450	1686	506
	200L	7	200	150	200	752	480	400	1450	235	980	560	510	110	24	13	25	140	550	450	1721	569
	225S	7	200	150	200	752	480	400	1450	235	980	560	510	110	24	13	25	115	550	450	1766	582
	225M	8	200	150	200	752	480	400	1590	235	1120	560	510	110	24	13	25	115	550	450	1791	618
	250M	8	200	150	200	752	480	400	1590	235	1120	560	510	110	24	13	25	90	550	450	1871	716
	280S	8	200	150	200	752	480	400	1590	235	1120	560	510	110	24	13	25	60	550	450	1911	838
	280M	9	200	150	200	752	520	400	1900	260	1380	610	560	110	26	15	25	60	550	450	1996	971
	315S	9	200	150	200	752	520	400	1900	260	1380	610	560	110	26	15	25	25	550	450	2171	1275
315M	9	200	150	200	752	520	400	1900	260	1380	610	560	110	26	15	25	25	550	450	2281	1421	
200-35	200L	7	250	200	250	765	520	450	1450	235	980	560	510	110	24	13	25	180	550	450	1784	610
	225S	7	250	200	250	765	520	450	1450	235	980	560	510	110	24	13	25	155	550	450	1829	623
	225M	8	250	200	250	765	520	450	1590	235	1120	560	510	110	24	13	25	155	550	450	1854	659
	250M	8	250	200	250	765	520	450	1590	235	1120	560	510	110	24	13	25	130	550	450	1934	757
	280S	8	250	200	250	765	520	450	1590	235	1120	560	510	110	24	13	25	100	550	450	1974	879
	280M	9	250	200	250	765	560	450	1900	260	1380	610	560	110	26	15	25	100	550	450	2059	1012
	315S	9	250	200	250	765	560	450	1900	260	1380	610	560	110	26	15	25	65	550	450	2234	1316
315M	9	250	200	250	765	560	450	1900	260	1380	610	560	110	26	15	25	65	550	450	2344	1462	
315L	9	250	200	250	765	560	450	1900	260	1380	610	560	110	26	15	25	65	550	450	2344	1534	
250-35	200L	10	300	250	300	779	560	500	2000	260	1480	710	660	140	26	15	25	180	690	560	1848	718
	225S	10	300	250	300	779	560	500	2000	260	1480	710	660	140	26	15	25	155	690	560	1893	731
	225M	10	300	250	300	779	560	500	2000	260	1480	710	660	140	26	15	25	155	690	560	1918	763
	250M	10	300	250	300	779	560	500	2000	260	1480	710	660	140	26	15	25	130	690	560	1998	861
	280S	10	300	250	300	779	560	500	2000	260	1480	710	660	140	26	15	25	100	690	560	2038	983
	280M	10	300	250	300	779	560	500	2000	260	1480	710	660	140	26	15	25	100	690	560	2123	1079
	315S	10	300	250	300	779	560	500	2000	260	1480	710	660	140	26	15	25	65	690	560	2298	1383
	315M	10	300	250	300	779	560	500	2000	260	1480	710	660	140	26	15	25	65	690	560	2408	1529
	315L	10	300	250	300	779	560	500	2000	260	1480	710	660	140	26	15	25	65	690	560	2408	1601
355L	10	300	250	300	779	560	500	2000	260	1480	710	660	140	26	15	25	25	690	560	2673	2373	

Quote e pesi suscettibili di variazione.
Dimensions and weights are subject to variations.

^(a)Quota indicativa può variare in funzione della marca del motore
Not binding dimension that can change according to motor maker

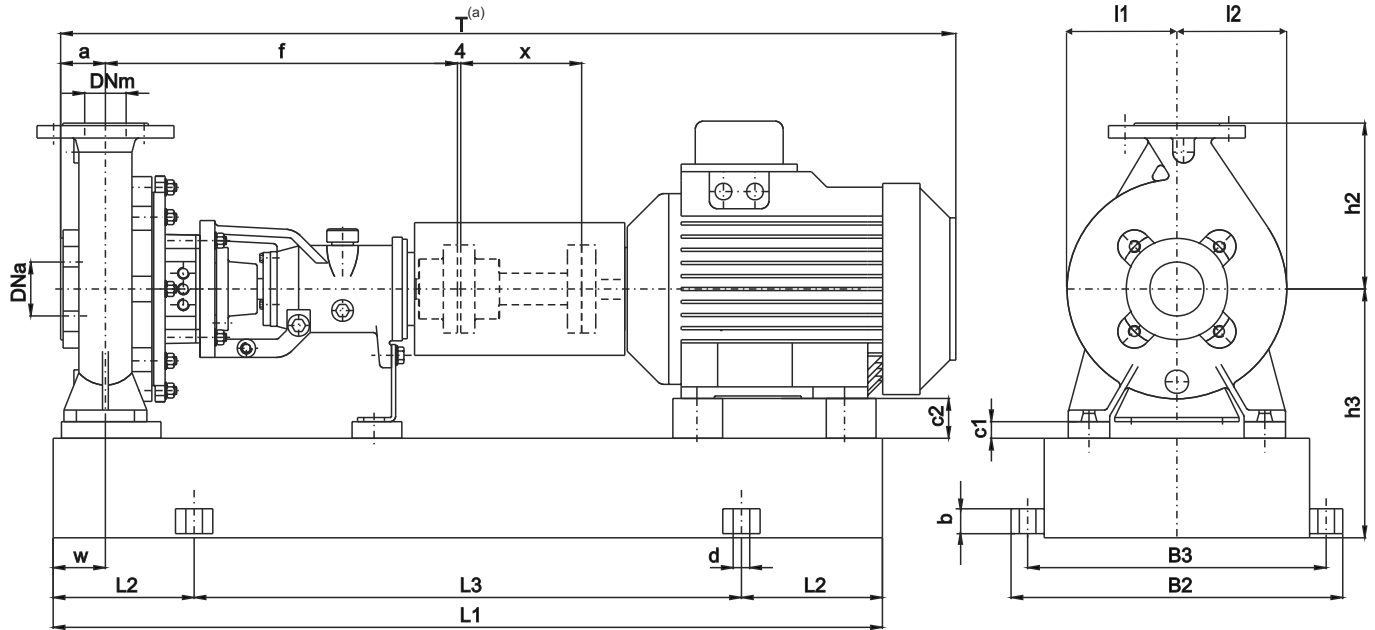
N.B.: Le dimensioni riferite a motori con carcassa superiore a 315MA (grandezze non normalizzate) potrebbero variare significativamente.
NOTE: Dimensions referred to motor sizes bigger than 315MA (not normalized state) could change considerably.

Ingombri su base con giunto spaziatore

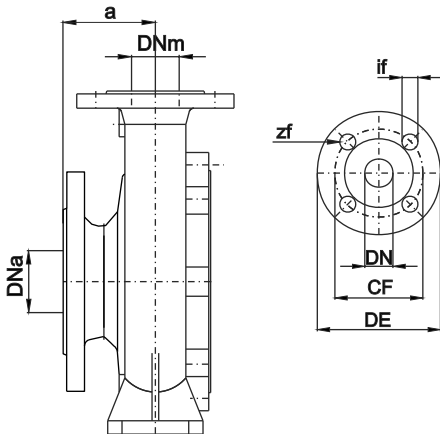
Overall dimensions on base with spacer coupling

Grandezze - Size:

32-16, 32-20, 50-16, 50-20, 50-25, 65-20, 80-20, 80-20S, 80-25, 100-25, 125-25, 125-31, 125-40, 150-31



Solo per Grandezze - only size :
150-35, 200-35, 250-35



Dimensioni Flange - Dimensions Flanges EN 1092-1/2 PN 10										
DNa - DNm	32	50	65	80	100	125	150	200	250	300
CF	100	125	145	160	180	210	240	295	350	400
DE	140	165	185	200	220	250	285	340	395	445
if	18	18	18	18	18	18	23	23	23	23
zf	4	4	4	8	8	8	8	8	12	12

Lunghezza del giunto spaziatore - Spacer coupling length																	
Pompa tipo Pump size		32-16	32-20	50-16	50-20	50-25	65-20	80-20	80-25	80-31	100-25	125-25	125-31	150-31	150-35	200-35	250-35
Supporto Bearing housing	[mm]	25	25	25	35	35	35	35	35	50	35	35	50	50	65	65	65
X	[mm]	100	100	100	100	100	140	140	140	140	140	140	140	200	200	200	200

ACCOPIAMENTO POTENZA - POLARITA' / GRANDEZZA MOTORE POWER-POLARITY / MOTOR SIZE COUPLING																												
2POLI	Grand.	71	80	80	90S	90L	100L	112M	132S	132M	160M	160M	160L	180M	200L	200L	225M	250M	280S	280M	315S	315M						
	kW	0,55	0,75	1,1	1,5	2,2	3	4	5,5	7,5	9,2	11	15	18,5	22	30	37	45	55	75	90	110	132					
4POLI	Grand.	80	80	90S	90L	100L	100L	112M	132S	132M	160M	160L	180M	180L	200L	225S	225M	250M	280S	280M	315S	315M	315M	315L	355L	355L	355L	
	kW	0,55	0,75	1,1	1,5	2,2	3	4	5,5	7,5	9,2	11	15	18,5	22	30	37	45	55	75	90	110	132	160	200	250	315	355
6POLI	Grand.	80	90S	90L	100L	112M	132S	132M	160M	160L	180L	200L	200L	225L	250M	280S	280M	315S	315M	315M	315M							
	kW	0,55	0,75	1,1	1,5	2,2	3	4	5,5	7,5	11	15	18,5	22	30	37	45	55	75	90	110	132						

Pompa tipo Pump size	Grandezza motore Motor size	Base - Base plate	DIMENSIONI - DIMENSIONS [mm]																		Peso weight ^(a) [kg]	
			Dna	Dnm	a	f	h3	h2	L1	L2	L3	B2	B3	w	d	b	c1	c2	I1	I2		T ^(a)
32-16	80	2	50	32	48	418	252	160	1000	170	660	400	360	60	19	30	0	52	240	190	860	86
	90S	2	50	32	48	418	252	160	1000	170	660	400	360	60	19	30	0	42	240	190	880	89
	90L	2	50	32	48	418	252	160	1000	170	660	400	360	60	19	30	0	42	240	190	905	92
	100L	2	50	32	48	418	252	160	1000	170	660	400	360	60	19	30	0	32	240	190	955	97
	112M	2	50	32	48	418	252	160	1000	170	660	400	360	60	19	30	0	20	240	190	971	108
	132S	2	50	32	48	418	252	160	1000	170	660	400	360	60	19	30	0	0	240	190	1045	118
132M	2	50	32	48	418	252	160	1000	170	660	400	360	60	19	30	0	0	240	190	1083	135	
32-20	80	2	50	32	48	418	280	180	1000	170	660	400	360	60	19	30	0	80	240	190	860	93
	90S	2	50	32	48	418	280	180	1000	170	660	400	360	60	19	30	0	70	240	190	880	95
	90L	2	50	32	48	418	280	180	1000	170	660	400	360	60	19	30	0	70	240	190	905	98
	100L	2	50	32	48	418	280	180	1000	170	660	400	360	60	19	30	0	60	240	190	955	104
	112M	2	50	32	48	418	280	180	1000	170	660	400	360	60	19	30	0	48	240	190	971	114
	132S	2	50	32	48	418	280	180	1000	170	660	400	360	60	19	30	0	28	240	190	1045	124
	132M	2	50	32	48	418	280	180	1000	170	660	400	360	60	19	30	0	28	240	190	1083	141
	160M	3	50	32	48	418	280	180	1200	205	790	440	400	60	19	30	0	0	240	190	1180	211
160L	3	50	32	48	418	280	180	1200	205	790	440	400	60	19	30	0	0	240	190	1225	225	
50-16	90S	2	65	50	55	427	280	180	1000	170	660	400	360	60	19	30	0	70	265	212	896	92
	90L	2	65	50	55	427	280	180	1000	170	660	400	360	60	19	30	0	70	265	212	921	95
	100L	2	65	50	55	427	280	180	1000	170	660	400	360	60	19	30	0	60	265	212	971	101
	112M	2	65	50	55	427	280	180	1000	170	660	400	360	60	19	30	0	48	265	212	987	111
	132S	2	65	50	55	427	280	180	1000	170	660	400	360	60	19	30	0	28	265	212	1061	121
	132M	2	65	50	55	427	280	180	1000	170	660	400	360	60	19	30	0	28	265	212	1099	138
	160M	3	65	50	55	427	280	180	1200	205	790	440	400	60	19	30	0	0	265	212	1196	208
	160L	3	65	50	55	427	280	180	1200	205	790	440	400	60	19	30	0	0	265	212	1241	222
50-20	100L	2	65	50	55	532	280	200	1000	170	660	400	360	60	19	30	0	60	265	212	1076	116
	112M	2	65	50	55	532	280	200	1000	170	660	400	360	60	19	30	0	48	265	212	1092	126
	132S	3	65	50	55	532	280	200	1200	205	790	440	400	60	19	30	0	28	265	212	1166	147
	132M	3	65	50	55	532	280	200	1200	205	790	440	400	60	19	30	0	28	265	212	1204	164
	160M	3	65	50	55	532	280	200	1200	205	790	440	400	60	19	30	0	0	265	212	1301	223
	160L	3	65	50	55	532	280	200	1200	205	790	440	400	60	19	30	0	0	265	212	1346	237
50-25	90S	2	65	50	55	534	300	225	1000	170	660	400	360	75	19	30	0	90	320	250	1003	115
	90L	2	65	50	55	534	300	225	1000	170	660	400	360	75	19	30	0	90	320	250	1028	118
	100L	2	65	50	55	534	300	225	1000	170	660	400	360	75	19	30	0	80	320	250	1078	124
	112M	3	65	50	55	534	300	225	1200	205	790	440	400	75	19	30	0	68	320	250	1094	145
	132S	3	65	50	55	534	300	225	1200	205	790	440	400	75	19	30	0	48	320	250	1168	155
	132M	3	65	50	55	534	300	225	1200	205	790	440	400	75	19	30	0	48	320	250	1206	172
	160M	3	65	50	55	534	300	225	1200	205	790	440	400	75	19	30	0	20	320	250	1303	231
	160L	3	65	50	55	534	300	225	1200	205	790	440	400	75	19	30	0	20	320	250	1348	245
65-20	100L	3	80	65	66	542	300	225	1200	205	790	440	400	75	19	30	0	80	320	250	1137	133
	112M	3	80	65	66	542	300	225	1200	205	790	440	400	75	19	30	0	68	320	250	1153	144
	132S	3	80	65	66	542	300	225	1200	205	790	440	400	75	19	30	0	48	320	250	1227	154
	132M	3	80	65	66	542	300	225	1200	205	790	440	400	75	19	30	0	48	320	250	1265	171
	160M	4	80	65	66	542	300	225	1500	245	1010	480	440	75	19	30	0	20	320	250	1362	240
	160L	4	80	65	66	542	300	225	1500	245	1010	480	440	75	19	30	0	20	320	250	1407	254
80-20(S)	100L	3	100	80	70	550	300	250	1200	205	790	440	400	75	19	30	0	80	345	280	1149	136
	112M	3	100	80	70	550	300	250	1200	205	790	440	400	75	19	30	0	68	345	280	1165	146
	132S	3	100	80	70	550	300	250	1200	205	790	440	400	75	19	30	0	48	345	280	1239	156
	132M	3	100	80	70	550	300	250	1200	205	790	440	400	75	19	30	0	48	345	280	1277	173
	160M	4	100	80	70	550	300	250	1500	245	1010	480	440	75	19	30	0	20	345	280	1374	242
	160L	4	100	80	70	550	300	250	1500	245	1010	480	440	75	19	30	0	20	345	280	1419	256
80-25	112M	5	100	80	75	575	345	280	1200	205	790	505	465	90	19	30	0	113	400	315	1195	163
	132S	5	100	80	75	575	345	280	1200	205	790	505	465	90	19	30	0	93	400	315	1269	173
	132M	5	100	80	75	575	345	280	1200	205	790	505	465	90	19	30	0	93	400	315	1307	190
	160M	7	100	80	75	575	390	280	1450	235	980	560	510	90	24	13	25	90	400	315	1404	258
	160L	7	100	80	75	575	390	280	1450	235	980	560	510	90	24	13	25	90	400	315	1449	272
	180M	7	100	80	75	575	390	280	1450	235	980	560	510	90	24	13	25	70	400	315	1484	304
80-31	180L	7	100	80	75	575	390	280	1450	235	980	560	510	90	24	13	25	70	400	315	1524	322
	132S	5	100	80	90	587	370	315	1200	205	790	505	465	90	19	30	0	118	400	315	1296	223
	132M	5	100	80	90	587	370	315	1200	205	790	505	465	90	19	30	0	118	400	315	1334	240
	160M	7	100	80	90	587	415	315	1450	235	980	560	510	90	24	13	25	115	400	315	1431	308
	160L	7	100	80	90	587	415	315	1450	235	980	560	510	90	24	13	25	115	400	315	1476	322
	180M	7	100	80	90	587	415	315	1450	235	980	560	510	90	24	13	25	95	400	315	1511	354
	180L	7	100	80	90	587	415	315	1450	235	980	560	510	90	24	13	25	95	400	315	1551	372
	200L	7	100	80	90	587	415	315	1450	235	980	560	510	90	24	13	25	75	400	315	1586	435
	225S	8	100	80	90	587	415	315	1590	235	1120	560	510	90	24	13	25	50	400	315	1631	451
225M	8	100	80	90	587	415	315	1590	235	1120	560	510	90	24	13	25	50	400	315	1656	483	

Quote e pesi suscettibili di variazione.
Dimensions and weights are subject to variations.

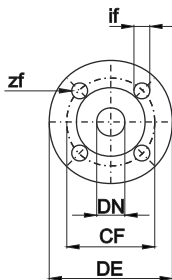
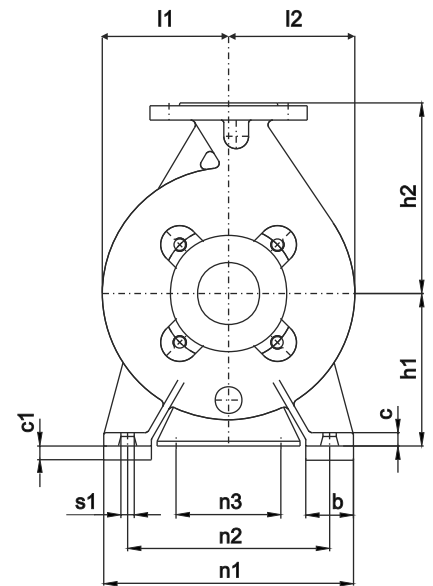
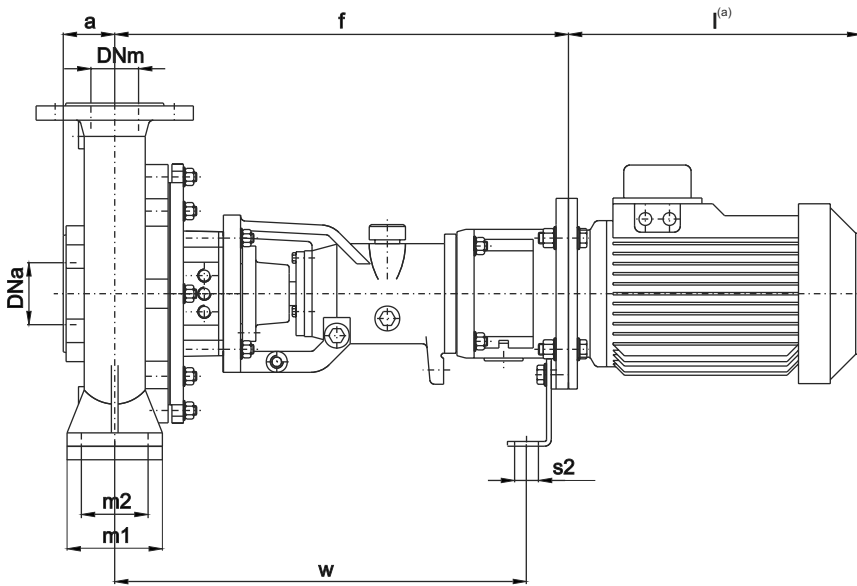
^(a)Quota indicativa può variare in funzione della marca del motore
Not binding dimension that can change according to motor maker

Pompa tipo Pump size	Grandezza motore Motor size	Base - Base plate	DIMENSIONI - DIMENSIONS [mm]																		Peso weight ^(a) [kg]	
			Dna	Dnm	a	f	h3	h2	L1	L2	L3	B2	B3	w	d	b	c1	c2	l1	l2		T ^(a)
100-25	132S	5	125	100	90	587	345	280	1200	205	790	505	465	90	19	30	0	93	400	315	1296	188
	132M	5	125	100	90	587	345	280	1200	205	790	505	465	90	19	30	0	93	400	315	1334	205
	160M	7	125	100	90	587	390	280	1450	235	980	560	510	90	24	13	25	90	400	315	1431	273
	160L	7	125	100	90	587	390	280	1450	235	980	560	510	90	24	13	25	90	400	315	1476	287
	180M	7	125	100	90	587	390	280	1450	235	980	560	510	90	24	13	25	70	400	315	1511	319
	180L	7	125	100	90	587	390	280	1450	235	980	560	510	90	24	13	25	70	400	315	1551	337
200L	7	125	100	90	587	390	280	1450	235	980	560	510	90	24	13	25	50	400	315	1586	400	
125-25	132S	6	150	125	112	597	415	355	1300	215	870	510	460	90	24	13	25	143	400	315	1328	212
	132M	6	150	125	112	597	415	355	1300	215	870	510	460	90	24	13	25	143	400	315	1366	229
	160M	7	150	125	112	597	415	355	1450	235	980	560	510	90	24	13	25	115	400	315	1463	295
	160L	7	150	125	112	597	415	355	1450	235	980	560	510	90	24	13	25	115	400	315	1508	309
	180M	7	150	125	112	597	415	355	1450	235	980	560	510	90	24	13	25	95	400	315	1543	341
	180L	7	150	125	112	597	415	355	1450	235	980	560	510	90	24	13	25	95	400	315	1583	359
200L	7	150	125	112	597	415	355	1450	235	980	560	510	90	24	13	25	75	400	315	1618	422	
125-31	132M	6	150	125	112	600	445	355	1300	215	870	510	460	110	24	13	25	173	500	400	1369	262
	160M	7	150	125	112	600	445	355	1450	235	980	560	510	110	24	13	25	145	500	400	1466	329
	160L	7	150	125	112	600	445	355	1450	235	980	560	510	110	24	13	25	145	500	400	1511	343
	180M	7	150	125	112	600	445	355	1450	235	980	560	510	110	24	13	25	125	500	400	1546	375
	180L	7	150	125	112	600	445	355	1450	235	980	560	510	110	24	13	25	125	500	400	1586	393
	200L	7	150	125	112	600	445	355	1450	235	980	560	510	110	24	13	25	105	500	400	1621	456
	225S	8	150	125	112	600	445	355	1590	235	1120	560	510	110	24	13	25	80	500	400	1666	472
	225M	8	150	125	112	600	445	355	1590	235	1120	560	510	110	24	13	25	80	500	400	1691	504
250M	8	150	125	112	600	445	355	1590	235	1120	560	510	110	24	13	25	55	500	400	1771	602	
150-31	160M	7	200	150	120	597	480	400	1450	235	980	560	510	110	24	13	25	180	550	450	1531	354
	160L	7	200	150	120	597	480	400	1450	235	980	560	510	110	24	13	25	180	550	450	1576	368
	180M	7	200	150	120	597	480	400	1450	235	980	560	510	110	24	13	25	160	550	450	1611	400
	180L	7	200	150	120	597	480	400	1450	235	980	560	510	110	24	13	25	160	550	450	1651	418
	200L	8	200	150	120	597	480	400	1590	235	1120	560	510	110	24	13	25	140	550	450	1686	485
	225S	8	200	150	120	597	480	400	1590	235	1120	560	510	110	24	13	25	115	550	450	1731	498
	225M	8	200	150	120	597	480	400	1590	235	1120	560	510	110	24	13	25	115	550	450	1756	530
	250M	8	200	150	120	597	480	400	1590	235	1120	560	510	110	24	13	25	90	550	450	1836	628
	280S	9	200	150	120	597	520	400	1900	260	1380	610	560	110	26	15	25	60	550	450	1876	787
	280M	9	200	150	120	597	520	400	1900	260	1380	610	560	110	26	15	25	60	550	450	1961	883
315S	9	200	150	120	597	520	400	1900	260	1380	610	560	110	26	15	25	25	550	450	2136	1187	
150-35	180L	8	200	150	200	752	520	400	1590	235	1120	560	510	110	24	13	25	160	550	450	1886	510
	200L	9	200	150	200	752	520	400	1900	260	1380	610	560	110	26	15	25	140	550	450	1921	610
	225S	9	200	150	200	752	520	400	1900	260	1380	610	560	110	26	15	25	115	550	450	1966	623
	225M	9	200	150	200	752	520	400	1900	260	1380	610	560	110	26	15	25	115	550	450	1991	655
	250M	9	200	150	200	752	520	400	1900	260	1380	610	560	110	26	15	25	90	550	450	2071	753
	280S	9	200	150	200	752	520	400	1900	260	1380	610	560	110	26	15	25	60	550	450	2111	875
	280M	9	200	150	200	752	520	400	1900	260	1380	610	560	110	26	15	25	60	550	450	2196	971
	315S	9	200	150	200	752	520	400	1900	260	1380	610	560	110	26	15	25	25	550	450	2371	1275
	315M	10	200	150	200	752	520	400	2000	260	1480	710	660	110	26	15	25	25	550	450	2481	1435
200-35	200L	9	250	200	250	765	560	450	1900	260	1380	610	560	110	26	15	25	180	550	450	1984	651
	225S	9	250	200	250	765	560	450	1900	260	1380	610	560	110	26	15	25	155	550	450	2029	664
	225M	9	250	200	250	765	560	450	1900	260	1380	610	560	110	26	15	25	155	550	450	2054	696
	250M	9	250	200	250	765	560	450	1900	260	1380	610	560	110	26	15	25	130	550	450	2134	794
	280S	9	250	200	250	765	560	450	1900	260	1380	610	560	110	26	15	25	100	550	450	2174	916
	280M	9	250	200	250	765	560	450	1900	260	1380	610	560	110	26	15	25	100	550	450	2259	1012
	315S	9	250	200	250	765	560	450	1900	260	1380	610	560	110	26	15	25	65	550	450	2434	1316
	315M	10	250	200	250	765	560	450	2000	260	1480	710	660	110	26	15	25	65	550	450	2544	1476
315L	10	250	200	250	765	560	450	2000	260	1480	710	660	110	26	15	25	65	550	450	2544	1548	
250-35	200L	10	300	250	300	779	560	500	2000	260	1480	710	660	140	26	15	25	180	690	560	2048	718
	225S	10	300	250	300	779	560	500	2000	260	1480	710	660	140	26	15	25	155	690	560	2093	731
	225M	10	300	250	300	779	560	500	2000	260	1480	710	660	140	26	15	25	155	690	560	2118	763
	250M	10	300	250	300	779	560	500	2000	260	1480	710	660	140	26	15	25	130	690	560	2198	861
	280S	10	300	250	300	779	560	500	2000	260	1480	710	660	140	26	15	25	100	690	560	2238	983
	280M	10	300	250	300	779	560	500	2000	260	1480	710	660	140	26	15	25	100	690	560	2323	1079
	315S	10	300	250	300	779	560	500	2000	260	1480	710	660	140	26	15	25	65	690	560	2498	1383
	315M	11	300	250	300	779	600	500	2300	350	1600	820	750	140	30	18	25	65	690	560	2608	1598
	315L	11	300	250	300	779	600	500	2300	350	1600	820	750	140	30	18	25	65	690	560	2608	1670
355L	11	300	250	300	779	600	500	2300	350	1600	820	750	140	30	18	25	25	690	560	2873	2442	

Quote e pesi suscettibili di variazione.
Dimensions and weights are subject to variations.

^(a)Quota indicativa può variare in funzione della marca del motore
Not binding dimension that can change according to motor maker

N.B.: Le dimensioni riferite a motori con carcassa superiore a 315MA (grandezze non normalizzate) potrebbero variare significativamente.
NOTE: Dimensions referred to motor sizes bigger than 315MA (not normalized state) could change considerably.



Dimensioni Flange - Dimensions Flanges EN 1092-1/2 PN 10

DNa - DNm	32	50	65	80	100	125	150
CF	100	125	145	160	180	210	240
DE	140	165	185	200	220	250	285
if	18	18	18	18	18	18	23
zf	4	4	4	8	8	8	8

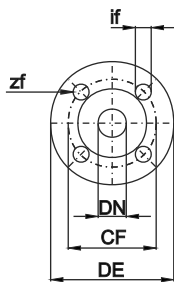
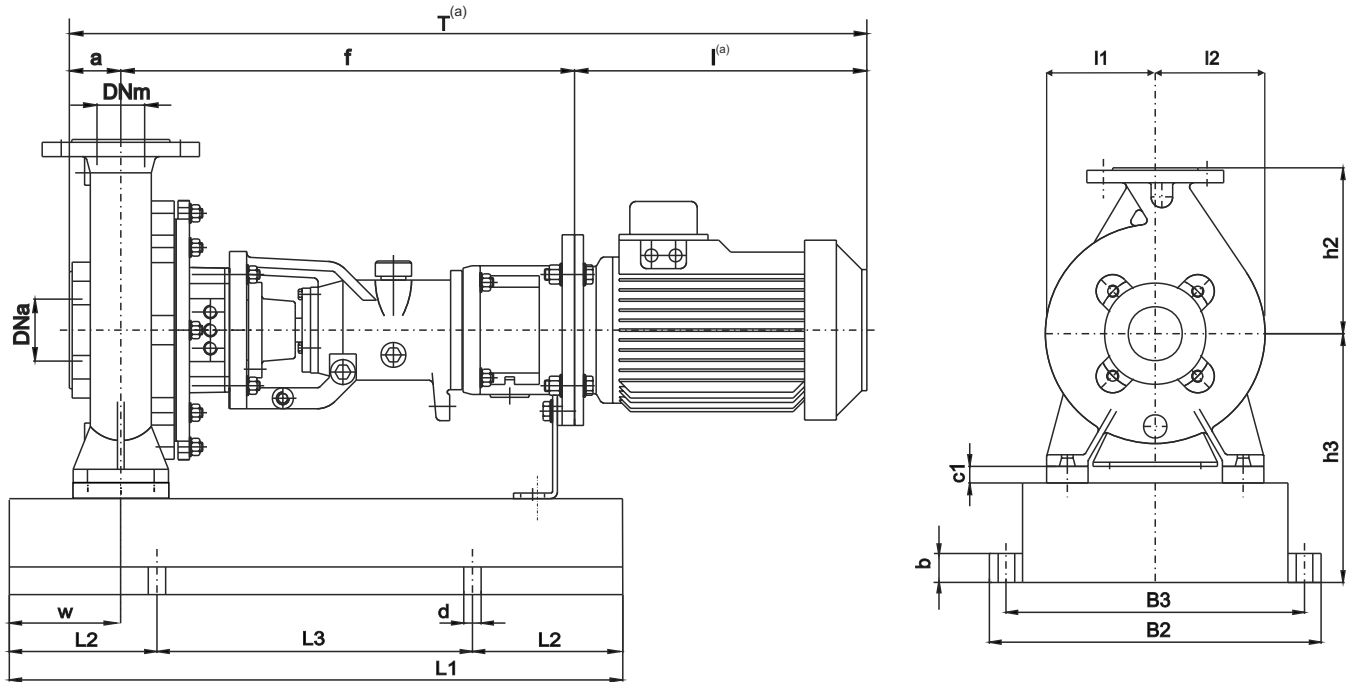
MOTORE ELETTRICO - ELECTRIC MOTOR

Grandezza Size IEC	Potenza in [kW] Power in [kW]			L ^(a) [mm]	Peso Weight ^(a) [kg]
	2 Poli 2 Poles	4 Poli 4 Poles	6 Poli 6 Poles		
	80	0.75	0.55		
80	1.1	0.75	0.55	232	10
90	1.5	1.1	0.75	270	13
90	2.2	1.5	1.1	270	16
100	3	2.2	1.5	298	21
100	-	3	-	298	23
112	4	4	2.2	312	30
132	5.5	5.5	3	381	40
132	7.5	7.5	4	381	50
132	9.2	9.2	5.5	381	50
160	11	11	7.5	486	76
160	15	15	11	486	85
160	18.5	-	-	486	95
180	22	18.5	15	576	130
180	-	22	-	576	145

Pompa tipo Pump size	Grandezza motore Motor size	DIMENSIONI - DIMENSIONS [mm]																		Peso weight ^(b) [kg]	
		Dna	Dnm	a	f	h1	h2	b	m1	m2	n1	n2	n3	w	s1	s2	c	c1	l1		l2
32-16	80	50	32	48	472	132	160	50	100	70	240	190	110	427	14	14	14	0	114	114	40
	90	50	32	48	472	132	160	50	100	70	240	190	110	427	14	14	14	0	114	114	40
	100	50	32	48	489	132	160	50	100	70	240	190	110	427	14	14	14	0	114	114	47
	112	50	32	48	489	132	160	50	100	70	240	190	110	427	14	14	14	0	114	114	47
	132	50	32	48	512	132	160	50	100	70	240	190	110	467	14	14	14	25	114	114	45
32-20	80	50	32	48	472	160	180	50	100	70	240	190	110	427	14	14	14	0	136	136	47
	90	50	32	48	472	160	180	50	100	70	240	190	110	427	14	14	14	0	136	136	47
	100	50	32	48	489	160	180	50	100	70	240	190	110	427	14	14	14	0	136	136	54
	112	50	32	48	489	160	180	50	100	70	240	190	110	427	14	14	14	0	136	136	54
	132	50	32	48	512	160	180	50	100	70	240	190	110	467	14	14	14	0	136	136	52
50-16	90	65	50	55	481	160	180	50	100	70	265	212	110	437	14	14	14	0	122	122	43
	100	65	50	55	498	160	180	50	100	70	265	212	110	437	14	14	14	0	122	122	50
	112	65	50	55	498	160	180	50	100	70	265	212	110	437	14	14	14	0	122	122	50
	132	65	50	55	521	160	180	50	100	70	265	212	110	477	14	14	14	0	122	122	48
	160	65	50	55	551	160	180	50	100	70	265	212	110	498	14	14	14	0	122	122	55
50-20	100	65	50	55	599	160	200	50	100	70	265	212	110	549	14	14	14	0	141	141	62
	112	65	50	55	599	160	200	50	100	70	265	212	110	549	14	14	14	0	141	141	62
	132	65	50	55	619	160	200	50	100	70	265	212	110	576	14	14	14	0	141	141	64
	160	65	50	55	649	160	200	50	100	70	265	212	110	595	14	14	14	20	141	141	71
50-25	112	65	50	55	601	180	225	65	125	95	320	250	110	551	14	14	16	0	175	175	70
	132	65	50	55	621	180	225	65	125	95	320	250	110	578	14	14	16	0	175	175	72
	160	65	50	55	651	180	225	65	125	95	320	250	110	597	14	14	16	0	175	175	78
65-20	100	80	65	66	609	180	225	65	125	95	320	250	110	559	14	14	16	0	151	151	69
	112	80	65	66	609	180	225	65	125	95	320	250	110	559	14	14	16	0	151	151	69
	132	80	65	66	629	180	225	65	125	95	320	250	110	586	14	14	16	0	151	151	71
	160	80	65	66	659	180	225	65	125	95	320	250	110	605	14	14	16	0	151	151	77
80-20(S)	112	100	80	70	617	180	250	65	125	95	345	280	110	568	14	14	16	0	159	159	71
	132	100	80	70	637	180	250	65	125	95	345	280	110	595	14	14	16	0	159	159	73
	160	100	80	70	667	180	250	65	125	95	345	280	110	614	14	14	16	0	159	159	80
	180	100	80	70	667	180	250	65	125	95	345	280	110	614	14	14	16	0	159	159	80
80-25	112	100	80	75	642	225	280	80	160	120	400	315	110	594	18	14	18	0	176	176	87
	132	100	80	75	662	225	280	80	160	120	400	315	110	621	18	14	18	0	176	176	89
	160	100	80	75	692	225	280	80	160	120	400	315	110	640	18	14	18	0	176	176	96
	180	100	80	75	692	225	280	80	160	120	400	315	110	640	18	14	18	0	176	176	96
80-31	112	100	80	90	658	250	315	80	160	120	400	315	110	609	18	14	18	0	227	205	144
	132	100	80	90	678	250	315	80	160	120	400	315	110	637	18	14	18	0	227	205	146
	160	100	80	90	708	250	315	80	160	120	400	315	110	652	18	14	18	0	227	205	153
	180	100	80	90	708	250	315	80	160	120	400	315	110	652	18	14	18	0	227	205	153
100-25	112	125	100	90	654	225	280	80	160	120	400	315	110	606	18	14	18	0	216	183	102
	132	125	100	90	674	225	280	80	160	120	400	315	110	633	18	14	18	0	216	183	104
	160	125	100	90	704	225	280	80	160	120	400	315	110	652	18	14	18	0	216	183	111
	180	125	100	90	704	225	280	80	160	120	400	315	110	652	18	14	18	0	216	183	111
125-25	112	150	125	112	664	250	355	100	160	120	400	315	110	618	18	14	18	0	254	208	124
	132	150	125	112	684	250	355	100	160	120	400	315	110	645	18	14	18	0	254	208	126
	160	150	125	112	714	250	355	100	160	120	400	315	110	664	18	14	18	0	254	208	133
	180	150	125	112	714	250	355	100	160	120	400	315	110	664	18	14	18	0	254	208	133
125-31	112	150	125	112	671	280	355	100	200	150	500	400	110	621	23	14	20	0	256	223	165
	132	150	125	112	691	280	355	100	200	150	500	400	110	649	23	14	20	0	256	223	167
	160	150	125	112	721	280	355	100	200	150	500	400	110	664	23	14	20	0	256	223	174
	180	150	125	112	721	280	355	100	200	150	500	400	110	664	23	14	20	0	256	223	174
150-31	112	200	150	120	668	315	400	100	200	150	550	450	110	616	24	14	22	0	316	243	191
	132	200	150	120	688	315	400	100	200	150	550	450	110	644	24	14	22	0	316	243	193
	160	200	150	120	718	315	400	100	200	150	550	450	110	659	24	14	22	0	316	243	199
	180	200	150	120	718	315	400	100	200	150	550	450	110	659	24	14	22	0	316	243	199

Quote e pesi suscettibili di variazione.
Dimensions and weights are subject to variations.

^(b)Peso senza motore elettrico
Weight without electric motor



Dimensioni Flange - Dimensions Flanges EN 1092-1/2 PN 10							
DNa - DNm	32	50	65	80	100	125	150
CF	100	125	145	160	180	210	240
DE	140	165	185	200	220	250	285
if	18	18	18	18	18	18	23
zf	4	4	4	8	8	8	8

MOTORE ELETTRICO - ELECTRIC MOTOR					
Grandezza Size IEC	Potenza in [kW] Power in [kW]			L ^(a) [mm]	Peso Weight ^(a) [kg]
	2 Poli 2 Poles	4 Poli 4 Poles	6 Poli 6 Poles		
80	0.75	0.55	0.37	232	9
80	1.1	0.75	0.55	232	10
90	1.5	1.1	0.75	270	13
90	2.2	1.5	1.1	270	16
100	3	2.2	1.5	298	21
100	-	3	-	298	23
112	4	4	2.2	312	30
132	5.5	5.5	3	381	40
132	7.5	7.5	4	381	50
132	9.2	9.2	5.5	381	50
160	11	11	7.5	486	76
160	15	15	11	486	85
160	18.5	-	-	486	95
180	22	18.5	15	576	130
180	-	22	-	576	145

Quote e pesi suscettibili di variazione.
Dimensions and weights are subject to variations.

^(a)Quota indicativa può variare in funzione della marca del motore
Not binding dimension that can change according to motor brand

Ingombri lanternata su base

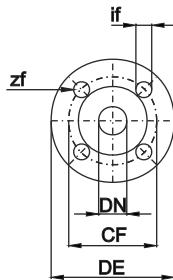
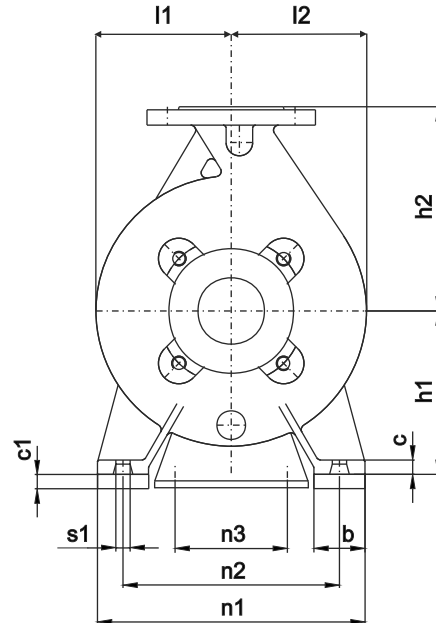
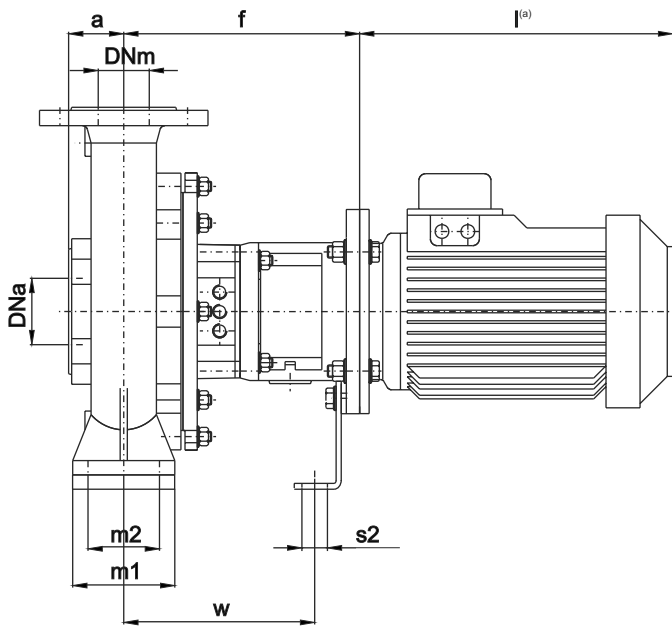
Lantern bracket pump on base overall dimensions

Pompa tipo Pump size	Grandezza motore Motor size	Base Base plate	DIMENSIONI - DIMENSIONS [mm]																	Peso weight ^(b) [kg]	
			Dna	Dnm	a	f	h2	h3	L1	L2	L3	B2	B3	w	d	b	c1	l1	l2		T ^(a)
32-16	80	G1	50	32	48	472	160	202	650	100	450	350	320	60	14	4	0	114	114	814	48
	90	G1	50	32	48	472	160	202	650	100	450	350	320	60	14	4	0	114	114	859	48
	100	G1	50	32	48	489	160	202	650	100	450	350	320	60	14	4	0	114	114	926	55
	112	G1	50	32	48	489	160	202	650	100	450	350	320	60	14	4	0	114	114	942	55
132	G1	50	32	48	512	160	202	650	100	450	350	320	60	14	4	25	114	114	1077	53	
32-20	80	G1	50	32	48	472	180	230	650	100	450	350	320	60	14	4	0	136	136	814	55
	90	G1	50	32	48	472	180	230	650	100	450	350	320	60	14	4	0	136	136	859	55
	100	G1	50	32	48	489	180	230	650	100	450	350	320	60	14	4	0	136	136	926	62
	112	G1	50	32	48	489	180	230	650	100	450	350	320	60	14	4	0	136	136	942	62
132	G1	50	32	48	512	180	230	650	100	450	350	320	60	14	4	0	136	136	1077	60	
50-16	90	G1	65	50	55	481	180	230	650	100	450	350	320	60	14	4	0	122	122	875	52
	100	G1	65	50	55	498	180	230	650	100	450	350	320	60	14	4	0	122	122	942	59
	112	G1	65	50	55	498	180	230	650	100	450	350	320	60	14	4	0	122	122	958	59
	132	G1	65	50	55	521	180	230	650	100	450	350	320	60	14	4	0	122	122	1093	57
50-20	100	G1	65	50	55	551	180	230	650	100	450	350	320	60	14	4	20	122	122	1265	63
	112	G2	65	50	55	599	200	230	850	150	550	510	460	60	16	6	0	141	141	1043	82
	132	G2	65	50	55	619	200	230	850	150	550	510	460	60	16	6	0	141	141	1191	84
	160	G2	65	50	55	649	200	230	850	150	550	510	460	60	16	6	20	141	141	1363	90
50-25	112	G2	65	50	55	601	225	250	850	150	550	510	460	75	16	6	0	175	175	1061	90
	132	G2	65	50	55	621	225	250	850	150	550	510	460	75	16	6	0	175	175	1193	92
	160	G2	65	50	55	651	225	250	850	150	550	510	460	75	16	6	0	175	175	1365	98
65-20	100	G2	80	65	66	609	225	250	850	150	550	510	460	75	16	6	0	151	151	1064	89
	112	G2	80	65	66	609	225	250	850	150	550	510	460	75	16	6	0	151	151	1080	89
	132	G2	80	65	66	629	225	250	850	150	550	510	460	75	16	6	0	151	151	1212	91
	160	G2	80	65	66	659	225	250	850	150	550	510	460	75	16	6	0	151	151	1384	97
80-20(S)	112	G2	100	80	70	617	250	250	850	150	550	510	460	75	16	6	0	159	159	1092	91
	132	G2	100	80	70	637	250	250	850	150	550	510	460	75	16	6	0	159	159	1224	93
	160	G2	100	80	70	667	250	250	850	150	550	510	460	75	16	6	0	159	159	1396	100
	180	G2	100	80	70	667	250	250	850	150	550	510	460	75	16	6	0	159	159	1471	100
80-25	112	G2	100	80	75	642	280	295	850	150	550	510	460	90	16	6	0	176	176	1122	107
	132	G2	100	80	75	662	280	295	850	150	550	510	460	90	16	6	0	176	176	1254	109
	160	G2	100	80	75	692	280	295	850	150	550	510	460	90	16	6	0	176	176	1426	116
	180	G2	100	80	75	692	280	295	850	150	550	510	460	90	16	6	0	176	176	1501	116
80-31	112	G3	100	80	90	658	315	350	1000	200	600	650	590	90	20	8	0	227	205	1153	199
	132	G3	100	80	90	678	315	350	1000	200	600	650	590	90	20	8	0	227	205	1285	201
	160	G3	100	80	90	708	315	350	1000	200	600	650	590	90	20	8	0	227	205	1457	208
	180	G3	100	80	90	708	315	350	1000	200	600	650	590	90	20	8	0	227	205	1532	208
100-25	112	G2	125	100	90	654	280	295	850	150	550	510	460	90	16	6	0	216	183	1149	122
	132	G2	125	100	90	674	280	295	850	150	550	510	460	90	16	6	0	216	183	1281	124
	160	G2	125	100	90	704	280	295	850	150	550	510	460	90	16	6	0	216	183	1453	131
	180	G2	125	100	90	704	280	295	850	150	550	510	460	90	16	6	0	216	183	1528	131
125-25	112	G2	150	125	112	664	355	320	850	150	550	510	460	90	16	6	0	254	208	1181	144
	132	G2	150	125	112	684	355	320	850	150	550	510	460	90	16	6	0	254	208	1313	146
	160	G2	150	125	112	714	355	320	850	150	550	510	460	90	16	6	0	254	208	1485	153
	180	G2	150	125	112	714	355	320	850	150	550	510	460	90	16	6	0	254	208	1560	153
125-31	112	G3	150	125	112	671	355	380	1000	200	600	650	590	110	20	8	0	256	223	1188	220
	132	G3	150	125	112	691	355	380	1000	200	600	650	590	110	20	8	0	256	223	1320	222
	160	G3	150	125	112	721	355	380	1000	200	600	650	590	110	20	8	0	256	223	1492	228
	180	G3	150	125	112	721	355	380	1000	200	600	650	590	110	20	8	0	256	223	1567	228
150-31	112	G3	200	150	120	668	400	415	1000	200	600	650	590	110	20	8	0	316	243	1193	245
	132	G3	200	150	120	688	400	415	1000	200	600	650	590	110	20	8	0	316	243	1325	247
	160	G3	200	150	120	718	400	415	1000	200	600	650	590	110	20	8	0	316	243	1497	254
	180	G3	200	150	120	718	400	415	1000	200	600	650	590	110	20	8	0	316	243	1572	254

Quote e pesi suscettibili di variazione.
Dimensions and weights are subject to variations.

^(a)Quota indicativa può variare in funzione della marca del motore
Not binding dimension that can change according to motor brand

^(b)Peso senza motore elettrico
Weight without electric motor


Dimensioni Flange -Dimensions Flanges EN 1092-1/2 PN 10

DNa - DNm	32	50	65	80	100	125	150
CF	100	125	145	160	180	210	240
DE	140	165	185	200	220	250	285
if	18	18	18	18	18	18	23
zf	4	4	4	8	8	8	8

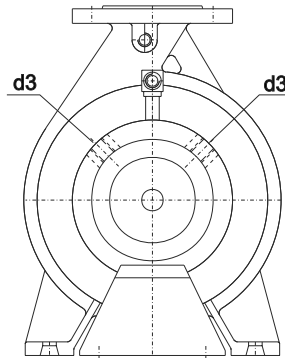
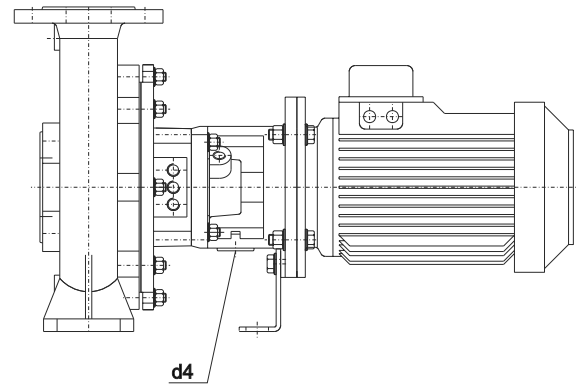
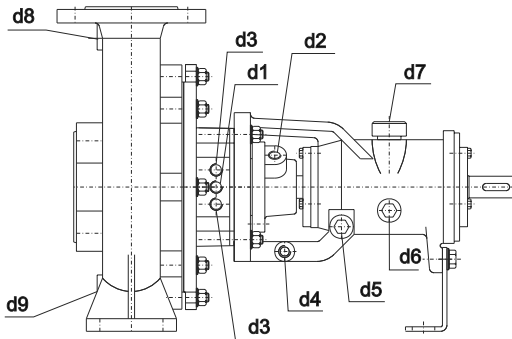
MOTORE ELETTRICO - ELECTRIC MOTOR

Grandezza Size IEC	Potenza in [kW] Power in [kW]			L ^(a) [mm]	Peso Weight ^(a) [kg]
	2 Poli 2 Poles	4 Poli 4 Poles	6 Poli 6 Poles		
80	0.75	0.55	0.37	232	9
80	1.1	0.75	0.55	232	10
90	1.5	1.1	0.75	270	13
90	2.2	1.5	1.1	270	16
100	3	2.2	1.5	298	21
100	-	3	-	298	23
112	4	4	2.2	312	30
132	5.5	5.5	3	381	40
132	7.5	7.5	4	381	50
132	9.2	9.2	5.5	381	50
160	11	11	7.5	486	76
160	15	15	11	486	85
160	18.5	-	-	486	95
180	22	18.5	15	576	130
180	-	22	-	576	145

Pompa tipo - Pump size	Grandezza motore - Motor size	DIMENSIONI - DIMENSIONS [mm]																		Peso weight ^(a) [kg]	
		Dna	Dnm	a	f	h1	h2	b	m1	m2	n1	n2	n3	w	s1	s2	c	c1	l1		l2
32-16	80	50	32	48	227	132	160	50	100	70	240	190	110	182	14	14	14	0	114	114	40
	90	50	32	48	227	132	160	50	100	70	240	190	110	182	14	14	14	0	114	114	40
	100	50	32	48	244	132	160	50	100	70	240	190	110	182	14	14	14	0	114	114	47
	112	50	32	48	244	132	160	50	100	70	240	190	110	182	14	14	14	0	114	114	47
	132	50	32	48	267	132	160	50	100	70	240	190	110	222	14	14	14	25	114	114	45
32-20	80	50	32	48	227	160	180	50	100	70	240	190	110	182	14	14	14	0	135,5	135,5	47
	90	50	32	48	227	160	180	50	100	70	240	190	110	182	14	14	14	0	135,5	135,5	47
	100	50	32	48	244	160	180	50	100	70	240	190	110	182	14	14	14	0	135,5	135,5	54
	112	50	32	48	244	160	180	50	100	70	240	190	110	182	14	14	14	0	135,5	135,5	54
	132	50	32	48	267	160	180	50	100	70	240	190	110	222	14	14	14	0	135,5	135,5	52
50-16	90	65	50	55	236	160	180	50	100	70	265	212	110	192	14	14	14	0	121,5	121,5	43
	100	65	50	55	253	160	180	50	100	70	265	212	110	192	14	14	14	0	121,5	121,5	50
	112	65	50	55	253	160	180	50	100	70	265	212	110	192	14	14	14	0	121,5	121,5	50
	132	65	50	55	276	160	180	50	100	70	265	212	110	232	14	14	14	0	121,5	121,5	48
	160	65	50	55	306	160	180	50	100	70	265	212	110	253	14	14	14	0	121,5	121,5	55
50-20	100	65	50	55	284	160	200	50	100	70	265	212	110	234	14	14	14	0	141	141	62
	112	65	50	55	284	160	200	50	100	70	265	212	110	234	14	14	14	0	141	141	62
	132	65	50	55	304	160	200	50	100	70	265	212	110	261	14	14	14	0	141	141	64
	160	65	50	55	334	160	200	50	100	70	265	212	110	280	14	14	14	20	141	141	71
50-25	112	65	50	55	286	180	225	65	125	95	320	250	110	236	14	14	16	0	175	175	70
	132	65	50	55	306	180	225	65	125	95	320	250	110	263	14	14	16	0	175	175	72
	160	65	50	55	336	180	225	65	125	95	320	250	110	282	14	14	16	0	175	175	78
65-20	100	80	65	66	294	180	225	65	125	95	320	250	110	244	14	14	16	0	150,5	150,5	69
	112	80	65	66	294	180	225	65	125	95	320	250	110	244	14	14	16	0	150,5	150,5	69
	132	80	65	66	314	180	225	65	125	95	320	250	110	271	14	14	16	0	150,5	150,5	71
	160	80	65	66	344	180	225	65	125	95	320	250	110	290	14	14	16	0	150,5	150,5	77
80-20(S)	112	100	80	70	302	180	250	65	125	95	345	280	110	253	14	14	16	0	159	159	71
	132	100	80	70	322	180	250	65	125	95	345	280	110	280	14	14	16	0	159	159	73
	160	100	80	70	352	180	250	65	125	95	345	280	110	299	14	14	16	0	159	159	80
	180	100	80	70	352	180	250	65	125	95	345	280	110	299	14	14	16	0	159	159	80
80-25	112	100	80	75	327	225	280	80	160	120	400	315	110	279	18	14	18	0	176	176	87
	132	100	80	75	347	225	280	80	160	120	400	315	110	306	18	14	18	0	176	176	89
	160	100	80	75	377	225	280	80	160	120	400	315	110	325	18	14	18	0	176	176	96
	180	100	80	75	377	225	280	80	160	120	400	315	110	325	18	14	18	0	176	176	96
100-25	112	125	100	90	339	225	280	80	160	120	400	315	110	291	18	14	18	0	216	183	102
	132	125	100	90	359	225	280	80	160	120	400	315	110	318	18	14	18	0	216	183	104
	160	125	100	90	389	225	280	80	160	120	400	315	110	337	18	14	18	0	216	183	111
	180	125	100	90	389	225	280	80	160	120	400	315	110	337	18	14	18	0	216	183	111
125-25	112	150	125	112	349	250	355	100	160	120	400	315	110	303	18	14	18	0	254	208	124
	132	150	125	112	369	250	355	100	160	120	400	315	110	330	18	14	18	0	254	208	126
	160	150	125	112	399	250	355	100	160	120	400	315	110	349	18	14	18	0	254	208	133
	180	150	125	112	399	250	355	100	160	120	400	315	110	349	18	14	18	0	254	208	133

Quote e pesi suscettibili di variazione.
Dimensions and weights are subject to variations.

^(b)Peso senza motore elettrico
Weight without electric motor



Pompa tipo Pump size	Supporto Bearing housing	CONNESSIONI CONNECTIONS HOLES								
		D1	d2	d3	d4	d5	d6	d7	d8*	d9*
32-16	25	1/4	1/4	1/4	1/4	1/4	1/4	18	1/4	1/4
32-20	25	1/4	1/4	1/4	1/4	1/4	1/4	18	1/4	1/4
50-16	25	1/4	1/4	1/4	1/4	1/4	1/4	18	1/4	1/4
50-20	35	1/4	1/4	3/8	1/4	1/4	1/4	18	1/4	3/8
50-25	35	1/4	1/4	3/8	1/4	1/4	1/4	18	1/4	3/8
65-20	35	1/4	1/4	3/8	1/4	1/4	1/4	18	1/4	3/8
80-20	35	1/4	1/4	3/8	1/4	1/4	1/4	18	1/4	3/8
80-25	35	1/4	1/4	3/8	1/4	1/4	1/4	18	1/4	3/8
80-31	50	1/4	1/4	3/8	1/4	1/4	1/4	18	1/2	1/2
100-25	35	1/4	1/4	3/8	1/4	1/4	1/4	18	1/2	1/2
125-25	35	1/4	1/4	3/8	1/4	1/4	1/4	18	1/2	1/2
125-31	50	1/4	1/4	3/8	1/4	1/4	1/4	18	1/2	1/2
150-31	50	1/4	1/4	3/8	1/4	1/4	1/4	18	1/2	1/2
150-35	65	1/4	1/4	3/8	1/4	1/4	1/4	18	1/2	1/2
200-35	65	1/4	1/4	3/8	1/4	1/4	1/4	18	1/2	3/4
250-35	65	1/4	1/4	3/8	1/4	1/4	1/4	18	1/2	1

d1 = Entrata liquido dispositivo di tenuta.
Flushing sealing device inlet.

d2 = Uscita liquido dispositivo di tenuta.
Flushing sealing device outlet.

d3 = Entrata/Uscita liquido di raff. cassastoppa
Stuffing box cooling water outlet/inlet.

d4 = Scarico liquido di gocciolamento tenuta.
Seal drain.

d5 = Svuotamento olio lubrificante cuscinetti.
Bearing lubricating oil drain.

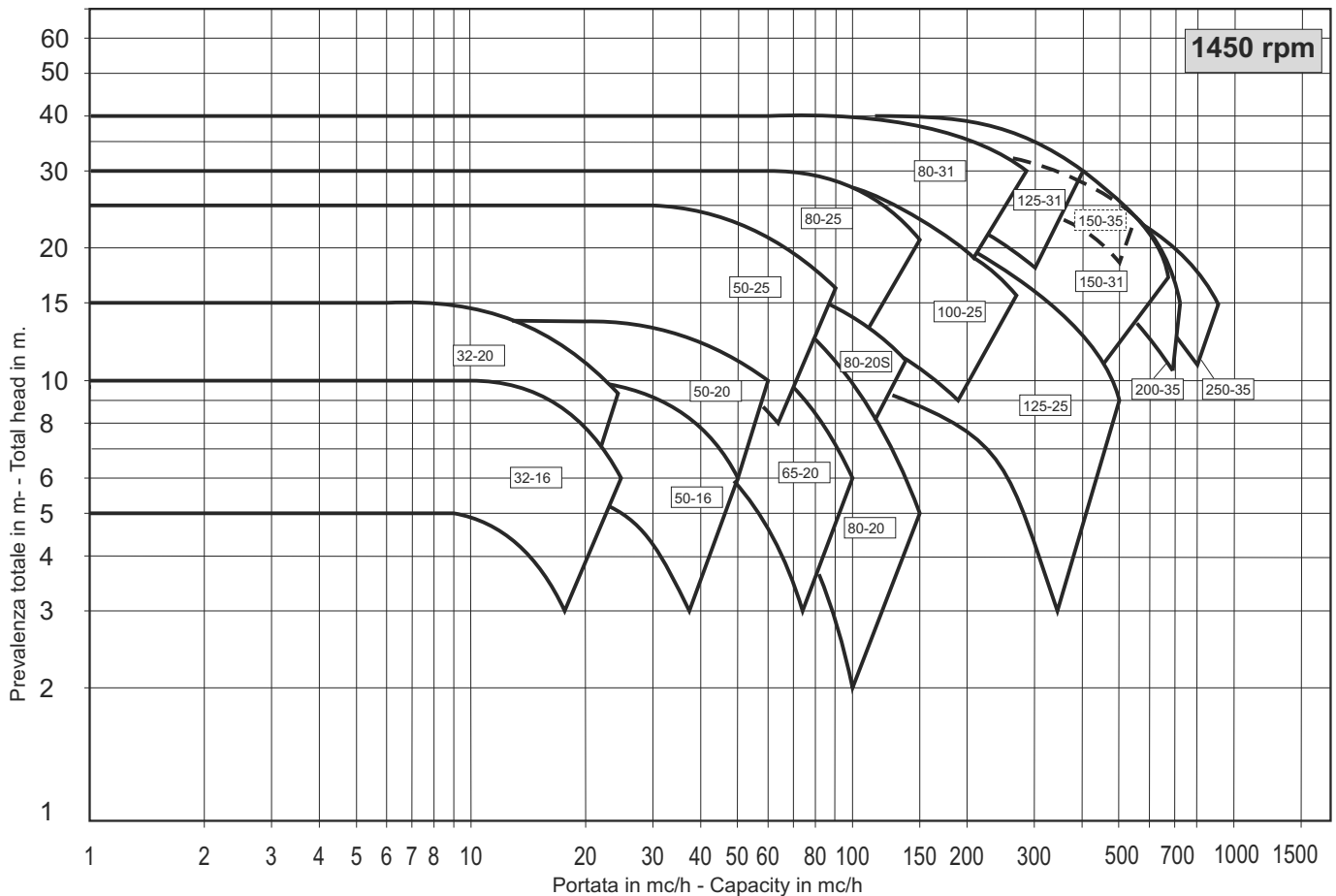
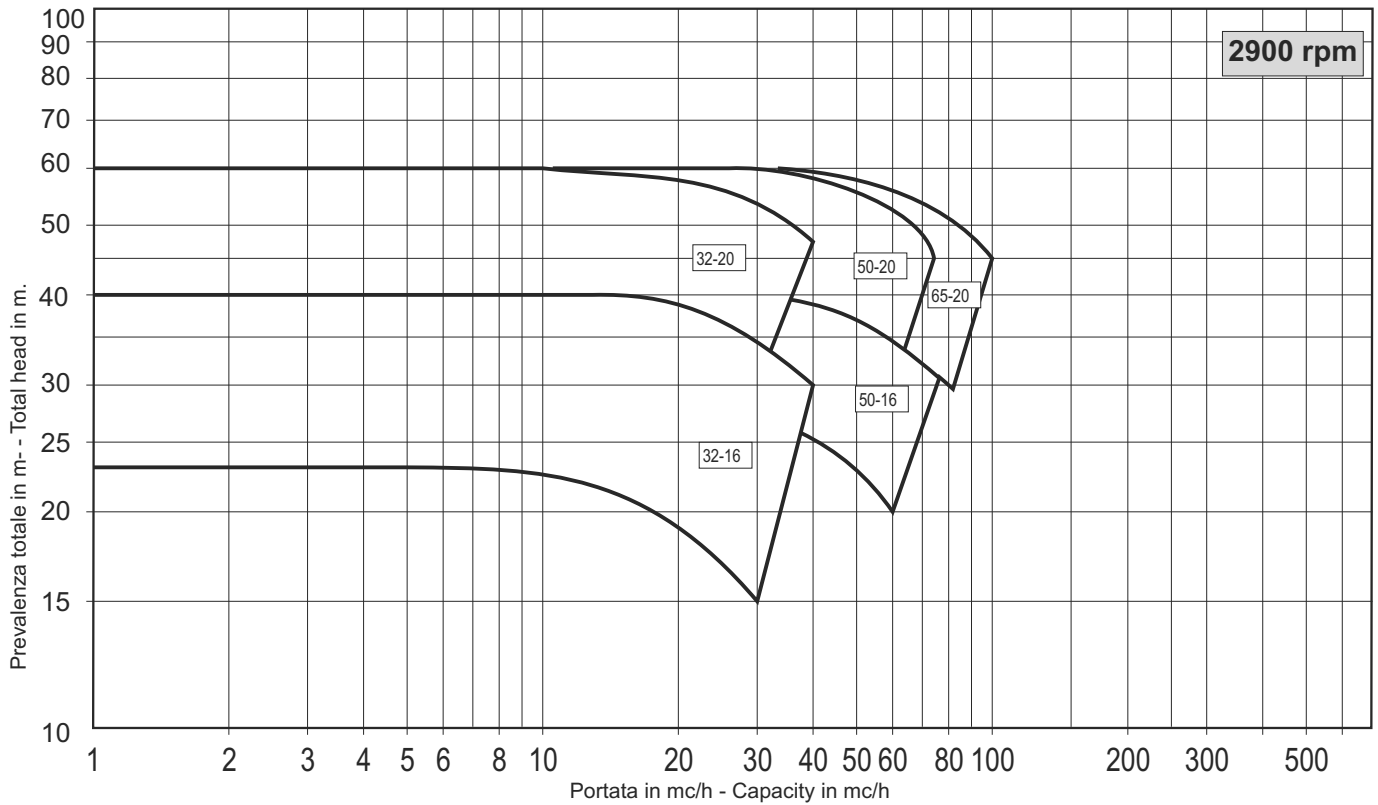
d6 = Attacco oliatore a livello costante.
Constant level oiler connection.

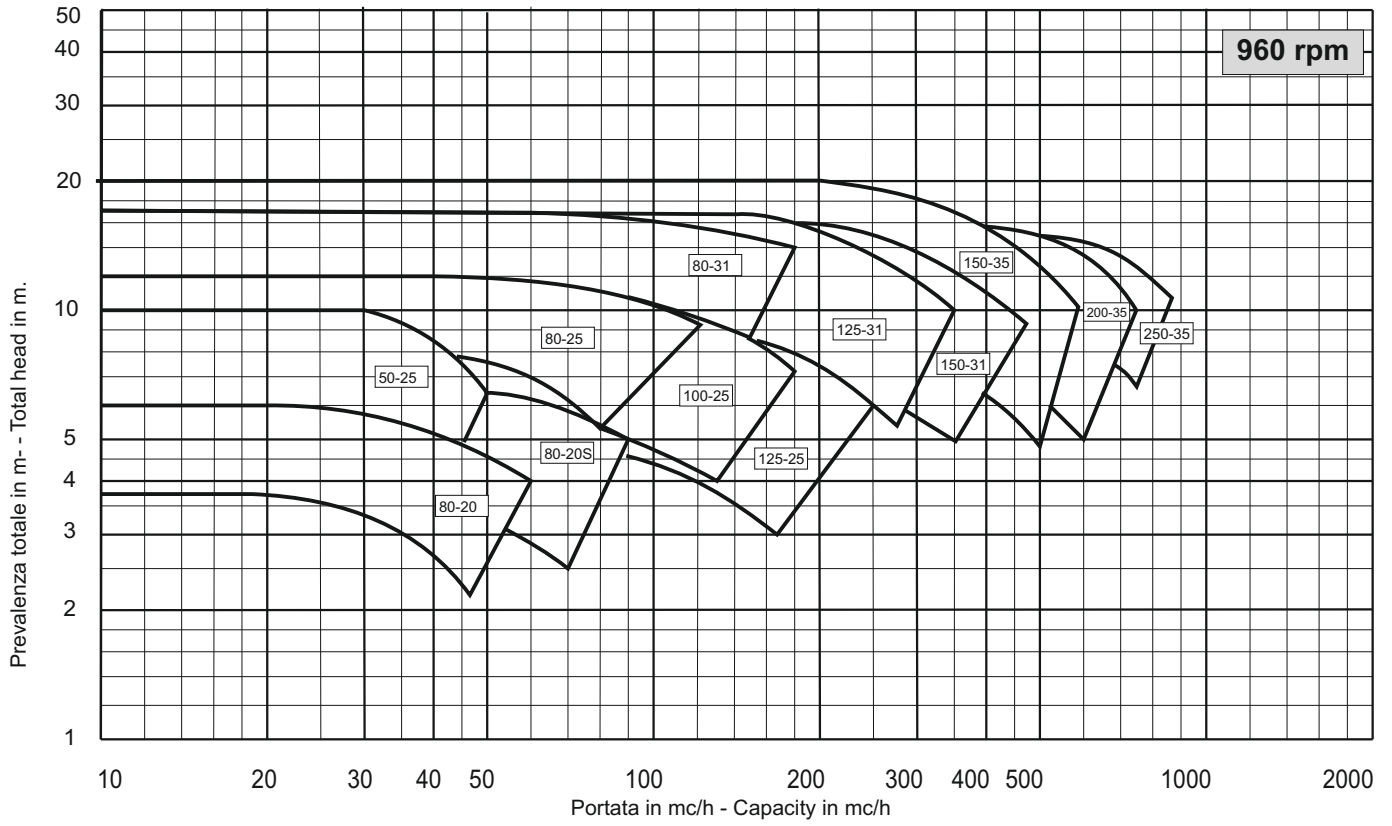
d7 = Tappo di sfiato con astina.
Oil dipstick.

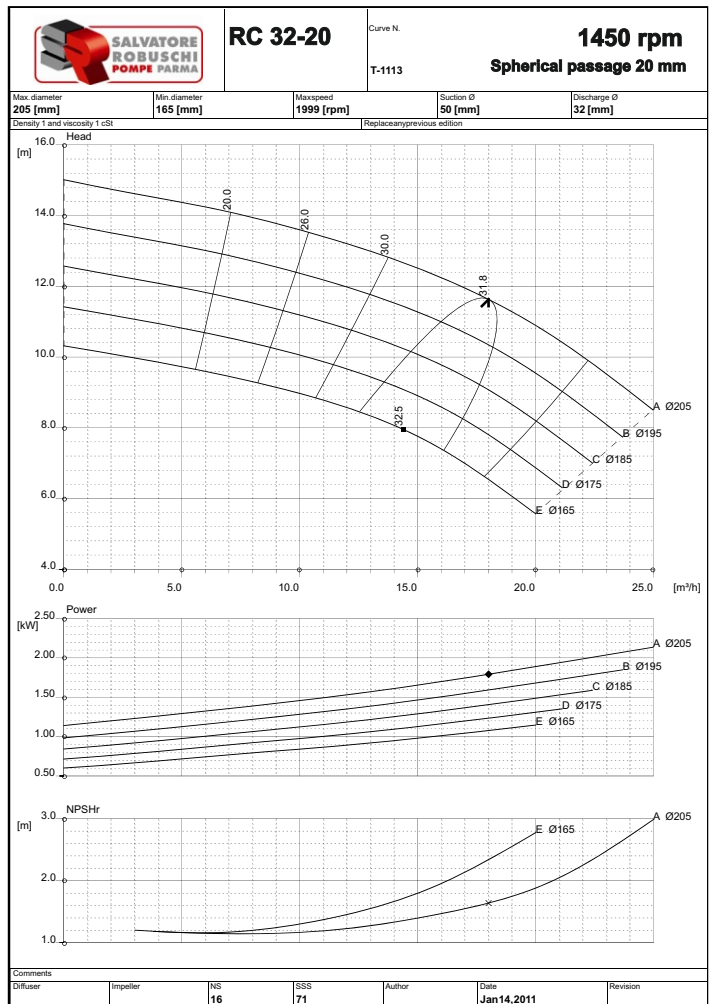
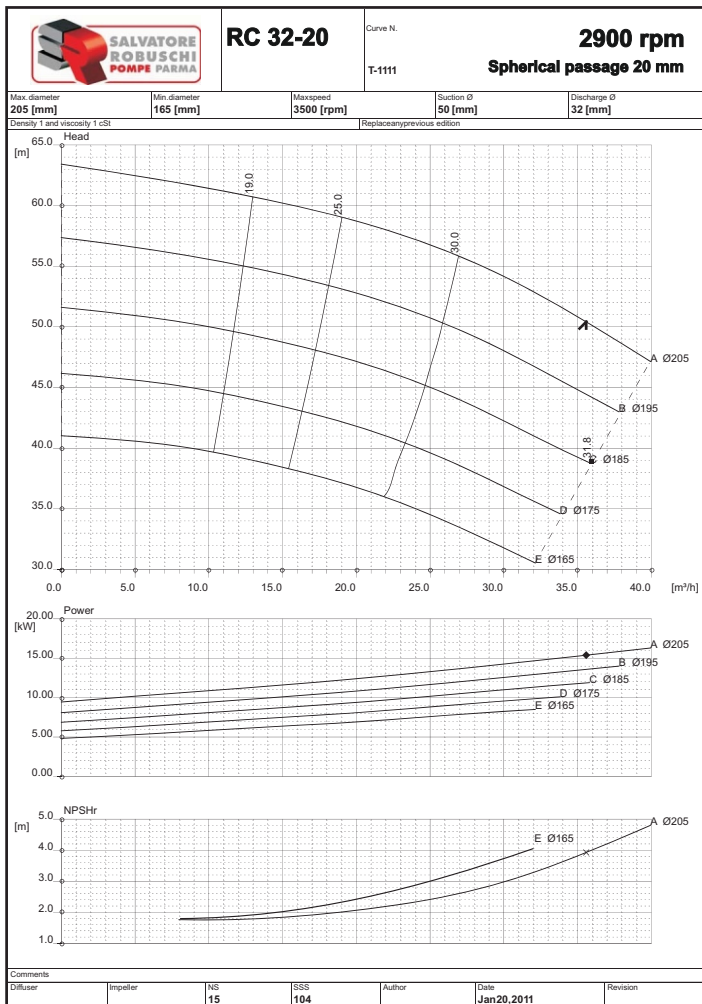
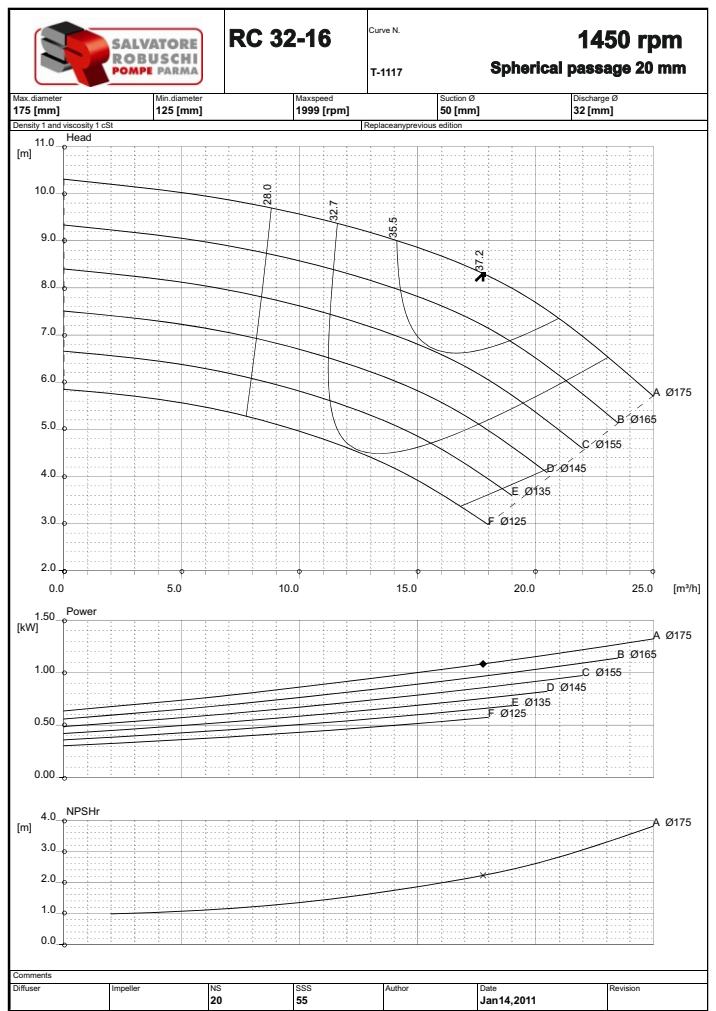
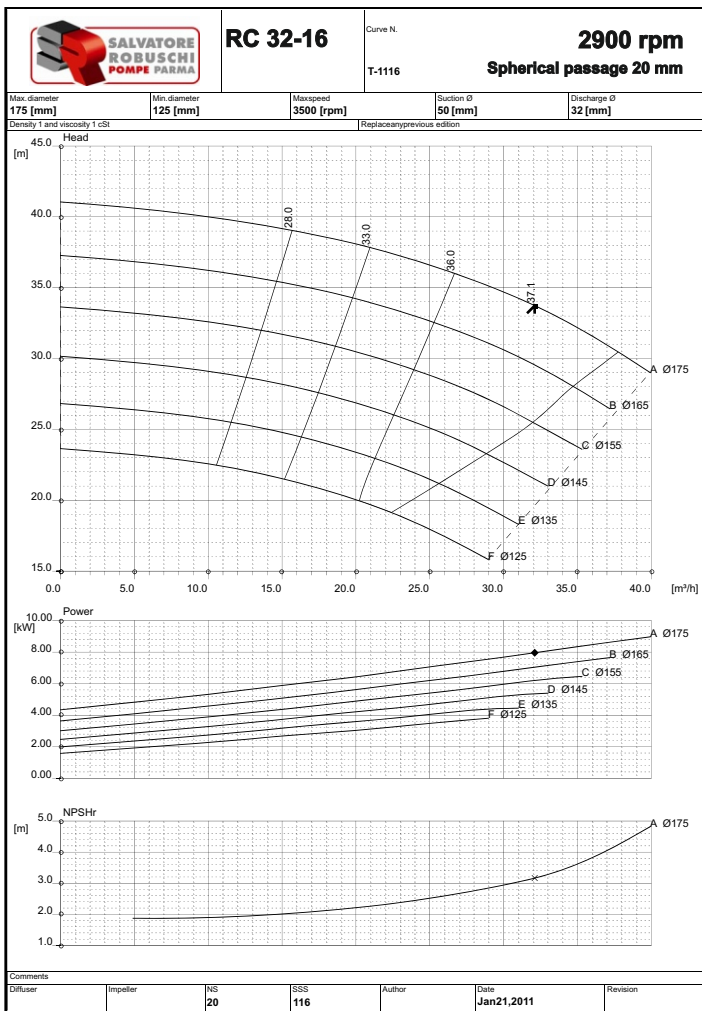
d8 = Attacco manometro.
Pressure gauge connection.

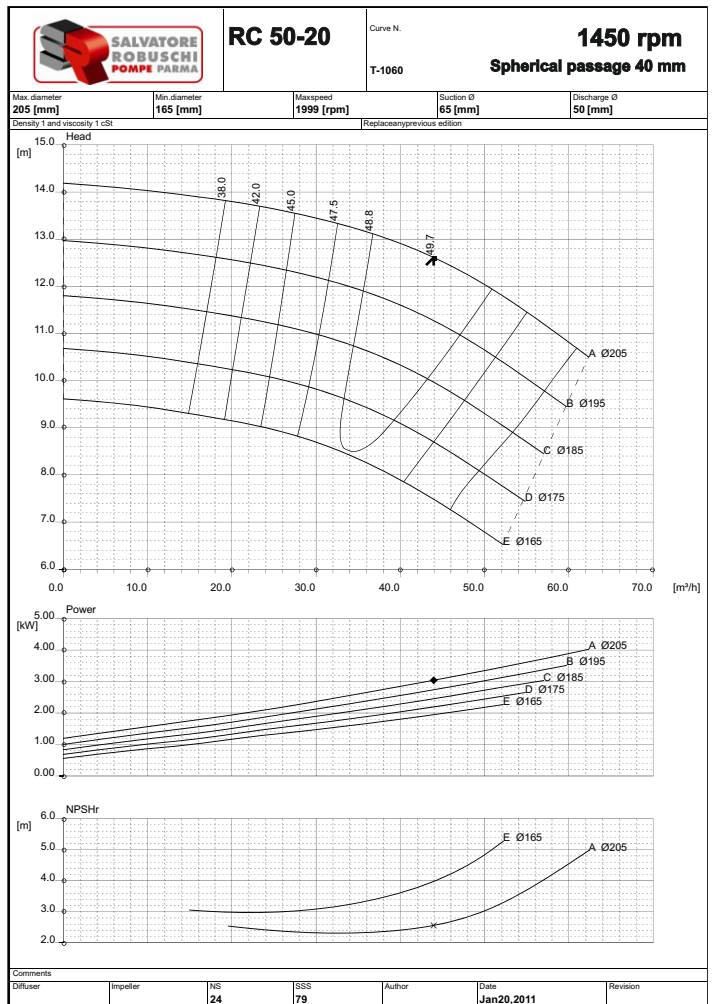
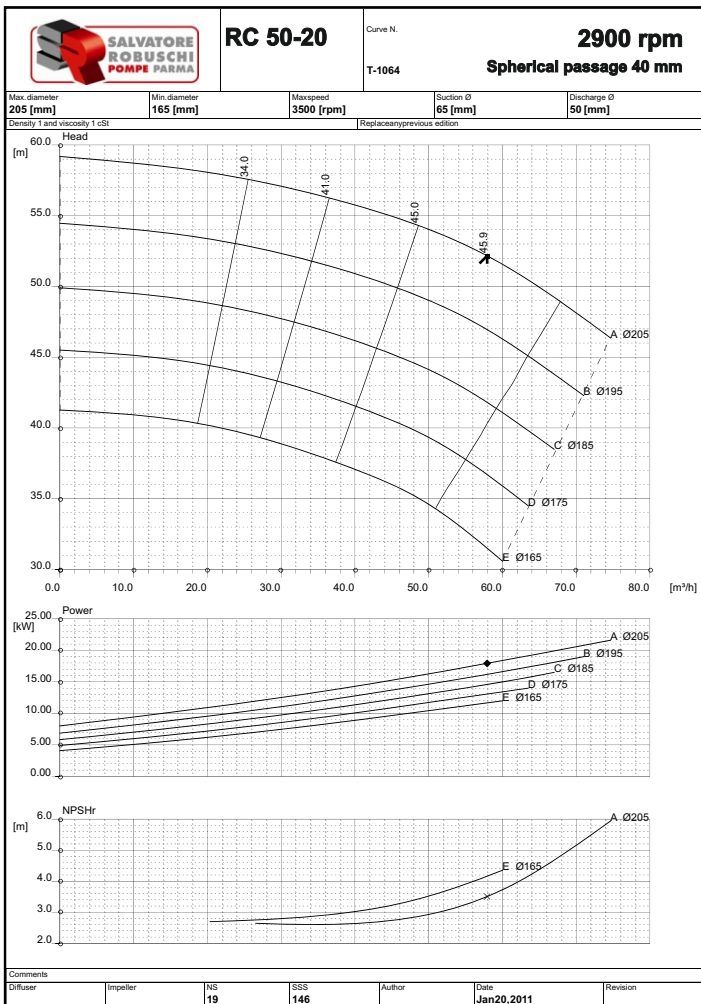
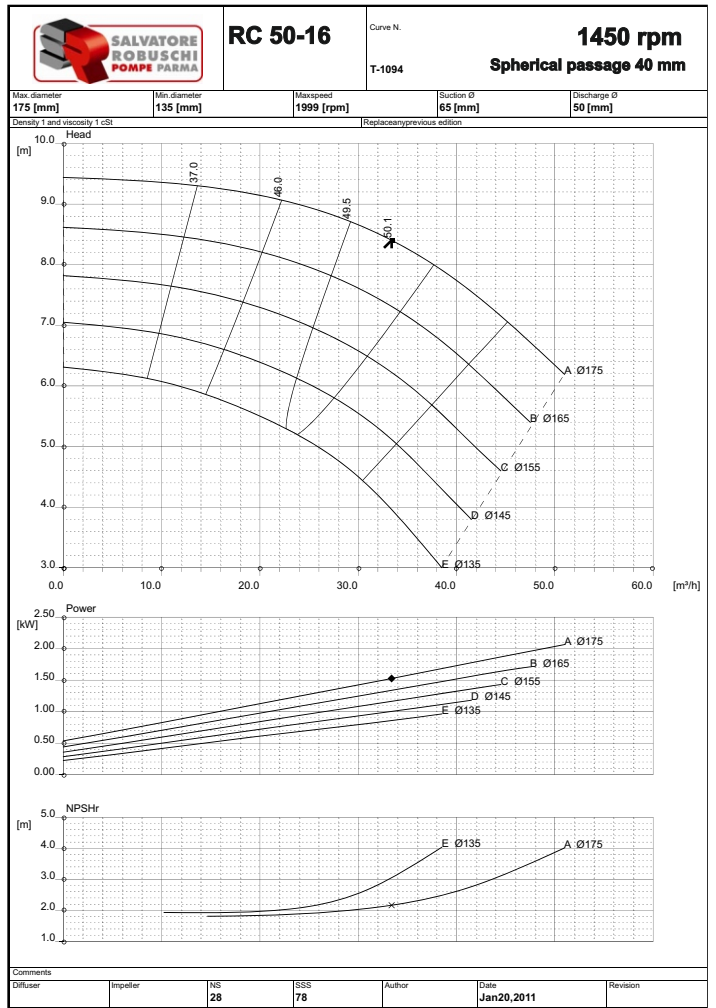
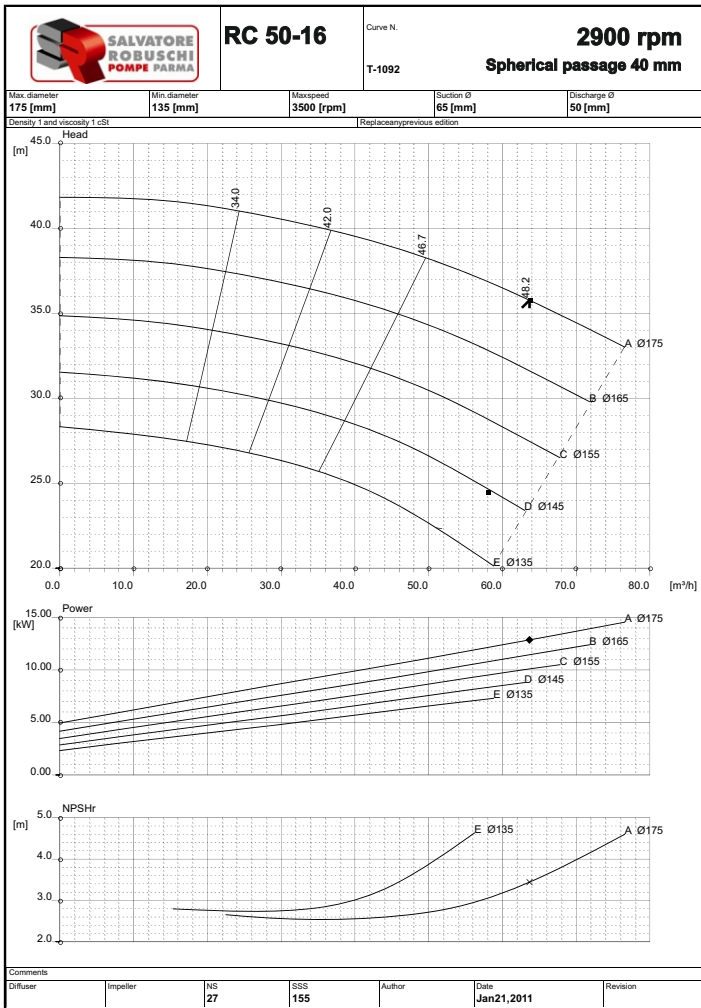
d9 = Scarico liquido.
Casing drain.

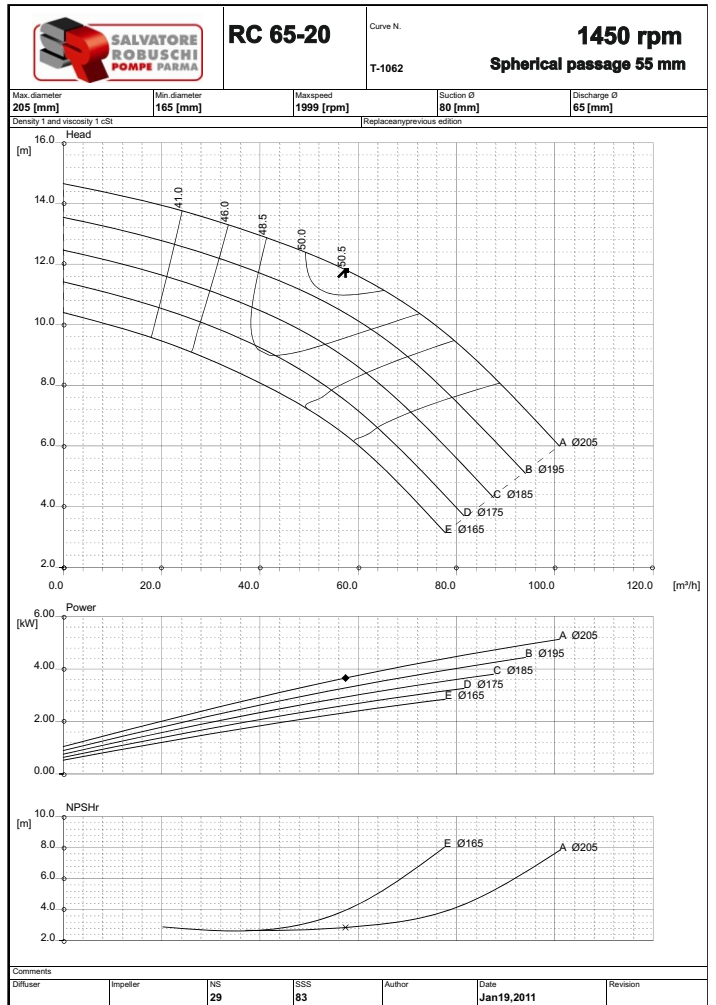
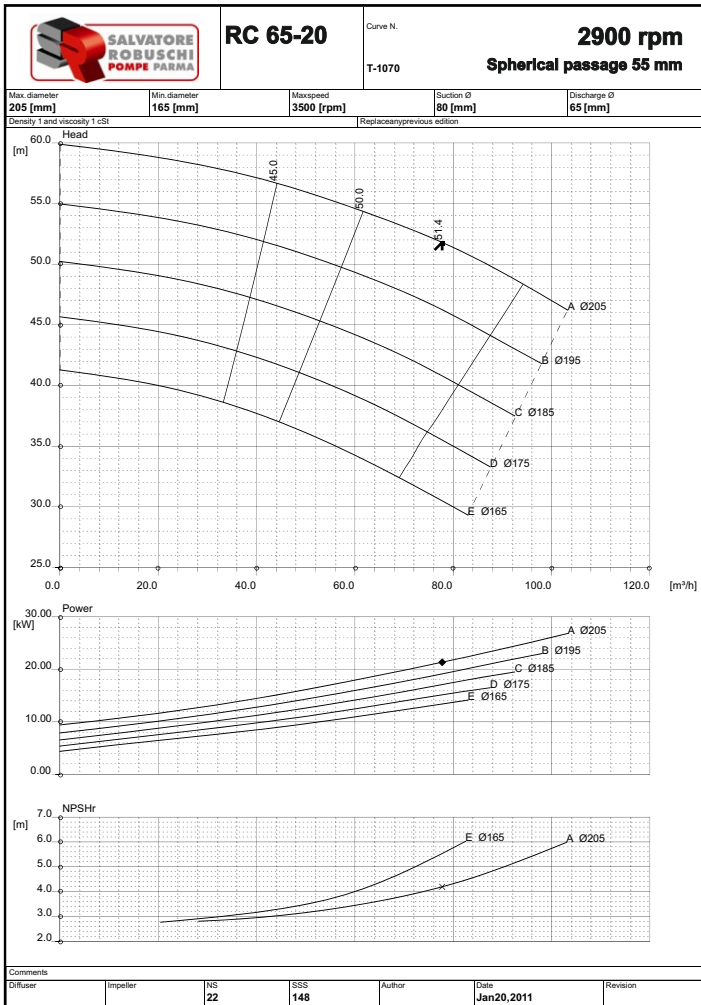
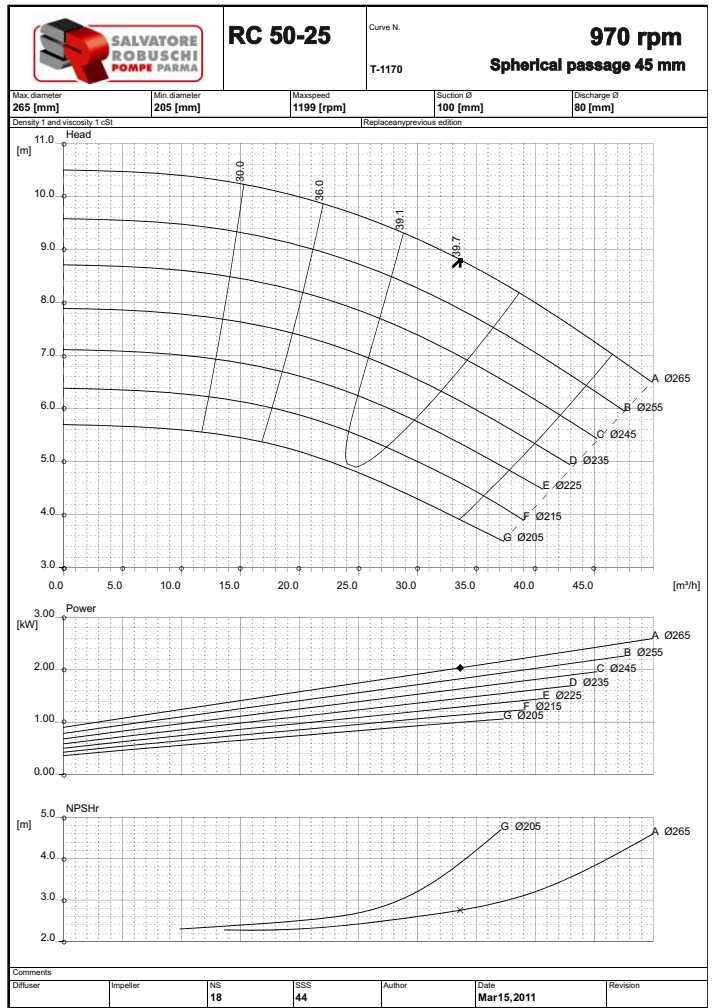
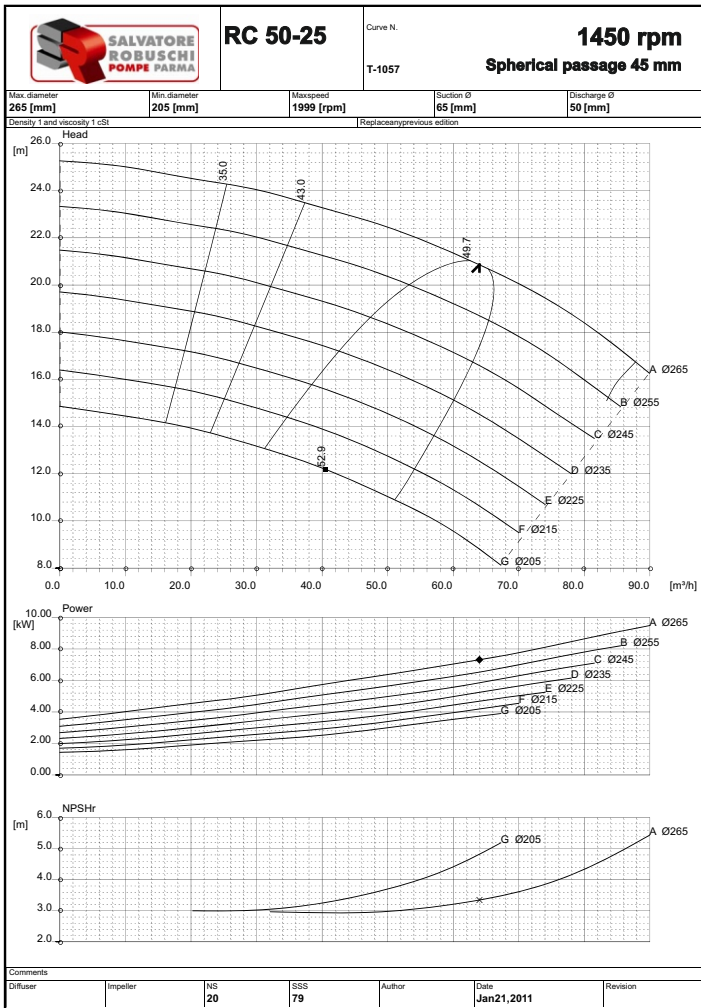
(*) = A Richiesta. On demand
Standard 150, 200, 250

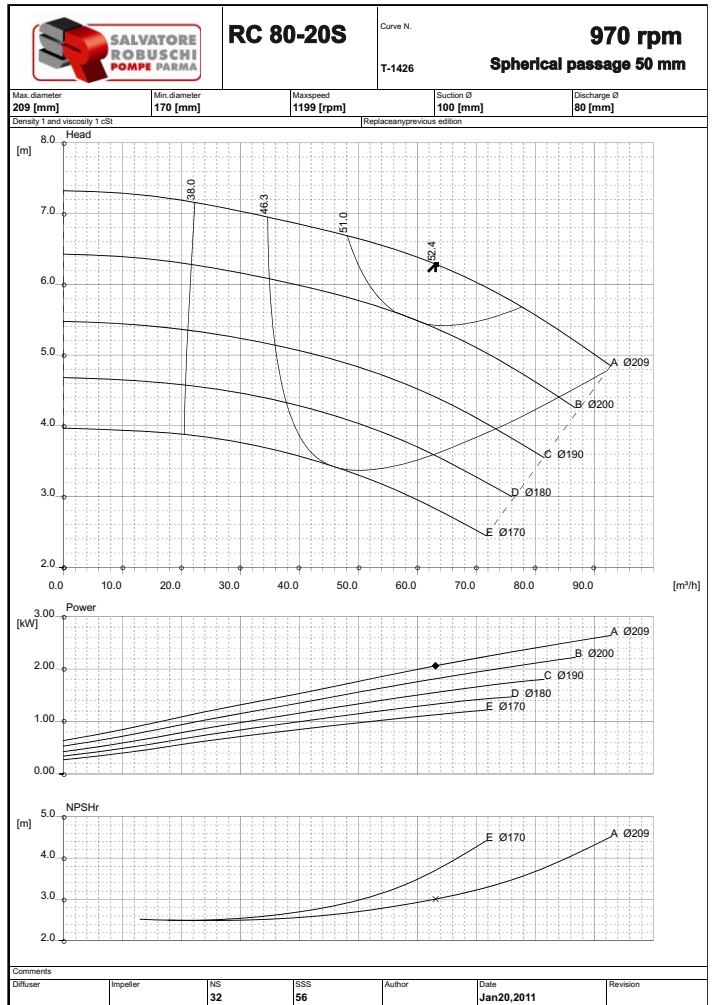
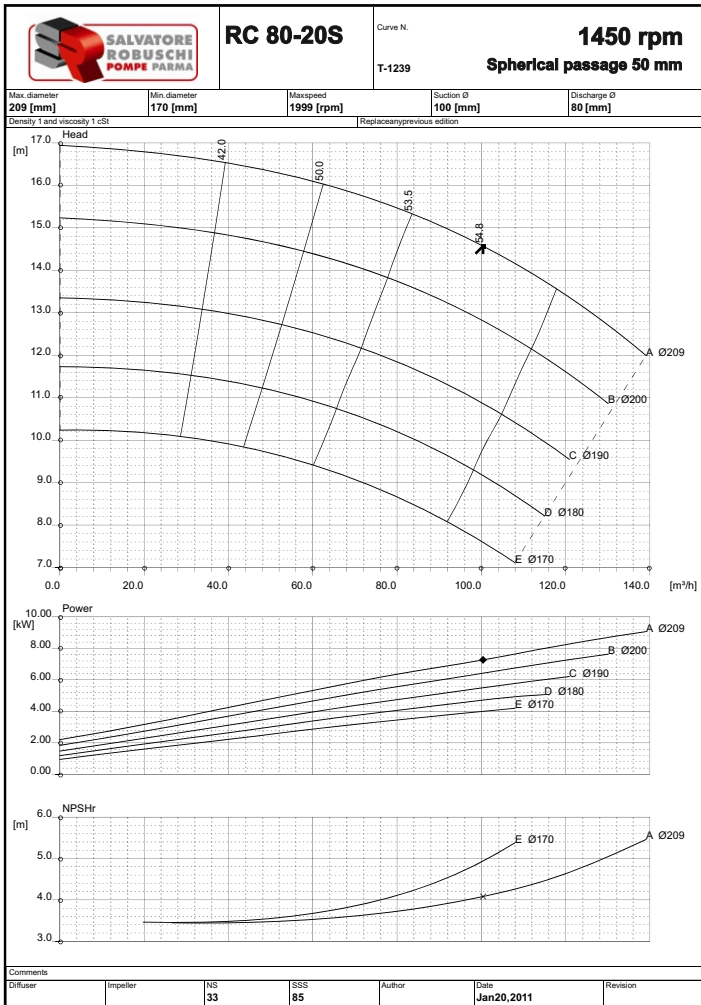
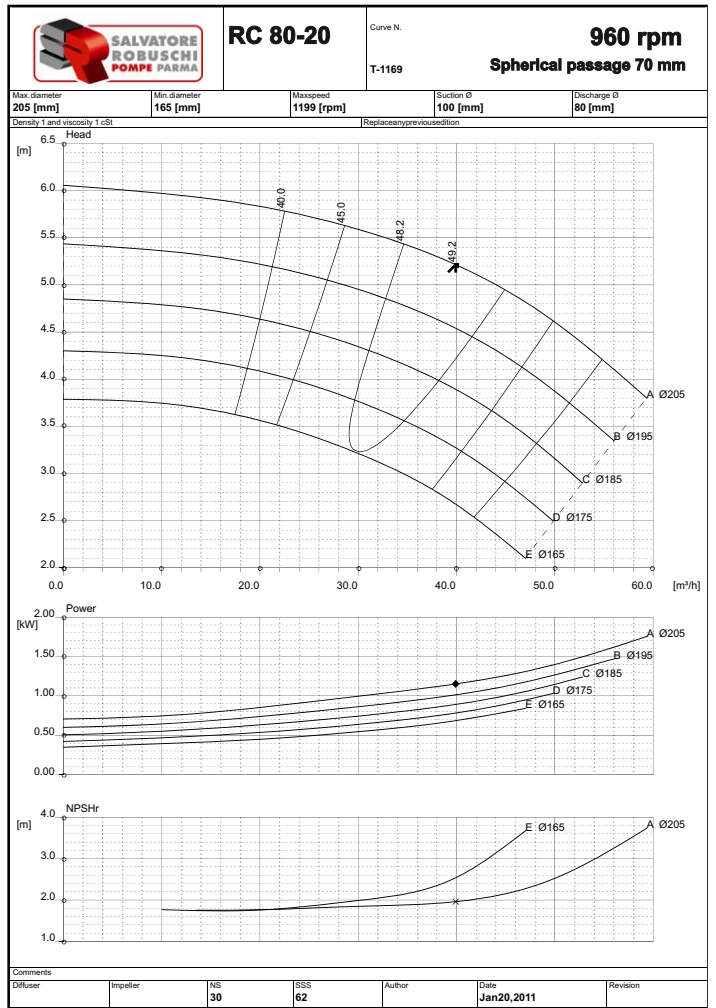
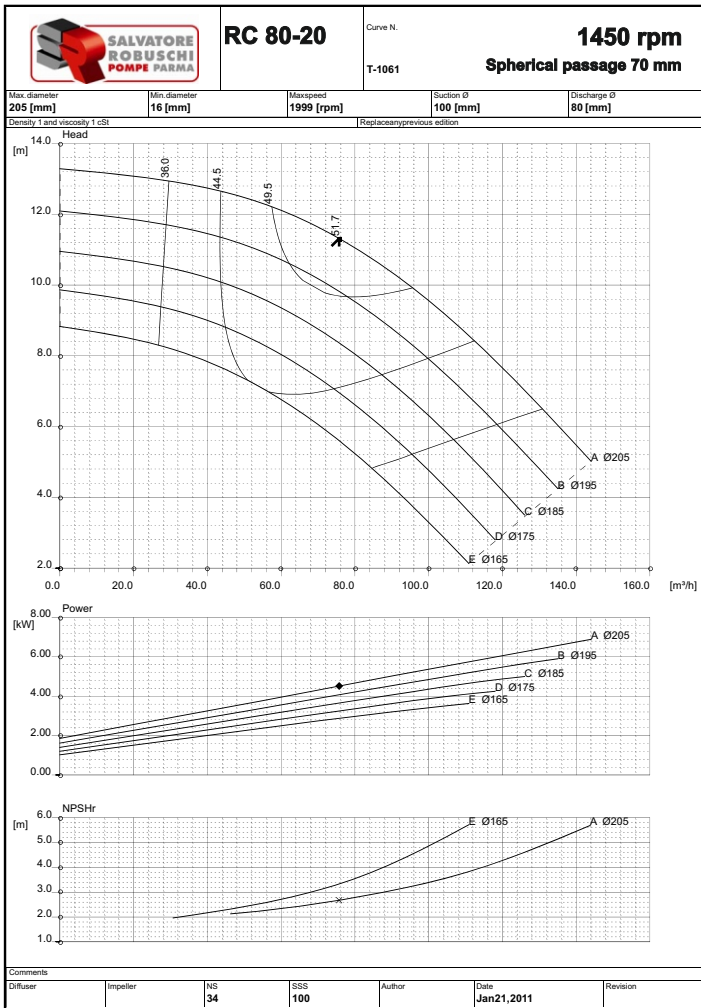


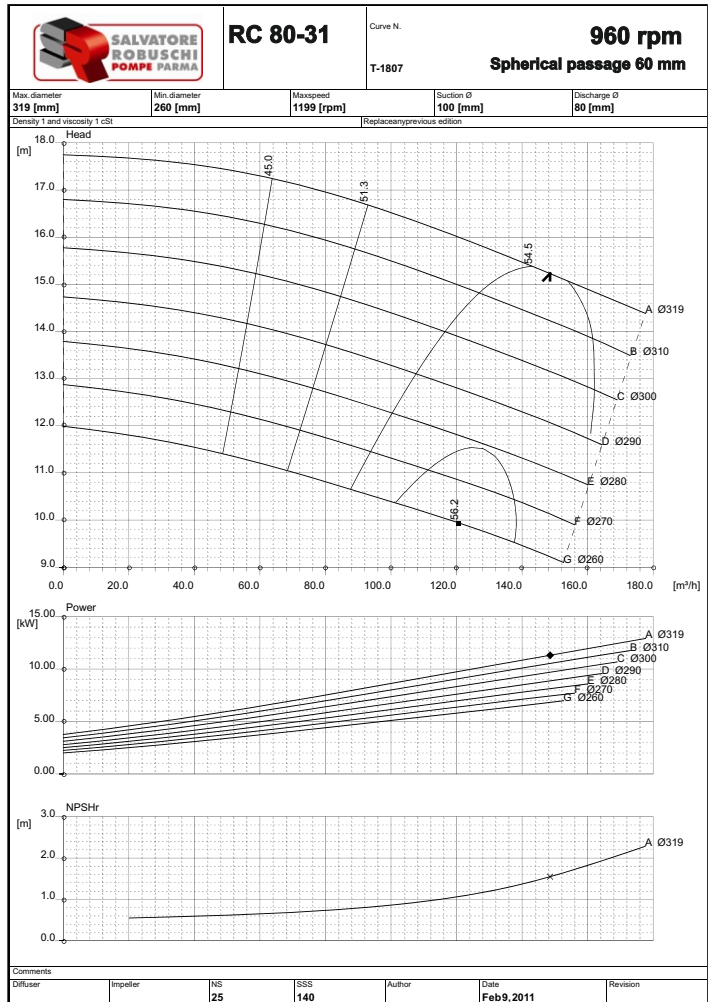
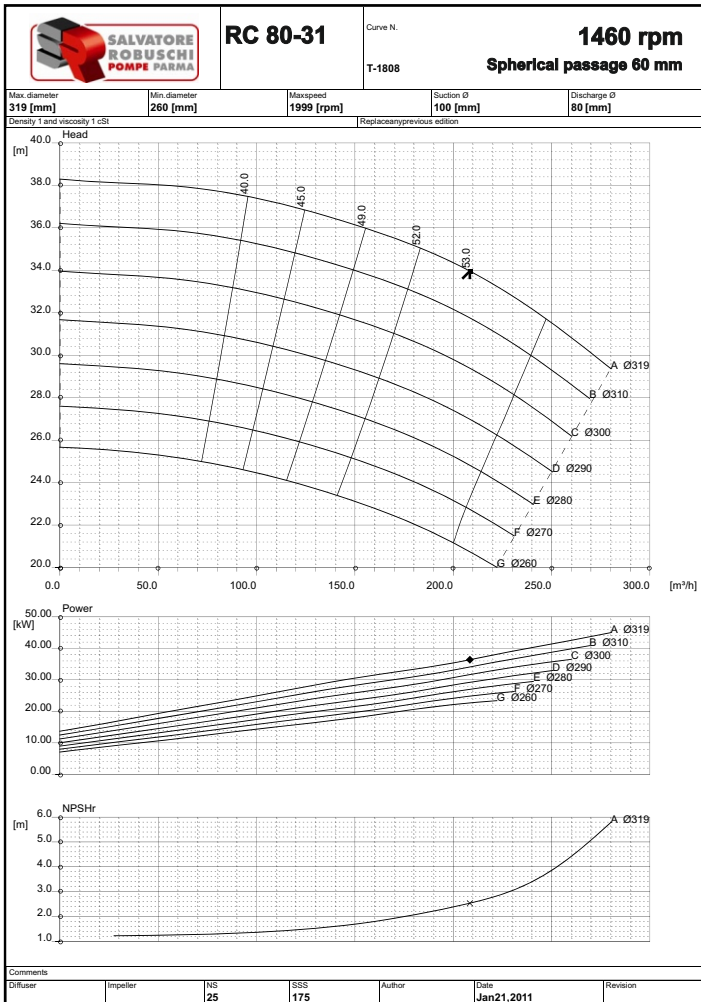
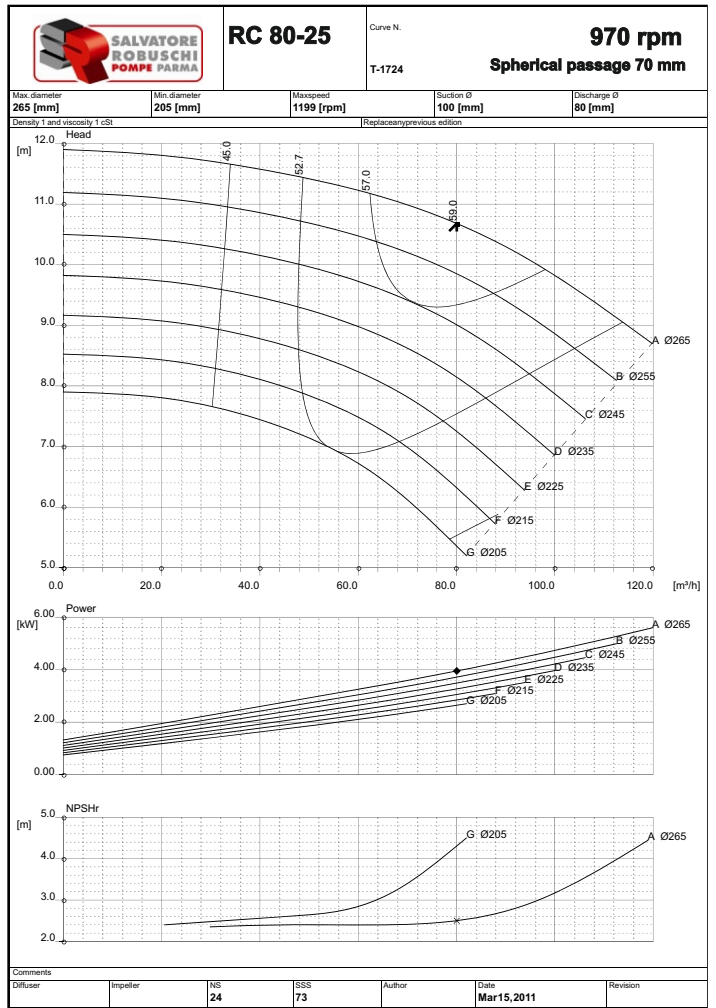
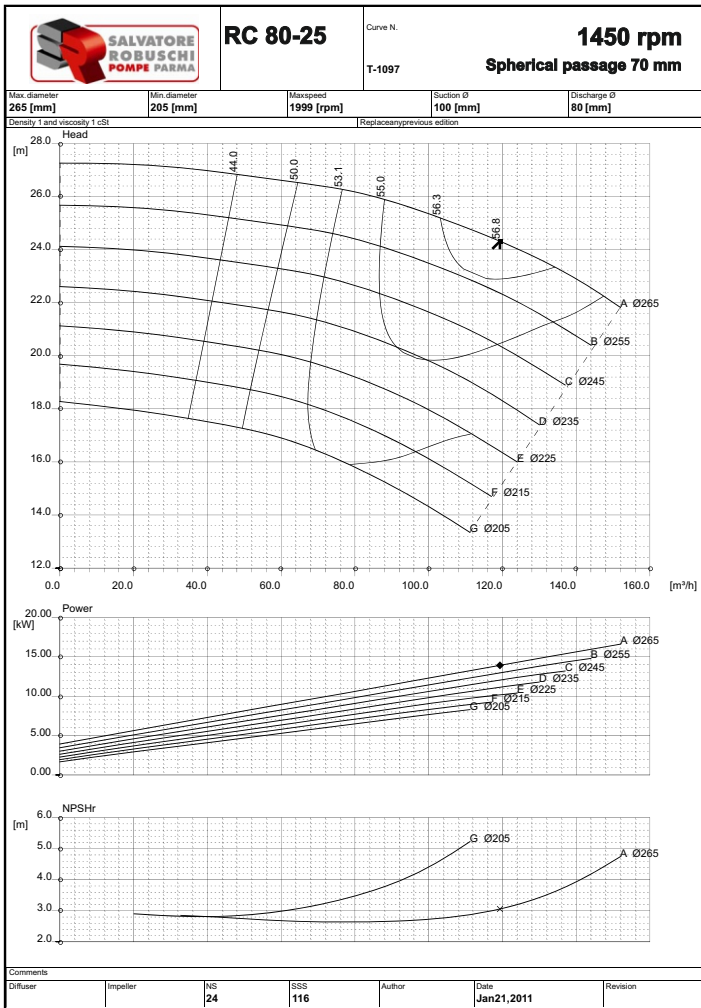


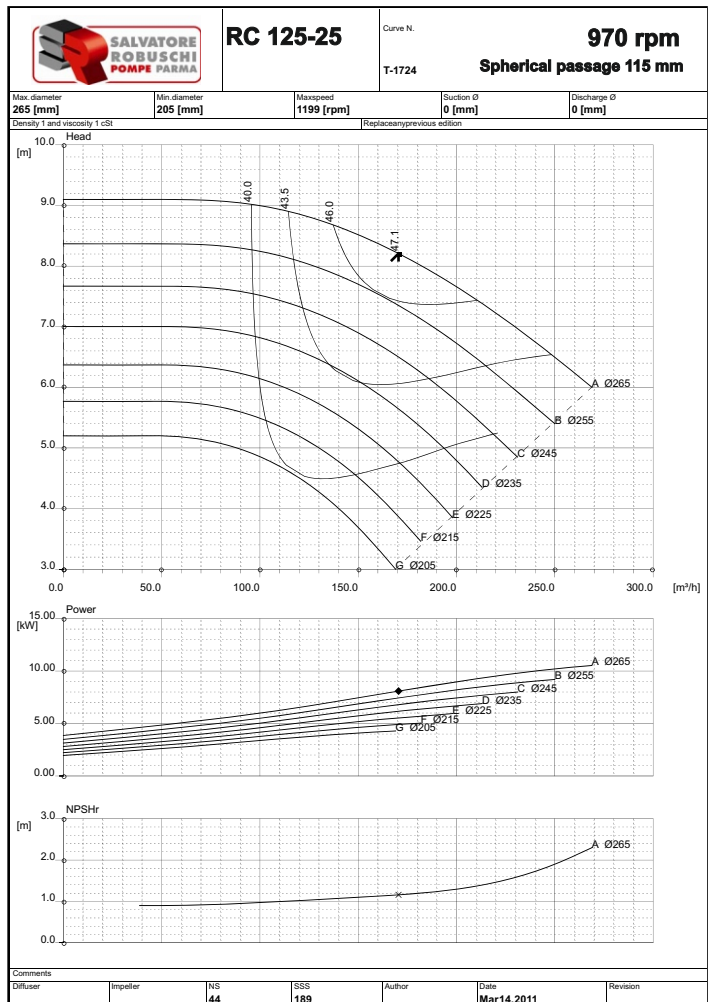
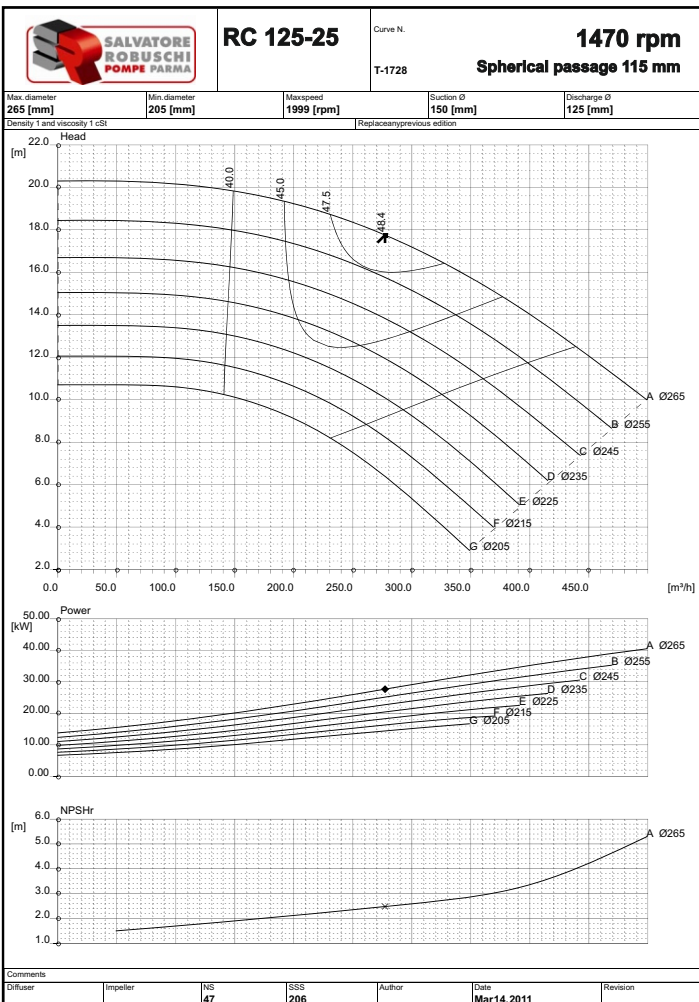
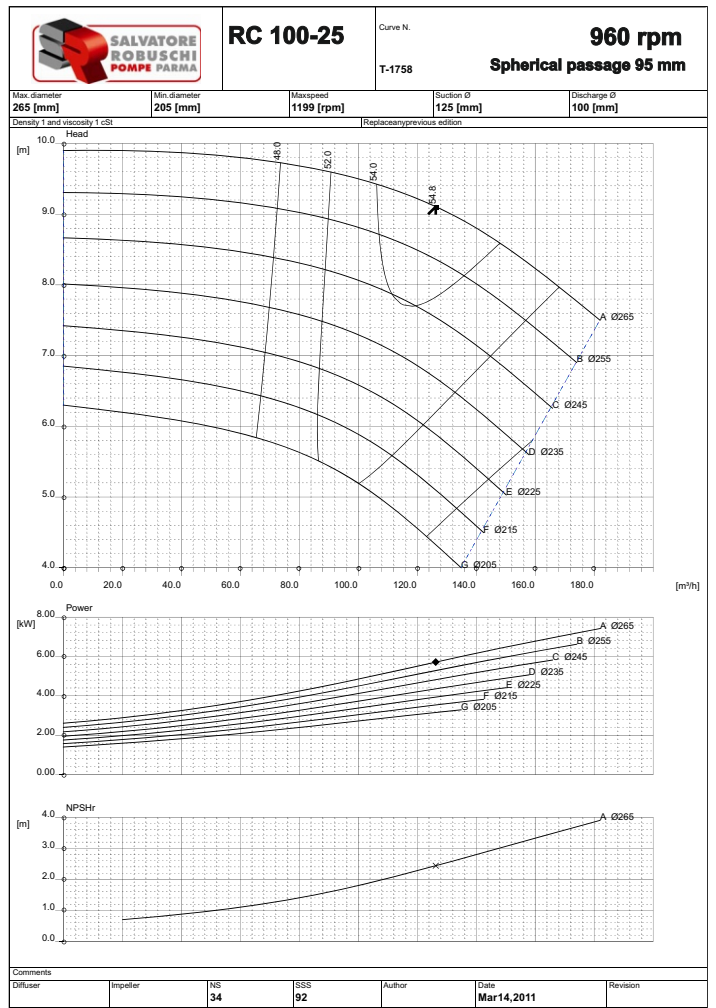
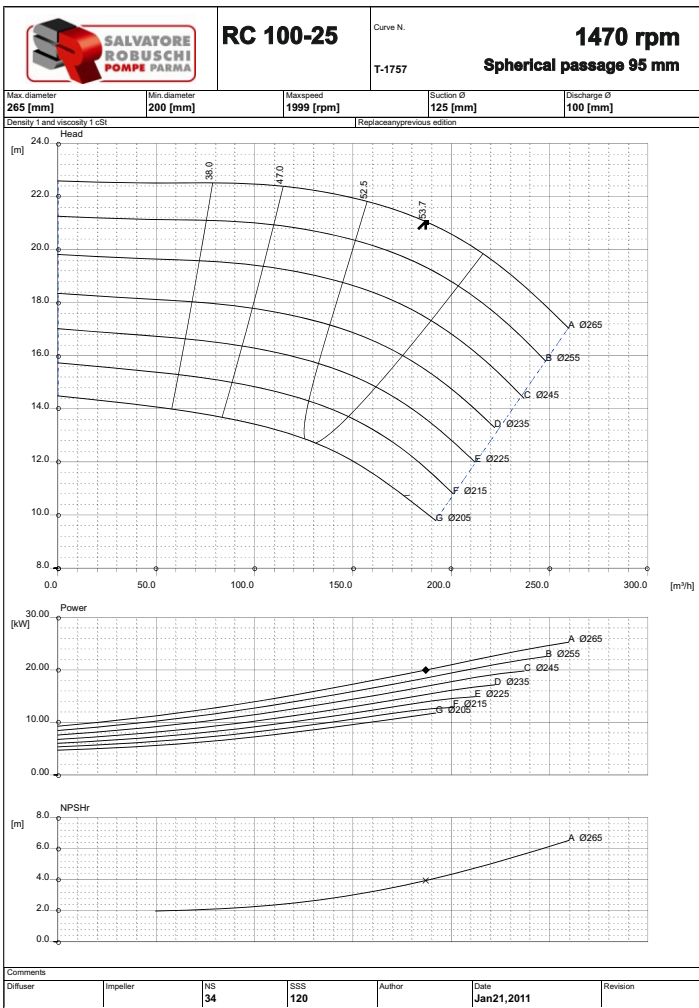


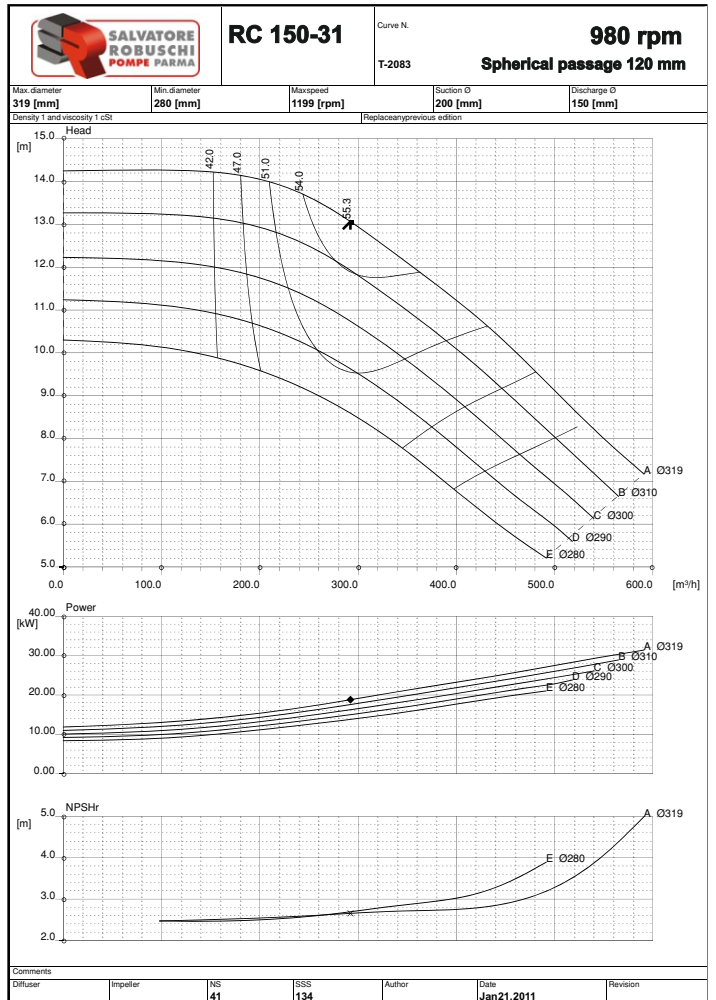
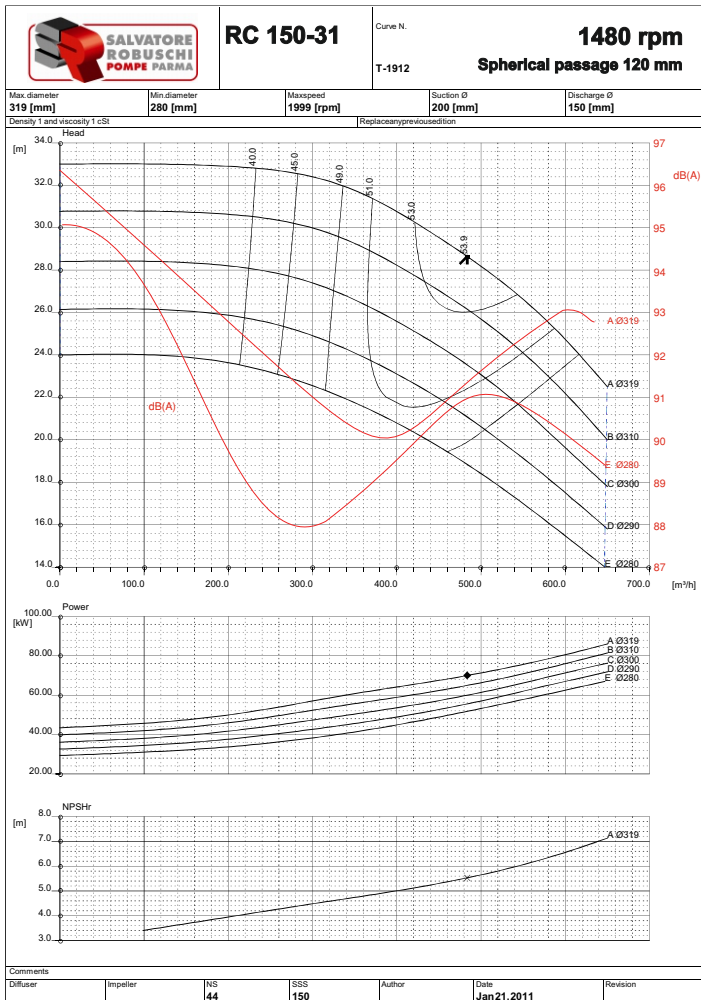
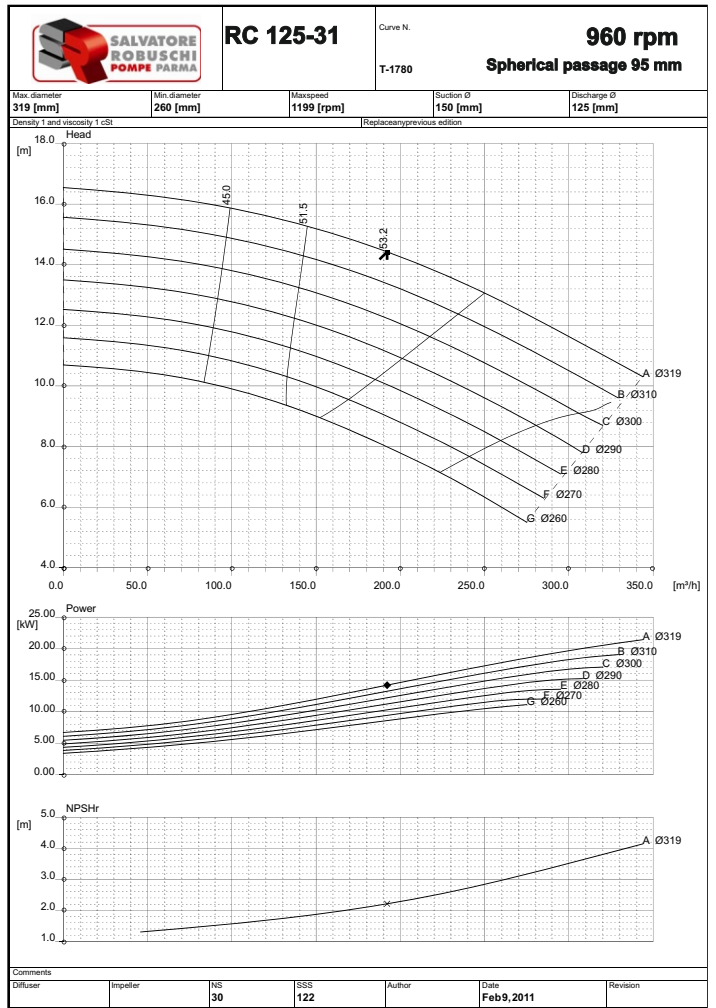
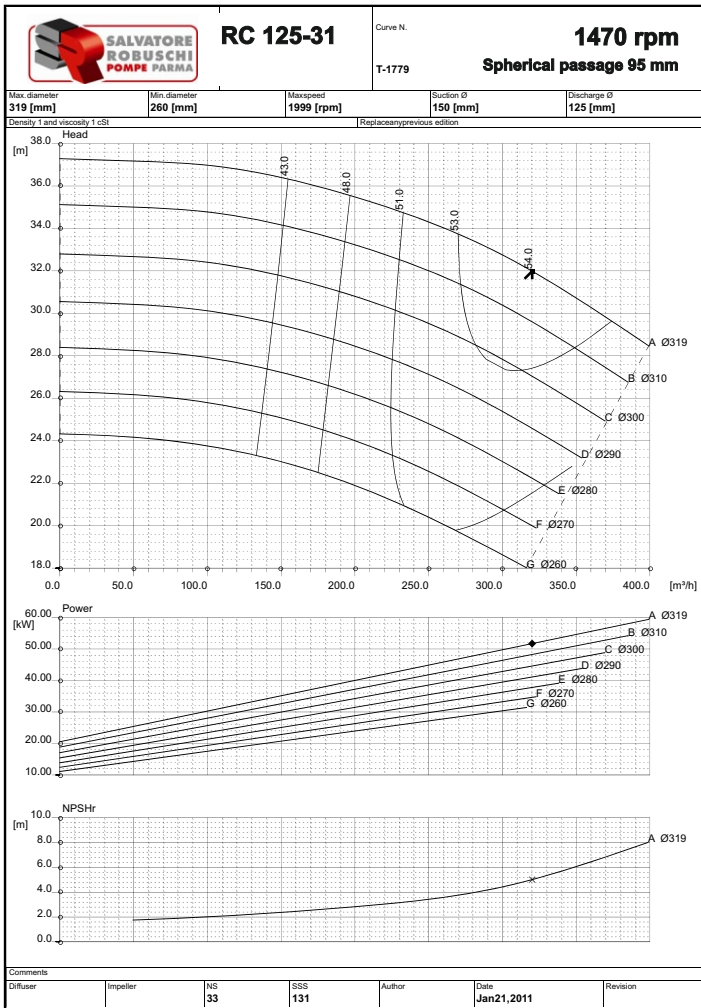


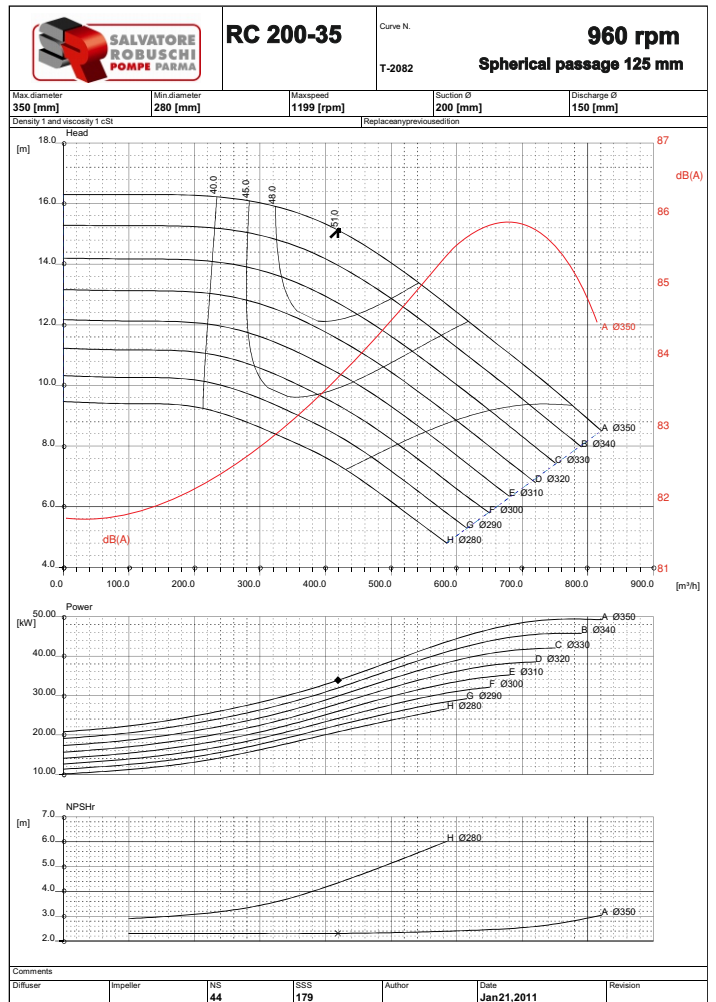
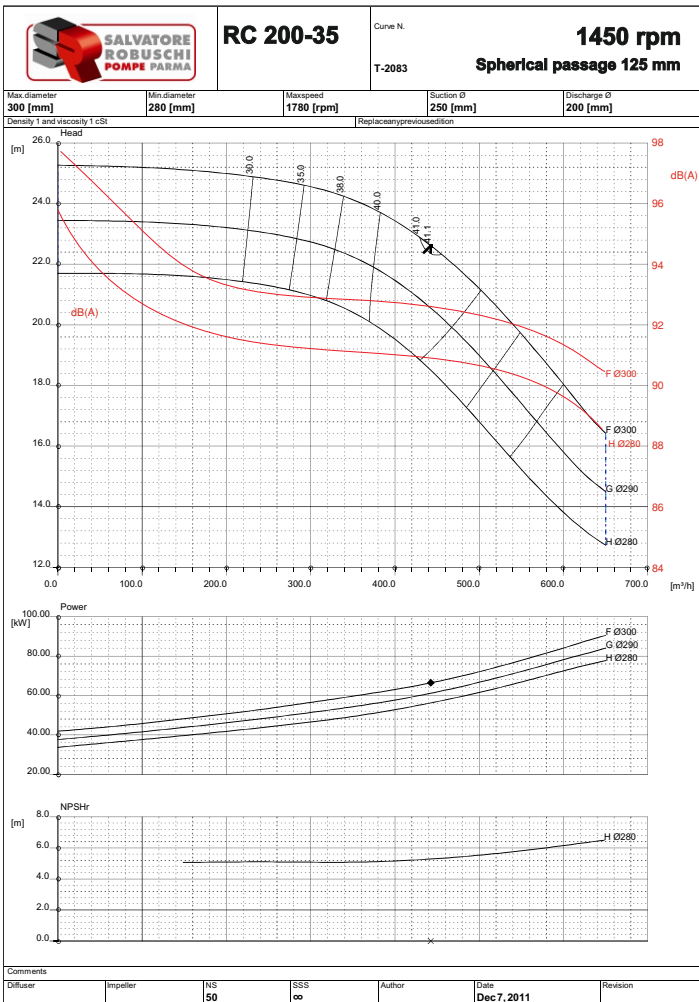
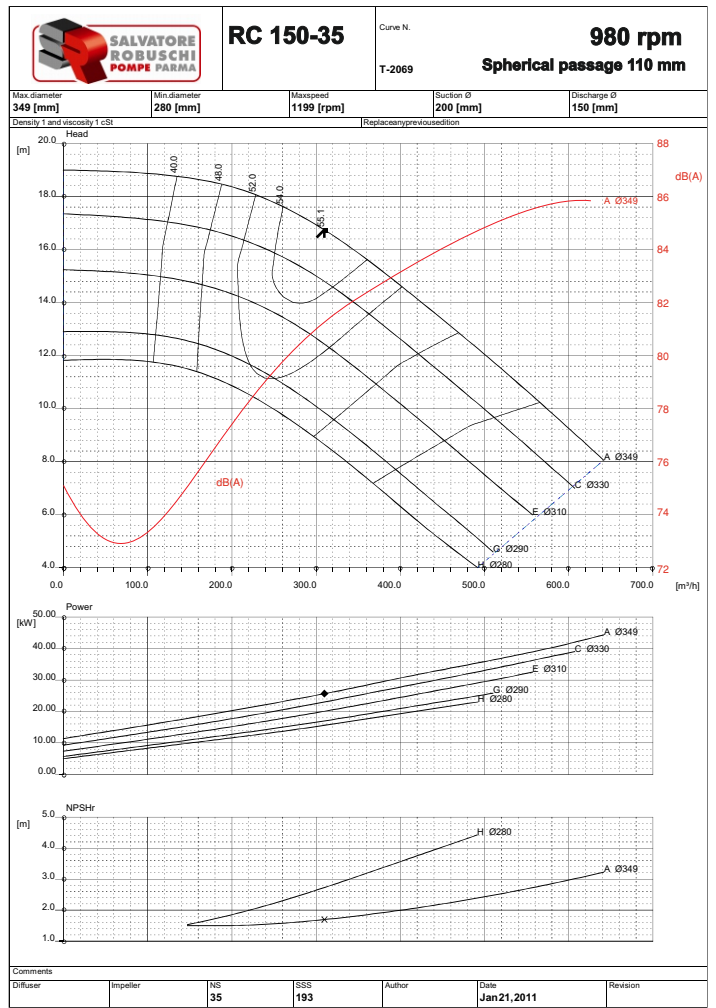
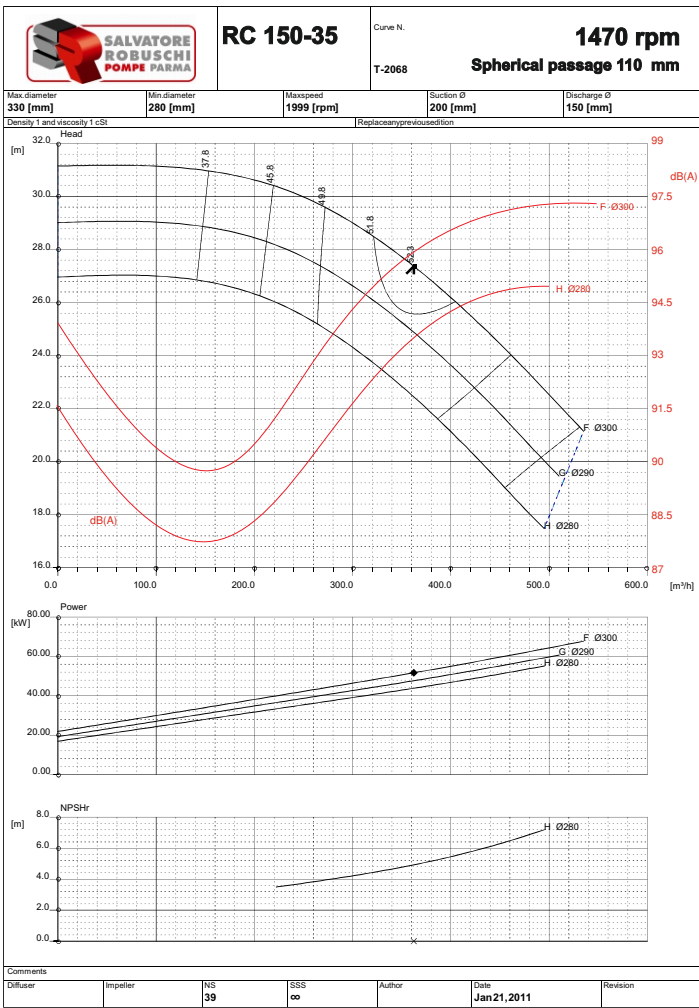














RC 250-35

Curve N.

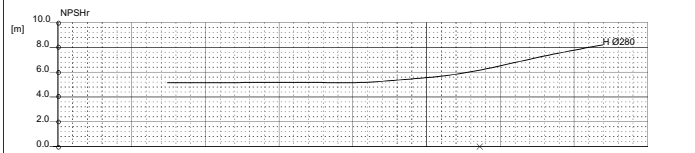
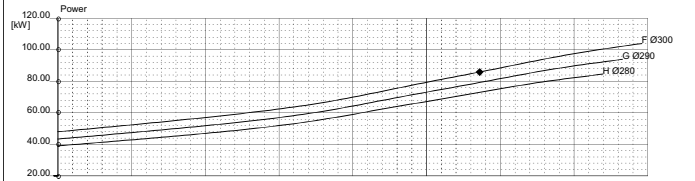
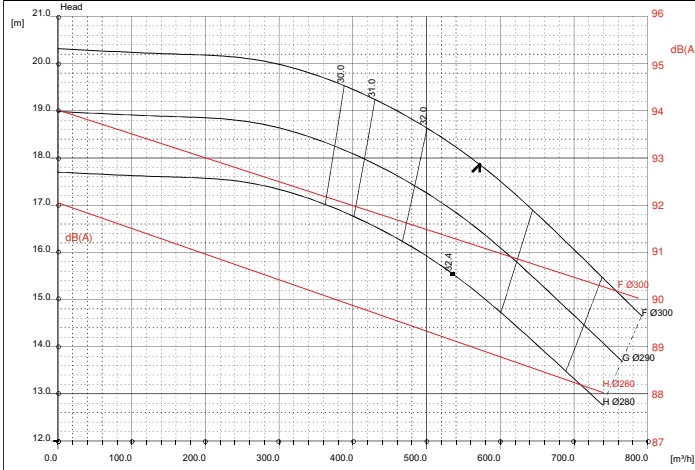
T-2086

1450 rpm

Spherical passage 150 mm

Max diameter	Min diameter	Max speed	Suction Ø	Discharge Ø
300 [mm]	280 [mm]	1780 [rpm]	300 [mm]	250 [mm]

Density 1 and viscosity 1 cSt | Replace any previous condition



Comments	Diffuser	Impeller	NS	SSS	Author	Date	Revision
			68	∞		Dec 12, 2011	



RC 250-35

Curve N.

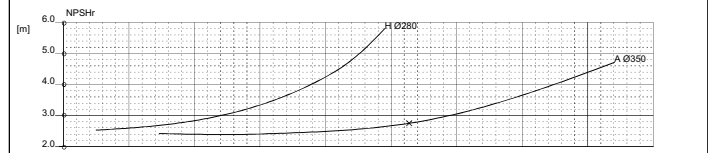
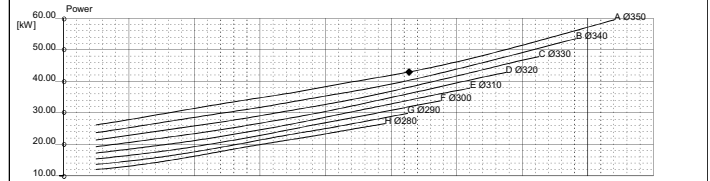
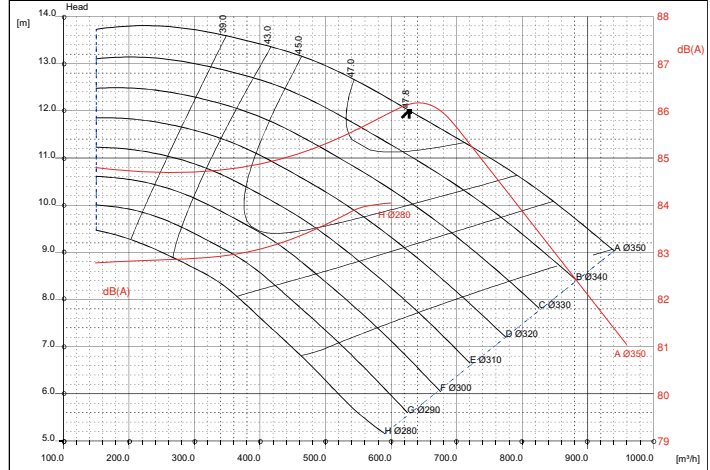
T-2085

980 rpm

Spherical passage 150 mm

Max diameter	Min diameter	Max speed	Suction Ø	Discharge Ø
350 [mm]	280 [mm]	1199 [rpm]	300 [mm]	250 [mm]

Density 1 and viscosity 1 cSt | Replace any previous condition



Comments	Diffuser	Impeller	NS	SSS	Author	Date	Revision
			63	192		Dec 7, 2011	